

EGFR Antibody
Rabbit Anti-Human EGFR Polyclonal
Catalog # ASM10621

Specification

EGFR Antibody - Product Information

Application	WB
Primary Accession	P00533
Other Accession	NP_005219.2
Host	Rabbit
Clonality	Polyclonal
Format	EGFR
Target/Specificity	
EGFR	

Other Names

Cell growth inhibiting protein 40 Antibody, Avian erythroblastic leukemia viral (v erb b) oncogene homolog Antibody, Urogastrone Antibody, EGFR Antibody, Receptor tyrosine-protein kinase erbB-1 Antibody, v-erb-b Avian erythroblastic leukemia viral oncogen homolog Antibody, Epidermal growth factor receptor (erythroblastic leukemia viral (v erb b) oncogene homolog avian) Antibody, Errp Antibody, PIG61 Antibody, erb-b2 receptor tyrosine kinase 1 Antibody, ERBB Antibody, mENA Antibody, Epidermal growth factor receptor (avian erythroblastic leukemia viral (v erb b) oncogene homolog) Antibody, ERBB1 Antibody, EGFR_HUMAN Antibody, SA7 Antibody, Proto-oncogene c-ErbB-1 Antibody, wa2 Antibody, Oncogen ERBB Antibody, Epidermal growth factor receptor Antibody, EGF R Antibody, Receptor tyrosine-protein kinase ErbB-1 Antibody, EC:2.7.10.1 Antibody, Cell proliferation inducing protein 61 Antibody, NISBD2 Antibody, Receptor tyrosine protein kinase ErbB 1 Antibody, HER1 Antibody, Wa5 Antibody, Species antigen 7 Antibody

Immunogen

Synthetic peptide from the mid-protein of Human EGFR (aa. 200-300)

Purification

Peptide Affinity Purified

Storage **-20°C**

Storage Buffer

PBS pH 7.4, 50% glycerol, 0.09% sodium azide *Storage buffer may change when conjugated

Shipping Temperature

Blue Ice or 4°C

Cellular Localization

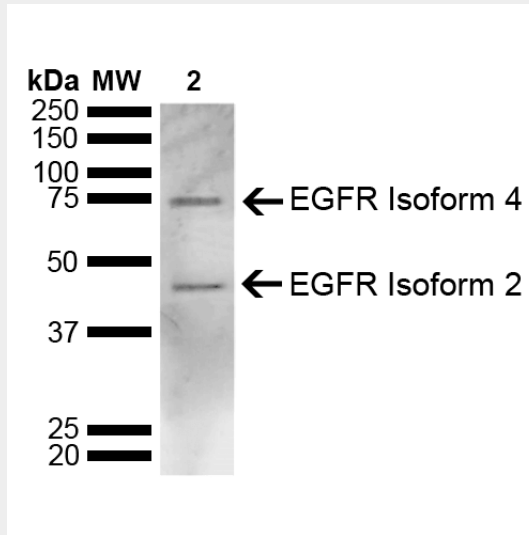
Cell Membrane | Single-Pass Type I Membrane Protein | Endoplasmic Reticulum Membrane | Single-Pass Type I Membrane Protein | Golgi Apparatus Membrane | Single-Pass Type I Membrane Protein | Nucleus Membrane | Single-Pass Type I Membrane Protein | Endosome | Endosome Membrane | Nucleus

EGFR Antibody - Protocols

Provided below are standard protocols that you may find useful for product applications.

- [Western Blot](#)
- [Blocking Peptides](#)
- [Dot Blot](#)
- [Immunohistochemistry](#)
- [Immunofluorescence](#)
- [Immunoprecipitation](#)
- [Flow Cytometry](#)
- [Cell Culture](#)

EGFR Antibody - Images



Western blot analysis of Human Cervical cancer cell line (HeLa) lysate showing detection of ~134.3 kDa EGFR protein using Rabbit Anti-EGFR Polyclonal Antibody (SPC-772). Lane 1: Molecular Weight Ladder (MW). Lane 2: HeLa. Load: 10 μ g. Block: 5% Skim Milk in 1X TBST. Primary Antibody: Rabbit Anti-EGFR Polyclonal Antibody (SPC-772) at 1:1000 for 2 hours at RT. Secondary Antibody: Goat Anti-Rabbit IgG: HRP at 1:5000 for 1 hour at RT. Color Development: ECL solution for 5 min at RT. Predicted/Observed Size: ~134.3 kDa. Other Band(s): 44 kDa and 69 kDa.