

**EGFR Antibody**  
**Rabbit Anti-Human EGFR Polyclonal**  
**Catalog # ASM10620****Specification**

---

**EGFR Antibody - Product Information**

Application	<b>WB</b>
Primary Accession	<a href="#">P00533</a>
Other Accession	<a href="#">NP_005219.2</a>
Host	<b>Rabbit</b>
Clonality	<b>Polyclonal</b>
Format	<b>EGFR</b>
<b>Target/Specificity</b>	
EGFR	

**Other Names**

Cell growth inhibiting protein 40 Antibody, Avian erythroblastic leukemia viral (v erb b) oncogene homolog Antibody, Urogastrone Antibody, EGFR Antibody, Receptor tyrosine-protein kinase erbB-1 Antibody, v-erb-b Avian erythroblastic leukemia viral oncogen homolog Antibody, Epidermal growth factor receptor (erythroblastic leukemia viral (v erb b) oncogene homolog avian) Antibody, Errp Antibody, PIG61 Antibody, erb-b2 receptor tyrosine kinase 1 Antibody, ERBB Antibody, mENA Antibody, Epidermal growth factor receptor (avian erythroblastic leukemia viral (v erb b) oncogene homolog) Antibody, ERBB1 Antibody, EGFR\_HUMAN Antibody, SA7 Antibody, Proto-oncogene c-ErbB-1 Antibody, wa2 Antibody, Oncogen ERBB Antibody, Epidermal growth factor receptor Antibody, EGF R Antibody, Receptor tyrosine-protein kinase ErbB-1 Antibody, EC:2.7.10.1 Antibody, Cell proliferation inducing protein 61 Antibody, NISBD2 Antibody, Receptor tyrosine protein kinase ErbB 1 Antibody, HER1 Antibody, Wa5 Antibody, Species antigen 7 Antibody

**Immunogen**

Synthetic peptide from the N-terminal of Human EGFR (aa. 1-100)

**Purification**

Peptide Affinity Purified

Storage **-20°C**

**Storage Buffer**

PBS pH 7.4, 50% glycerol, 0.09% sodium azide \*Storage buffer may change when conjugated

Shipping Temperature

**Blue Ice or 4°C**

**Cellular Localization**

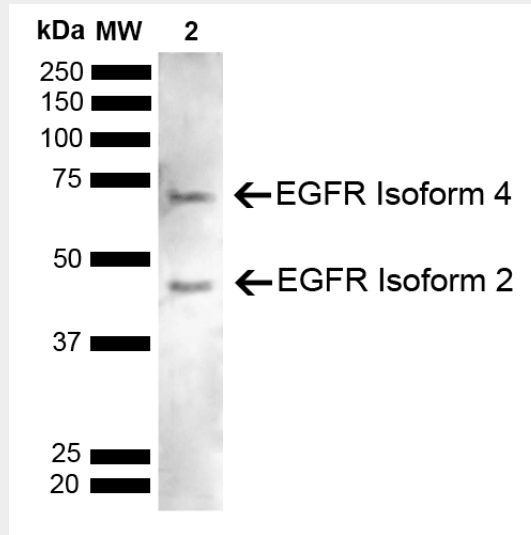
Cell Membrane | Single-Pass Type I Membrane Protein | Endoplasmic Reticulum Membrane | Single-Pass Type I Membrane Protein | Golgi Apparatus Membrane | Single-Pass Type I Membrane Protein | Nucleus Membrane | Single-Pass Type I Membrane Protein | Endosome | Endosome Membrane | Nucleus

**EGFR Antibody - Protocols**

Provided below are standard protocols that you may find useful for product applications.

- [Western Blot](#)
- [Blocking Peptides](#)
- [Dot Blot](#)
- [Immunohistochemistry](#)
- [Immunofluorescence](#)
- [Immunoprecipitation](#)
- [Flow Cytometry](#)
- [Cell Culture](#)

### EGFR Antibody - Images



Western blot analysis of Human Cervical cancer cell line (HeLa) lysate showing detection of ~134.3 kDa EGFR protein using Rabbit Anti-EGFR Polyclonal Antibody (SPC-771). Lane 1: Molecular Weight Ladder (MW). Lane 2: HeLa. Load: 10 µg. Block: 5% Skim Milk in 1X TBST. Primary Antibody: Rabbit Anti-EGFR Polyclonal Antibody (SPC-771) at 1:1000 for 2 hours at RT. Secondary Antibody: Goat Anti-Rabbit IgG: HRP at 1:5000 for 1 hour at RT. Color Development: ECL solution for 5 min at RT. Predicted/Observed Size: ~134.3 kDa. Other Band(s): 44 kDa and 69 kDa.