

PDGFB Antibody
Rabbit Anti-Human PDGFB Polyclonal
Catalog # ASM10619

Specification

PDGFB Antibody - Product Information

Application	WB
Primary Accession	P01127
Other Accession	NP_002599.1
Host	Rabbit
Clonality	Polyclonal
Format	PDGFB
Target/Specificity	
PDGFB	

Other Names

SSV Antibody, PDGF subunit B Antibody, SIS Antibody, Proto-oncogene c-Sis Antibody, Platelet-derived growth factor subunit B Antibody, PDGF-2 Antibody, PDGF 2 Antibody, PDGF B chain Antibody, Pdgfb Antibody, Platelet derived growth factor 2 Antibody, Platelet-derived growth factor beta polypeptide Antibody, INN: Becaplermin Antibody, Becaplermin Antibody, PDGFB_HUMAN Antibody, PDGF2 Antibody, Platelet-derived growth factor B chain Antibody, PDGFB Antibody, PDGF beta Antibody

Immunogen

Synthetic peptide from the mid-protein of Human PDGFB (aa. 100-200)

Purification

Peptide Affinity Purified

Storage **-20°C**

Storage Buffer

PBS pH 7.4, 50% glycerol, 0.09% sodium azide *Storage buffer may change when conjugated

Shipping Temperature **Blue Ice or 4°C**

Cellular Localization

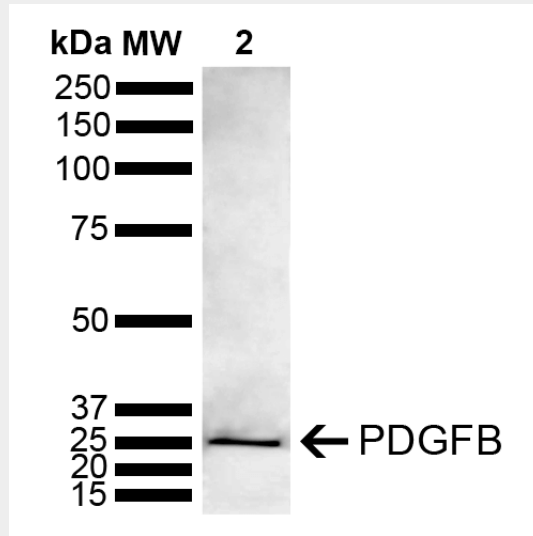
Secreted

PDGFB Antibody - Protocols

Provided below are standard protocols that you may find useful for product applications.

- [Western Blot](#)
- [Blocking Peptides](#)
- [Dot Blot](#)
- [Immunohistochemistry](#)
- [Immunofluorescence](#)
- [Immunoprecipitation](#)
- [Flow Cytometry](#)
- [Cell Culture](#)

PDGFB Antibody - Images



Western blot analysis of Mouse Brain showing detection of ~27.3 kDa PDGFB protein using Rabbit Anti-PDGFB Polyclonal Antibody (SPC-770). Lane 1: Molecular Weight Ladder (MW). Lane 2: Mouse Brain. Load: 15 μ g. Block: 5% Skim Milk in 1X TBST. Primary Antibody: Rabbit Anti-PDGFB Polyclonal Antibody (SPC-770) at 1:1000 for 2 hours at RT. Secondary Antibody: Goat Anti-Rabbit IgG: HRP at 1:5000 for 1 hour at RT. Color Development: ECL solution for 5 min at RT. Predicted/Observed Size: ~27.3 kDa.