

AKT3 Antibody
Rabbit Anti-Human AKT3 Polyclonal
Catalog # ASM10618

Specification

AKT3 Antibody - Product Information

| | |
|---------------------------|--------------------------------|
| Application | WB |
| Primary Accession | O9Y243 |
| Other Accession | NP_001193658.1 |
| Host | Rabbit |
| Clonality | Polyclonal |
| Format | AKT3 |
| Target/Specificity | |
| AKT3 | |

Other Names

RAC-gamma serine/threonine-protein kinase Antibody, AKT3 kinase Antibody, STK2 Antibody, V akt murine thymoma viral oncogene homolog 3 protein kinase B gamma Antibody, V akt murine thymoma viral oncogene homolog 3 Antibody, MPPH Antibody, PKB gamma Antibody, STK-2 Antibody, Akt3 Antibody, STK 2 Antibody, RAC gamma serine/threonine protein kinase Antibody, AKT3_HUMAN Antibody, V akt murine thymoma viral oncogene homolog 3 (protein kinase B, gamma) Antibody, RACPK Gamma Antibody, AKT3 Antibody, Protein kinase Akt-3 Antibody, PRKBG Antibody, PKBG Antibody, Protein Kinase AKT3 Antibody, RAC-PK-gamma Antibody, DKFZp434N0250 Antibody, RAC gamma Antibody, Serine threonine protein kinase Akt3 Antibody, Serine threonine protein kinase Akt 3 Antibody, EC:2.7.11.1 Antibody, Protein kinase B gamma Antibody

Immunogen

Synthetic peptide from the mid-protein of Human AKT3 (aa. 100-200)

Purification

Peptide Affinity Purified

Storage **-20°C**

Storage Buffer

PBS pH 7.4, 50% glycerol, 0.09% sodium azide *Storage buffer may change when conjugated

Shipping Temperature **Blue Ice or 4°C**

Cellular Localization

Nucleus | Cytoplasm | Membrane | Peripheral Membrane Protein

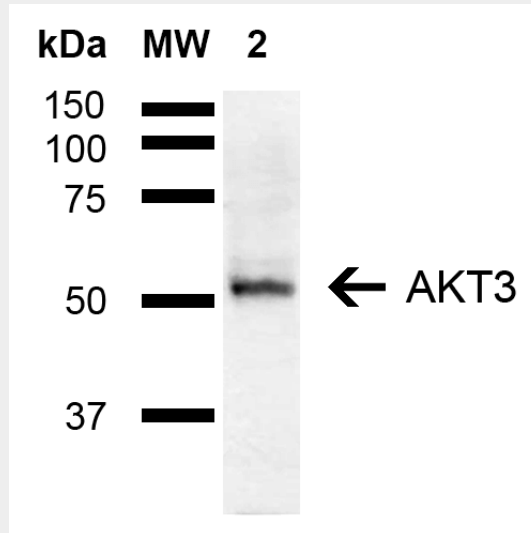
AKT3 Antibody - Protocols

Provided below are standard protocols that you may find useful for product applications.

- [Western Blot](#)
- [Blocking Peptides](#)
- [Dot Blot](#)
- [Immunohistochemistry](#)

- [Immunofluorescence](#)
- [Immunoprecipitation](#)
- [Flow Cytometry](#)
- [Cell Culture](#)

AKT3 Antibody - Images



Western blot analysis of Mouse Brain showing detection of ~55 kDa AKT3 protein using Rabbit Anti-AKT3 Polyclonal Antibody (SPC-769). Lane 1: Molecular Weight Ladder (MW). Lane 2: Mouse Brain. Load: 15 μ g. Block: 5% Skim Milk in 1X TBST. Primary Antibody: Rabbit Anti-AKT3 Polyclonal Antibody (SPC-769) at 1:1000 for 2 hours at RT. Secondary Antibody: Goat Anti-Rabbit IgG: HRP at 1:3000 for 1 hour at RT. Color Development: ECL solution for 5 min at RT. Predicted/Observed Size: ~55 kDa.