

AKT1 Antibody
Rabbit Anti-Human AKT1 Polyclonal
Catalog # ASM10617

Specification

AKT1 Antibody - Product Information

Application	IHC
Primary Accession	P31749
Other Accession	NP_001014431.1
Host	Rabbit
Clonality	Polyclonal
Format	AKT1
Target/Specificity	
AKT1	

Other Names

RAC-alpha serine/threonine-protein kinase Antibody, Protein Kinase B Alpha Antibody, EC:2.7.11.1 Antibody, AKT1 Antibody, AKT Antibody, MGC99656 Antibody, PKB alpha Antibody, PKB-ALPHA Antibody, AKT 1 Antibody, RAC-PK-alpha Antibody, PRKBA Antibody, PKB Antibody, Protein kinase B alpha Antibody, Protein kinase B Antibody, Proto-oncogene c-Akt Antibody, AKT1_HUMAN Antibody, RAC Antibody, RAC Alpha Antibody

Immunogen

Synthetic peptide from the mid-protein of Human AKT1 (aa. 100-200)

Purification

Peptide Affinity Purified

Storage **-20°C**

Storage Buffer

PBS pH 7.4, 50% glycerol, 0.09% sodium azide *Storage buffer may change when conjugated

Shipping Temperature **Blue Ice or 4°C**

Cellular Localization

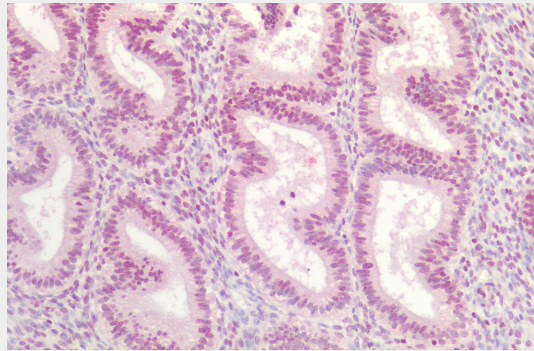
Cytoplasm | Nucleus | Cell Membrane

AKT1 Antibody - Protocols

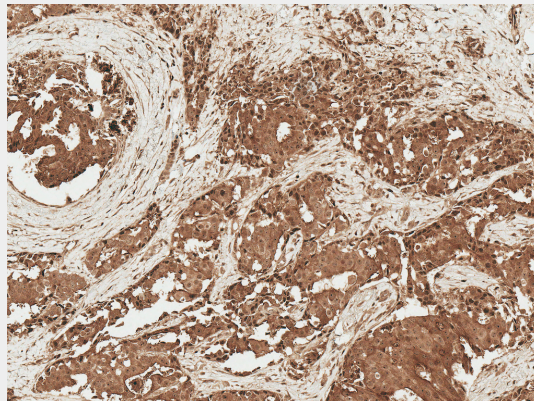
Provided below are standard protocols that you may find useful for product applications.

- [Western Blot](#)
- [Blocking Peptides](#)
- [Dot Blot](#)
- [Immunohistochemistry](#)
- [Immunofluorescence](#)
- [Immunoprecipitation](#)
- [Flow Cytometry](#)
- [Cell Culture](#)

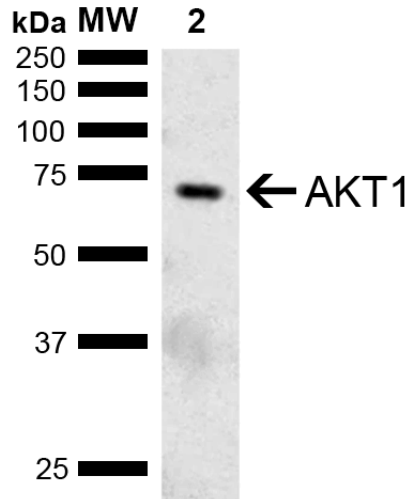
AKT1 Antibody - Images



Immunohistochemistry analysis using Rabbit Anti-AKT1 Polyclonal Antibody (SPC-768). Tissue: Uterus. Species: Human. Fixation: Formalin fixed paraffin-embedded. Primary Antibody: Rabbit Anti-AKT1 Polyclonal Antibody (SPC-768). | Immunohistochemistry analysis using Rabbit Anti-AKT1 Polyclonal Antibody (SPC-768). Tissue: Breast Cancer. Species: Human. Fixation: Formalin Fixed Paraffin-Embedded. Primary Antibody: Rabbit Anti-AKT1 Polyclonal Antibody (SPC-768) at 1:50 for 30 min at RT. Counterstain: Hematoxylin. Magnification: 10X. HRP-DAB Detection. | Western blot analysis of Mouse Brain showing detection of ~55.7 kDa AKT1 protein using Rabbit Anti-AKT1 Polyclonal Antibody (SPC-768). Lane 1: Molecular Weight Ladder (MW). Lane 2: Mouse Brain. Load: 15 µg. Block: 5% Skim Milk in 1X TBST. Primary Antibody: Rabbit Anti-AKT1 Polyclonal Antibody (SPC-768) at 1:1000 for 2 hours at RT. Secondary Antibody: Goat Anti-Rabbit IgG: HRP at 1:5000 for 1 hour at RT. Color Development: ECL solution for 5 min at RT. Predicted/Observed Size: ~55.7 kDa. Other Band(s): Band is detected at ~65 kDa, due to post translational modifications.



Immunohistochemistry analysis using Rabbit Anti-AKT1 Polyclonal Antibody (SPC-768). Tissue: Uterus. Species: Human. Fixation: Formalin fixed paraffin-embedded. Primary Antibody: Rabbit Anti-AKT1 Polyclonal Antibody (SPC-768). | Immunohistochemistry analysis using Rabbit Anti-AKT1 Polyclonal Antibody (SPC-768). Tissue: Breast Cancer. Species: Human. Fixation: Formalin Fixed Paraffin-Embedded. Primary Antibody: Rabbit Anti-AKT1 Polyclonal Antibody (SPC-768) at 1:50 for 30 min at RT. Counterstain: Hematoxylin. Magnification: 10X. HRP-DAB Detection. | Western blot analysis of Mouse Brain showing detection of ~55.7 kDa AKT1 protein using Rabbit Anti-AKT1 Polyclonal Antibody (SPC-768). Lane 1: Molecular Weight Ladder (MW). Lane 2: Mouse Brain. Load: 15 µg. Block: 5% Skim Milk in 1X TBST. Primary Antibody: Rabbit Anti-AKT1 Polyclonal Antibody (SPC-768) at 1:1000 for 2 hours at RT. Secondary Antibody: Goat Anti-Rabbit IgG: HRP at 1:5000 for 1 hour at RT. Color Development: ECL solution for 5 min at RT. Predicted/Observed Size: ~55.7 kDa. Other Band(s): Band is detected at ~65 kDa, due to post translational modifications.



Immunohistochemistry analysis using Rabbit Anti-AKT1 Polyclonal Antibody (SPC-768). Tissue: Uterus. Species: Human. Fixation: Formalin fixed paraffin-embedded. Primary Antibody: Rabbit Anti-AKT1 Polyclonal Antibody (SPC-768). | Immunohistochemistry analysis using Rabbit Anti-AKT1 Polyclonal Antibody (SPC-768). Tissue: Breast Cancer. Species: Human. Fixation: Formalin Fixed Paraffin-Embedded. Primary Antibody: Rabbit Anti-AKT1 Polyclonal Antibody (SPC-768) at 1:50 for 30 min at RT. Counterstain: Hematoxylin. Magnification: 10X. HRP-DAB Detection. | Western blot analysis of Mouse Brain showing detection of ~55.7 kDa AKT1 protein using Rabbit Anti-AKT1 Polyclonal Antibody (SPC-768). Lane 1: Molecular Weight Ladder (MW). Lane 2: Mouse Brain. Load: 15 µg. Block: 5% Skim Milk in 1X TBST. Primary Antibody: Rabbit Anti-AKT1 Polyclonal Antibody (SPC-768) at 1:1000 for 2 hours at RT. Secondary Antibody: Goat Anti-Rabbit IgG: HRP at 1:5000 for 1 hour at RT. Color Development: ECL solution for 5 min at RT. Predicted/Observed Size: ~55.7 kDa. Other Band(s): Band is detected at ~65 kDa, due to post translational modifications.