

**TSC2 Antibody**  
**Rabbit Anti-Human TSC2 Polyclonal**  
**Catalog # ASM10616**

**Specification**

---

**TSC2 Antibody - Product Information**

Application	IHC
Primary Accession	<a href="#">P49815</a>
Other Accession	<a href="#">NP_000539.2</a>
Host	Rabbit
Clonality	Polyclonal
Format	TSC2
<b>Target/Specificity</b>	
TSC2	

**Other Names**

Tuberin Antibody, TSC4 Antibody, TSC2 Antibody, Tuberous sclerosis 2 protein Antibody, , FLJ43106 antibody, LAM antibody, OTTHUMP00000158940 antibody, OTTHUMP00000198394 antibody, OTTHUMP00000198395 antibody, PPP1R160 antibody, Protein phosphatase 1, regulatory subunit 160 antibody, TSC complex subunit 2 antibody, tsc2 antibody, TSC2\_HUMAN antibody, TSC4 antibody, TSC4 gene, formerly antibody, TSC4, formerly antibody, Tuberin antibody, Tuberous sclerosis 2 antibody, Tuberous sclerosis 2 protein antibody, Tuberous sclerosis 2 protein homolog antibody

**Immunogen**

Synthetic peptide from the N-terminal of Human TSC2 (aa. 1-100)

**Purification**

Peptide Affinity Purified

Storage **-20°C**

**Storage Buffer**

PBS pH 7.4, 50% glycerol, 0.09% sodium azide \*Storage buffer may change when conjugated

Shipping Temperature

**Blue Ice or 4°C**

**Cellular Localization**

Cytoplasm | Membrane | Peripheral Membrane Protein

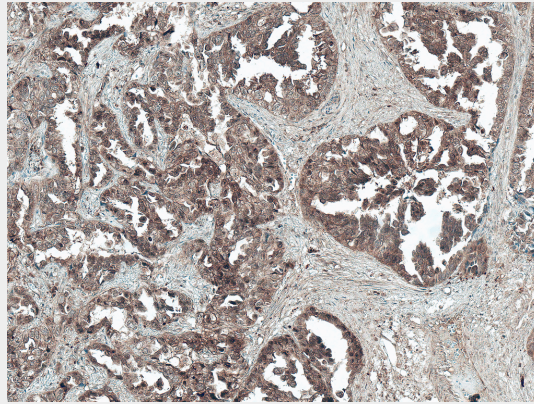
**TSC2 Antibody - Protocols**

Provided below are standard protocols that you may find useful for product applications.

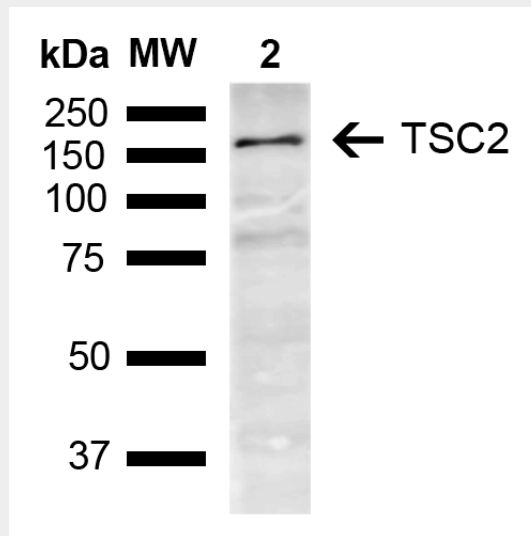
- [Western Blot](#)
- [Blocking Peptides](#)
- [Dot Blot](#)
- [Immunohistochemistry](#)
- [Immunofluorescence](#)
- [Immunoprecipitation](#)
- [Flow Cytometry](#)

- [Cell Culture](#)

## TSC2 Antibody - Images



Immunohistochemistry analysis using Rabbit Anti-TSC2 Polyclonal Antibody (SPC-767). Tissue: Lung Cancer. Species: Human. Fixation: Formalin Fixed Paraffin-Embedded. Primary Antibody: Rabbit Anti-TSC2 Polyclonal Antibody (SPC-767) at 1:50 for 30 min at RT. Counterstain: Hematoxylin. Magnification: 10X. HRP-DAB Detection. | Western blot analysis of Mouse Brain showing detection of ~200.6 kDa TSC2 protein using Rabbit Anti-TSC2 Polyclonal Antibody (SPC-767). Lane 1: Molecular Weight Ladder (MW). Lane 2: Mouse Brain. Load: 15 µg. Block: 5% Skim Milk in 1X TBST. Primary Antibody: Rabbit Anti-TSC2 Polyclonal Antibody (SPC-767) at 1:1000 for 2 hours at RT. Secondary Antibody: Goat Anti-Rabbit IgG: HRP at 1:3000 for 1 hour at RT. Color Development: ECL solution for 5 min at RT. Predicted/Observed Size: ~200.6 kDa.



Immunohistochemistry analysis using Rabbit Anti-TSC2 Polyclonal Antibody (SPC-767). Tissue: Lung Cancer. Species: Human. Fixation: Formalin Fixed Paraffin-Embedded. Primary Antibody: Rabbit Anti-TSC2 Polyclonal Antibody (SPC-767) at 1:50 for 30 min at RT. Counterstain: Hematoxylin. Magnification: 10X. HRP-DAB Detection. | Western blot analysis of Mouse Brain showing detection of ~200.6 kDa TSC2 protein using Rabbit Anti-TSC2 Polyclonal Antibody (SPC-767). Lane 1: Molecular Weight Ladder (MW). Lane 2: Mouse Brain. Load: 15 µg. Block: 5% Skim Milk in 1X TBST. Primary Antibody: Rabbit Anti-TSC2 Polyclonal Antibody (SPC-767) at 1:1000 for 2 hours at RT. Secondary Antibody: Goat Anti-Rabbit IgG: HRP at 1:3000 for 1 hour at RT. Color Development: ECL solution for 5 min at RT. Predicted/Observed Size: ~200.6 kDa.