

SFRP1 Antibody
Rabbit Anti-Human SFRP1 Polyclonal
Catalog # ASM10614

Specification

SFRP1 Antibody - Product Information

Application	IHC
Primary Accession	O8N474
Other Accession	NP_003003.3
Host	Rabbit
Reactivity	Rat
Clonality	Polyclonal
Format	SFRP1
Target/Specificity	
SFRP1	

Other Names

Secreted apoptosis related protein 2 Antibody, FRP Antibody, SFRP1_HUMAN Antibody, Secreted frizzled related protein Antibody, Secreted apoptosis-related protein 2 Antibody, SFRP1 Antibody, SARP-2 Antibody, sFRP-1 Antibody, Secreted frizzled related protein 1 Antibody, Secreted frizzled-related protein 1 Antibody, FRP 1 Antibody, FRP-1 Antibody, FrzA Antibody, SFRP 1 Antibody, FRP1 Antibody, SARP 2 Antibody, Frizzled related protein 1 Antibody, SARP2 Antibody

Immunogen

Synthetic peptide from the N-terminal of Human SFRP1 (aa. 1-100)

Purification

Peptide Affinity Purified

Storage **-20°C**

Storage Buffer

PBS pH 7.4, 50% glycerol, 0.09% sodium azide *Storage buffer may change when conjugated

Shipping Temperature **Blue Ice or 4°C**

Cellular Localization

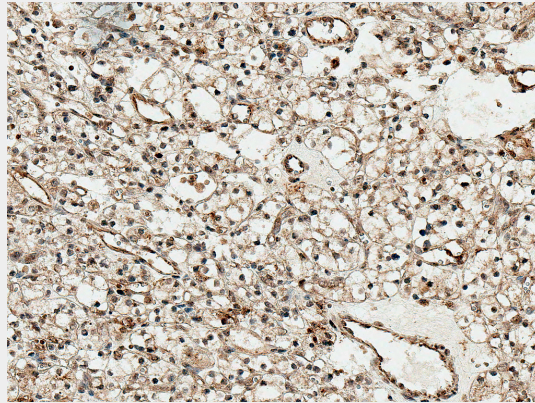
Secreted

SFRP1 Antibody - Protocols

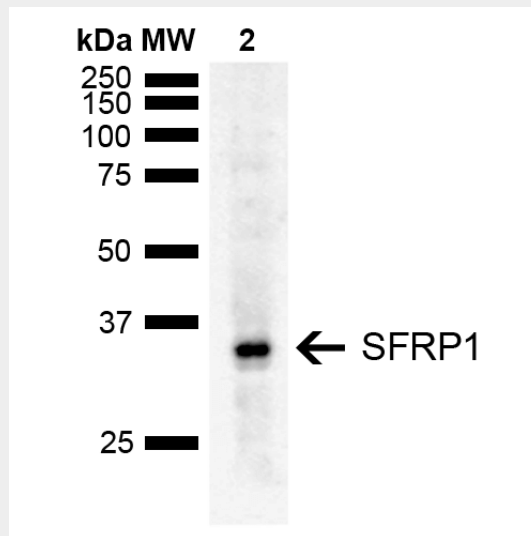
Provided below are standard protocols that you may find useful for product applications.

- [Western Blot](#)
- [Blocking Peptides](#)
- [Dot Blot](#)
- [Immunohistochemistry](#)
- [Immunofluorescence](#)
- [Immunoprecipitation](#)
- [Flow Cytometry](#)
- [Cell Culture](#)

SFRP1 Antibody - Images



Immunohistochemistry analysis using Rabbit Anti-SFRP1 Polyclonal Antibody (SPC-765). Tissue: Kidney. Species: Human. Fixation: Formalin Fixed Paraffin-Embedded. Primary Antibody: Rabbit Anti-SFRP1 Polyclonal Antibody (SPC-765) at 1:50 for 30 min at RT. Counterstain: Hematoxylin. Magnification: 20X. HRP-DAB Detection. | Western blot analysis of Rat Liver showing detection of ~35 kDa SFRP1 protein using Rabbit Anti-SFRP1 Polyclonal Antibody (SPC-765). Lane 1: Molecular Weight Ladder (MW). Lane 2: Rat Liver. Load: 15 µg. Block: 5% Skim Milk in 1X TBST. Primary Antibody: Rabbit Anti-SFRP1 Polyclonal Antibody (SPC-765) at 1:1000 for 2 hours at RT. Secondary Antibody: Goat Anti-Rabbit IgG: HRP at 1:5000 for 1 hour at RT. Color Development: ECL solution for 5 min at RT. Predicted/Observed Size: ~35 kDa.



Immunohistochemistry analysis using Rabbit Anti-SFRP1 Polyclonal Antibody (SPC-765). Tissue: Kidney. Species: Human. Fixation: Formalin Fixed Paraffin-Embedded. Primary Antibody: Rabbit Anti-SFRP1 Polyclonal Antibody (SPC-765) at 1:50 for 30 min at RT. Counterstain: Hematoxylin. Magnification: 20X. HRP-DAB Detection. | Western blot analysis of Rat Liver showing detection of ~35 kDa SFRP1 protein using Rabbit Anti-SFRP1 Polyclonal Antibody (SPC-765). Lane 1: Molecular Weight Ladder (MW). Lane 2: Rat Liver. Load: 15 µg. Block: 5% Skim Milk in 1X TBST. Primary Antibody: Rabbit Anti-SFRP1 Polyclonal Antibody (SPC-765) at 1:1000 for 2 hours at RT. Secondary Antibody: Goat Anti-Rabbit IgG: HRP at 1:5000 for 1 hour at RT. Color Development: ECL solution for 5 min at RT. Predicted/Observed Size: ~35 kDa.