

**LGR5 Antibody**  
**Rabbit Anti-Human LGR5 Polyclonal**  
**Catalog # ASM10613**

**Specification**

---

**LGR5 Antibody - Product Information**

Application	<b>WB</b>
Primary Accession	<a href="#">O75473</a>
Other Accession	<a href="#">NP_001264155.1</a>
Host	<b>Rabbit</b>
Clonality	<b>Polyclonal</b>
Format	<b>LGR5</b>
<b>Target/Specificity</b>	
LGR5	

**Other Names**

GPR49 Antibody, G-protein coupled receptor 67 Antibody, G-protein coupled receptor HG38 Antibody, Leucine-rich repeat-containing G-protein coupled receptor 5 Antibody, LGR5 Antibody, G-protein coupled receptor 49 Antibody, GPR67 Antibody, GPCR GPR49 antibody

**Immunogen**

Synthetic peptide from the mid-protein of Human LGR5 (aa. 500-600)

**Purification**

Peptide Affinity Purified

Storage **-20°C**

**Storage Buffer**

PBS pH 7.4, 50% glycerol, 0.09% sodium azide \*Storage buffer may change when conjugated

Shipping Temperature

**Blue Ice or 4°C**

**Cellular Localization**

Cell Membrane | Multi-Pass Membrane Protein | Golgi Apparatus | Trans-Golgi Network Membrane | Multi-Pass Membrane Protein

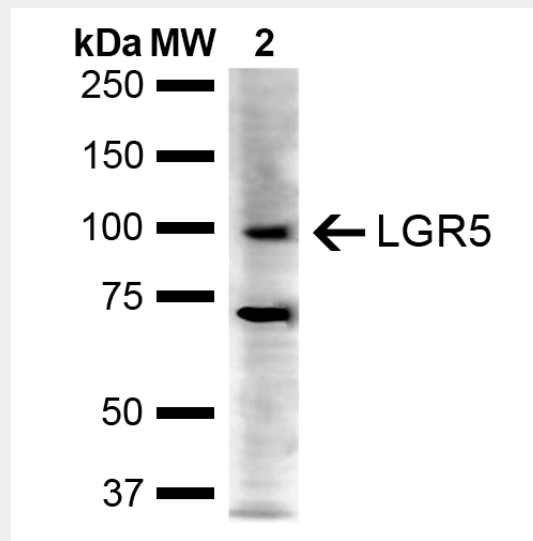
**LGR5 Antibody - Protocols**

Provided below are standard protocols that you may find useful for product applications.

- [Western Blot](#)
- [Blocking Peptides](#)
- [Dot Blot](#)
- [Immunohistochemistry](#)
- [Immunofluorescence](#)
- [Immunoprecipitation](#)
- [Flow Cytometry](#)
- [Cell Culture](#)

**LGR5 Antibody - Images**

---



Western blot analysis of Human Cervical cancer cell line (HeLa) lysate showing detection of ~100 kDa LGR5 protein using Rabbit Anti-LGR5 Polyclonal Antibody (SPC-764). Lane 1: Molecular Weight Ladder (MW). Lane 2: HeLa. Load: 10  $\mu$ g. Block: 5% Skim Milk in 1X TBST. Primary Antibody: Rabbit Anti-LGR5 Polyclonal Antibody (SPC-764) at 1:1000 for 2 hours at RT. Secondary Antibody: Goat Anti-Rabbit IgG: HRP at 1:5000 for 1 hour at RT. Color Development: ECL solution for 5 min at RT. Predicted/Observed Size: ~100 kDa. Other Band(s): 97 kDa, 70 kDa.