

**ROR1 Antibody**  
**Rabbit Anti-Human ROR1 Polyclonal**  
**Catalog # ASM10612**

**Specification**

---

**ROR1 Antibody - Product Information**

Application	<b>WB</b>
Primary Accession	<a href="#">O01973</a>
Other Accession	<a href="#">NP_001077061.1</a>
Host	<b>Rabbit</b>
Reactivity	<b>Rat</b>
Clonality	<b>Polyclonal</b>
Format	<b>ROR1</b>
<b>Target/Specificity</b>	
ROR1	

**Other Names**

ROR 1 Antibody, NTRKR1 Antibody, Neurotrophic tyrosine kinase Antibody, OTTMUSP00000008344 Antibody, Receptor tyrosine kinase like orphan receptor 1 Antibody, Neurotrophic tyrosine kinase receptor related 1 Antibody, RP11 24J23.1 Antibody, Inactive tyrosine-protein kinase transmembrane receptor ROR1 Antibody, Tyrosine protein kinase transmembrane receptor ROR1 Antibody, ROR1\_HUMAN Antibody, Tyrosine-protein kinase transmembrane receptor ROR1 Antibody, Tyrosine kinase like orphan receptor 1 Antibody, OTTHUMP00000010574 Antibody, ROR1 Antibody, RGD1559469 Antibody, Neurotrophic tyrosine kinase, Neurotrophic tyrosine kinase, receptor related 1 Antibody, receptor-related 1 Antibody, dj537F10.1 Antibody, OTTHUMP00000010573 Antibody, MGC99659 Antibody

**Immunogen**

Synthetic peptide from the mid-protein of Human ROR1 (aa. 300-400)

**Purification**

Peptide Affinity Purified

Storage **-20°C**

**Storage Buffer**

PBS pH 7.4, 50% glycerol, 0.09% sodium azide \*Storage buffer may change when conjugated

Shipping Temperature **Blue Ice or 4°C**

**Cellular Localization**

Membrane | Single-Pass Type I Membrane Protein

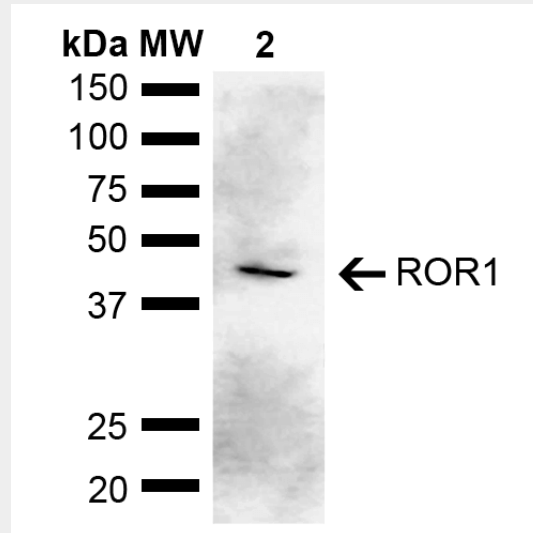
**ROR1 Antibody - Protocols**

Provided below are standard protocols that you may find useful for product applications.

- [Western Blot](#)
- [Blocking Peptides](#)
- [Dot Blot](#)
- [Immunohistochemistry](#)

- [Immunofluorescence](#)
- [Immunoprecipitation](#)
- [Flow Cytometry](#)
- [Cell Culture](#)

### ROR1 Antibody - Images



Western blot analysis of Rat Kidney showing detection of ~43 kDa ROR1 protein using Rabbit Anti-ROR1 Polyclonal Antibody (SPC-763). Lane 1: Molecular Weight Ladder (MW). Lane 2: Rat Kidney. Load: 15  $\mu$ g. Block: 5% Skim Milk in 1X TBST. Primary Antibody: Rabbit Anti-ROR1 Polyclonal Antibody (SPC-763) at 1:1000 for 2 hours at RT. Secondary Antibody: Goat Anti-Rabbit IgG: HRP at 1:4000 for 1 hour at RT. Color Development: ECL solution for 5 min at RT. Predicted/Observed Size: ~43 kDa. Other Band(s): Isoform 3.