

ROR1 Antibody
Rabbit Anti-Human ROR1 Polyclonal
Catalog # ASM10611

Specification

ROR1 Antibody - Product Information

Application	IHC
Primary Accession	O01973
Other Accession	NP_001077061.1
Host	Rabbit
Reactivity	Rat
Clonality	Polyclonal
Format	ROR1
Target/Specificity	
ROR1	

Other Names

ROR 1 Antibody, NTRKR1 Antibody, Neurotrophic tyrosine kinase Antibody, OTTMUSP00000008344 Antibody, Receptor tyrosine kinase like orphan receptor 1 Antibody, Neurotrophic tyrosine kinase receptor related 1 Antibody, RP11 24J23.1 Antibody, Inactive tyrosine-protein kinase transmembrane receptor ROR1 Antibody, Tyrosine protein kinase transmembrane receptor ROR1 Antibody, ROR1_HUMAN Antibody, Tyrosine-protein kinase transmembrane receptor ROR1 Antibody, Tyrosine kinase like orphan receptor 1 Antibody, OTTHUMP00000010574 Antibody, ROR1 Antibody, RGD1559469 Antibody, Neurotrophic tyrosine kinase, Neurotrophic tyrosine kinase, receptor related 1 Antibody, receptor-related 1 Antibody, dj537F10.1 Antibody, OTTHUMP00000010573 Antibody, MGC99659 Antibody

Immunogen

Synthetic peptide from the mid-protein of Human ROR1 (aa. 200-300)

Purification

Peptide Affinity Purified

Storage **-20°C**

Storage Buffer

PBS pH 7.4, 50% glycerol, 0.09% sodium azide *Storage buffer may change when conjugated

Shipping Temperature **Blue Ice or 4°C**

Cellular Localization

Membrane | Single-Pass Type I Membrane Protein

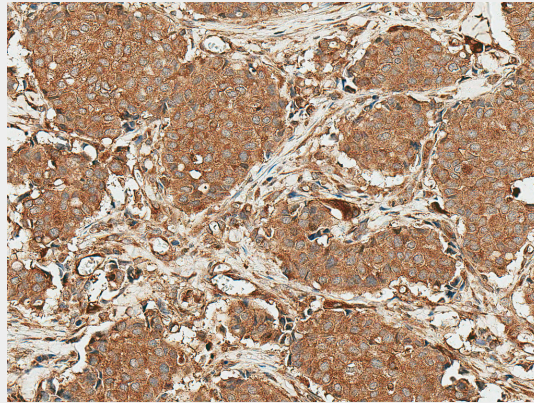
ROR1 Antibody - Protocols

Provided below are standard protocols that you may find useful for product applications.

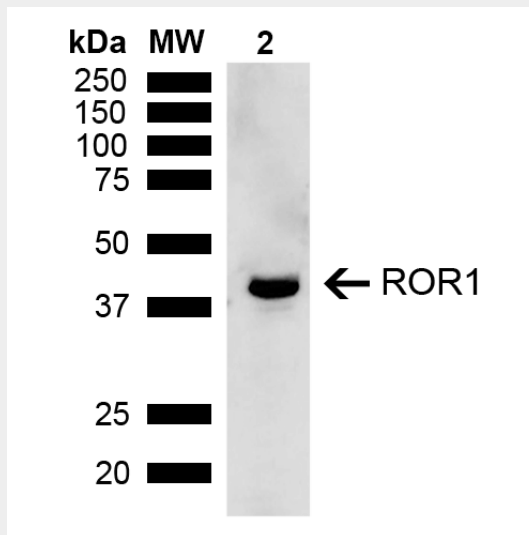
- [Western Blot](#)
- [Blocking Peptides](#)
- [Dot Blot](#)
- [Immunohistochemistry](#)

- [Immunofluorescence](#)
- [Immunoprecipitation](#)
- [Flow Cytometry](#)
- [Cell Culture](#)

ROR1 Antibody - Images



Immunohistochemistry analysis using Rabbit Anti-ROR1 Polyclonal Antibody (SPC-762). Tissue: Breast Cancer. Species: Human. Fixation: Formalin Fixed Paraffin-Embedded. Primary Antibody: Rabbit Anti-ROR1 Polyclonal Antibody (SPC-762) at 1:50 for 30 min at RT. Counterstain: Hematoxylin. Magnification: 20X. HRP-DAB Detection. | Western blot analysis of Rat Kidney showing detection of ~43 kDa ROR1 protein using Rabbit Anti-ROR1 Polyclonal Antibody (SPC-762). Lane 1: Molecular Weight Ladder (MW). Lane 2: Rat Kidney. Load: 15 µg. Block: 5% Skim Milk in 1X TBST. Primary Antibody: Rabbit Anti-ROR1 Polyclonal Antibody (SPC-762) at 1:1000 for 2 hours at RT. Secondary Antibody: Goat Anti-Rabbit IgG: HRP at 1:4000 for 1 hour at RT. Color Development: ECL solution for 5 min at RT. Predicted/Observed Size: ~43 kDa. Other Band(s): Isoform 3.



Immunohistochemistry analysis using Rabbit Anti-ROR1 Polyclonal Antibody (SPC-762). Tissue: Breast Cancer. Species: Human. Fixation: Formalin Fixed Paraffin-Embedded. Primary Antibody: Rabbit Anti-ROR1 Polyclonal Antibody (SPC-762) at 1:50 for 30 min at RT. Counterstain: Hematoxylin. Magnification: 20X. HRP-DAB Detection. | Western blot analysis of Rat Kidney showing detection of ~43 kDa ROR1 protein using Rabbit Anti-ROR1 Polyclonal Antibody (SPC-762). Lane 1: Molecular Weight Ladder (MW). Lane 2: Rat Kidney. Load: 15 µg. Block: 5% Skim Milk in 1X TBST. Primary Antibody: Rabbit Anti-ROR1 Polyclonal Antibody (SPC-762) at

1:1000 for 2 hours at RT. Secondary Antibody: Goat Anti-Rabbit IgG: HRP at 1:4000 for 1 hour at RT. Color Development: ECL solution for 5 min at RT. Predicted/Observed Size: ~43 kDa. Other Band(s): Isoform 3.