

Frizzled 7 Antibody
Rabbit Anti-Human Frizzled 7 Polyclonal
Catalog # ASM10610

Specification

Frizzled 7 Antibody - Product Information

Application	IHC
Primary Accession	O75084
Other Accession	NP_003498.1
Host	Rabbit
Clonality	Polyclonal
Format	Frizzled 7
Target/Specificity	
Frizzled 7	

Other Names

Frizzled7 Antibody, FzE3 Antibody, FZD7_HUMAN Antibody, Frizzled family receptor 7 Antibody, Frizzled homolog 7 Antibody, Frizzled-7 Antibody, hFz 7 Antibody, hFz7 Antibody, Homolog of Drosophila Frizzled 7 Antibody, FzE 3 Antibody, OTTHUMP00000163742 Antibody, Fz 7 Antibody, Fz-7 Antibody, Fz7 Antibody, Frizzled drosophila homolog of 7 Antibody, FZD7 Antibody, Frizzled 7, seven transmembrane spanning receptor Antibody, FZD 7 Antibody, frizzled class receptor 7 Antibody

Immunogen

Synthetic peptide from the mid-protein of Human Frizzled 7 (aa. 100-200)

Purification

Peptide Affinity Purified

Storage **-20°C**

Storage Buffer

PBS pH 7.4, 50% glycerol, 0.09% sodium azide *Storage buffer may change when conjugated

Shipping Temperature **Blue Ice or 4°C**

Cellular Localization

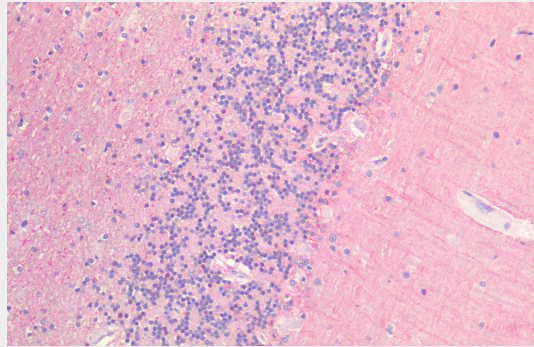
Membrane | Multi-Pass Membrane Protein | Cell Membrane | Multi-Pass Membrane Protein

Frizzled 7 Antibody - Protocols

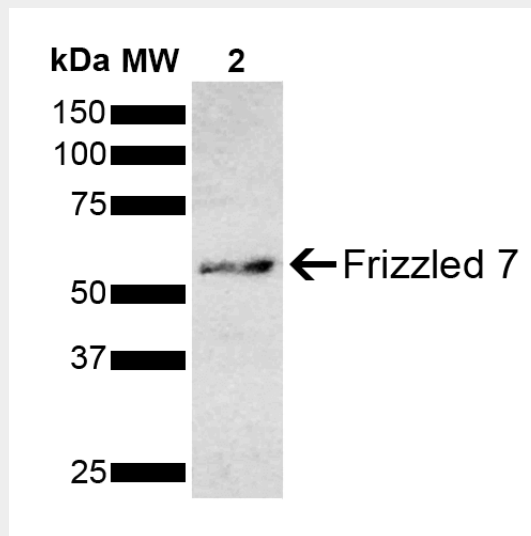
Provided below are standard protocols that you may find useful for product applications.

- [Western Blot](#)
- [Blocking Peptides](#)
- [Dot Blot](#)
- [Immunohistochemistry](#)
- [Immunofluorescence](#)
- [Immunoprecipitation](#)
- [Flow Cytometry](#)
- [Cell Culture](#)

Frizzled 7 Antibody - Images



Immunohistochemistry analysis using Rabbit Anti-Frizzled 7 Polyclonal Antibody (SPC-761). Tissue: Cerebellum. Species: Human. Fixation: Formalin fixed paraffin-embedded. Primary Antibody: Rabbit Anti-Frizzled 7 Polyclonal Antibody (SPC-761). | Western blot analysis of Mouse Brain showing detection of ~63 kDa Frizzled 7 protein using Rabbit Anti-Frizzled 7 Polyclonal Antibody (SPC-761). Lane 1: Molecular Weight Ladder (MW). Lane 2: Mouse Brain. Load: 15 µg. Block: 5% Skim Milk in 1X TBST. Primary Antibody: Rabbit Anti-Frizzled 7 Polyclonal Antibody (SPC-761) at 1:1000 for 2 hours at RT. Secondary Antibody: Goat Anti-Rabbit IgG: HRP at 1:4000 for 1 hour at RT. Color Development: ECL solution for 5 min at RT. Predicted/Observed Size: ~63 kDa.



Immunohistochemistry analysis using Rabbit Anti-Frizzled 7 Polyclonal Antibody (SPC-761). Tissue: Cerebellum. Species: Human. Fixation: Formalin fixed paraffin-embedded. Primary Antibody: Rabbit Anti-Frizzled 7 Polyclonal Antibody (SPC-761). | Western blot analysis of Mouse Brain showing detection of ~63 kDa Frizzled 7 protein using Rabbit Anti-Frizzled 7 Polyclonal Antibody (SPC-761). Lane 1: Molecular Weight Ladder (MW). Lane 2: Mouse Brain. Load: 15 µg. Block: 5% Skim Milk in 1X TBST. Primary Antibody: Rabbit Anti-Frizzled 7 Polyclonal Antibody (SPC-761) at 1:1000 for 2 hours at RT. Secondary Antibody: Goat Anti-Rabbit IgG: HRP at 1:4000 for 1 hour at RT. Color Development: ECL solution for 5 min at RT. Predicted/Observed Size: ~63 kDa.