

Wnt4 Antibody
Rabbit Anti-Human Wnt4 Polyclonal
Catalog # ASM10609

Specification

Wnt4 Antibody - Product Information

Application	IHC
Primary Accession	P56705
Other Accession	NP_110388.2
Host	Rabbit
Clonality	Polyclonal
Format	Wnt4
Target/Specificity	
Wnt4	

Other Names

UNQ426/PRO864 Antibody, Protein Wnt-4 Antibody, WNT4 Antibody

Immunogen

Synthetic peptide from the C-terminal of Human Wnt4 (aa. 250-351)

Purification

Peptide Affinity Purified

Storage -20°C

Storage Buffer

PBS pH 7.4, 50% glycerol, 0.09% sodium azide *Storage buffer may change when conjugated

Shipping Temperature Blue Ice or 4°C

Cellular Localization

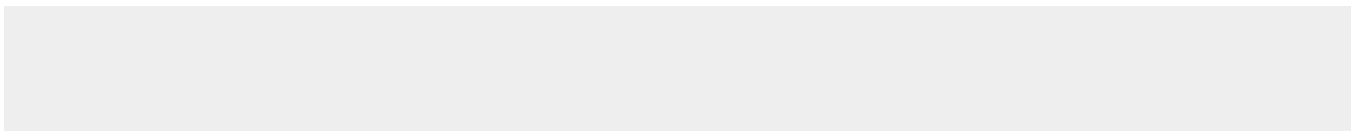
Secreted | Extracellular Space | Extracellular Matrix

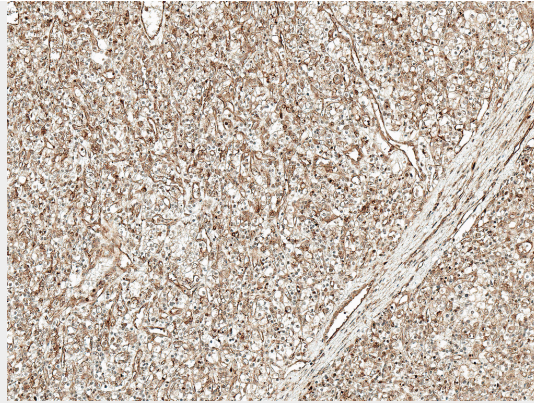
Wnt4 Antibody - Protocols

Provided below are standard protocols that you may find useful for product applications.

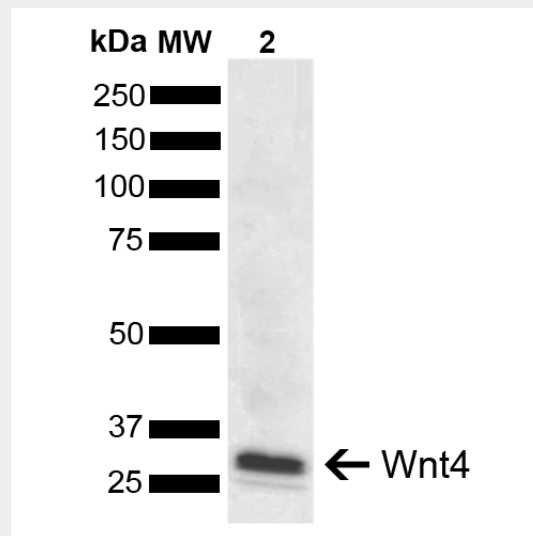
- [Western Blot](#)
- [Blocking Peptides](#)
- [Dot Blot](#)
- [Immunohistochemistry](#)
- [Immunofluorescence](#)
- [Immunoprecipitation](#)
- [Flow Cytometry](#)
- [Cell Culture](#)

Wnt4 Antibody - Images





Immunohistochemistry analysis using Rabbit Anti-Wnt4 Polyclonal Antibody (SPC-760). Tissue: Kidney. Species: Human. Fixation: Formalin Fixed Paraffin-Embedded. Primary Antibody: Rabbit Anti-Wnt4 Polyclonal Antibody (SPC-760) at 1:50 for 30 min at RT. Counterstain: Hematoxylin. Magnification: 10X. HRP-DAB Detection. | Western blot analysis of Human Cervical cancer cell line (HeLa) lysate showing detection of ~39.1 kDa Wnt4 protein using Rabbit Anti-Wnt4 Polyclonal Antibody (SPC-760). Lane 1: Molecular Weight Ladder (MW). Lane 2: HeLa. Load: 10 µg. Block: 5% Skim Milk in 1X TBST. Primary Antibody: Rabbit Anti-Wnt4 Polyclonal Antibody (SPC-760) at 1:1000 for 2 hours at RT. Secondary Antibody: Goat Anti-Rabbit IgG: HRP at 1:5000 for 1 hour at RT. Color Development: ECL solution for 5 min at RT. Predicted/Observed Size: ~39.1 kDa. Other Band(s): 33 kDa.



Immunohistochemistry analysis using Rabbit Anti-Wnt4 Polyclonal Antibody (SPC-760). Tissue: Kidney. Species: Human. Fixation: Formalin Fixed Paraffin-Embedded. Primary Antibody: Rabbit Anti-Wnt4 Polyclonal Antibody (SPC-760) at 1:50 for 30 min at RT. Counterstain: Hematoxylin. Magnification: 10X. HRP-DAB Detection. | Western blot analysis of Human Cervical cancer cell line (HeLa) lysate showing detection of ~39.1 kDa Wnt4 protein using Rabbit Anti-Wnt4 Polyclonal Antibody (SPC-760). Lane 1: Molecular Weight Ladder (MW). Lane 2: HeLa. Load: 10 µg. Block: 5% Skim Milk in 1X TBST. Primary Antibody: Rabbit Anti-Wnt4 Polyclonal Antibody (SPC-760) at 1:1000 for 2 hours at RT. Secondary Antibody: Goat Anti-Rabbit IgG: HRP at 1:5000 for 1 hour at RT. Color Development: ECL solution for 5 min at RT. Predicted/Observed Size: ~39.1 kDa. Other Band(s): 33 kDa.