

**GSK3 beta Antibody**  
**Rabbit Anti-Human GSK3 beta Polyclonal**  
**Catalog # ASM10607**

**Specification**

---

**GSK3 beta Antibody - Product Information**

Application	IHC
Primary Accession	<a href="#">P49841</a>
Other Accession	<a href="#">NP_001139628.1</a>
Host	Rabbit
Clonality	Polyclonal
Format	GSK3 beta
<b>Target/Specificity</b>	
GSK3 beta	

**Other Names**

GSK-3 beta Antibody, Glycogen Synthase Kinase 3 Beta Antibody, Serine/threonine-protein kinase GSK3B Antibody, EC:2.7.11.1 Antibody, EC:2.7.11.26 Antibody, GSK3B\_HUMAN Antibody, Glycogen synthase kinase-3 beta Antibody, GSK3B Antibody, Serine/threonine-protein kinase GSK3B (EC:2.7.11.1) Antibody, GSK3beta isoform Antibody, GSK 3 beta Antibody

**Immunogen**

Synthetic peptide from the N-terminal of Human GSK3 beta (aa. 1-100)

**Purification**

Peptide Affinity Purified

Storage **-20°C**

**Storage Buffer**

PBS pH 7.4, 50% glycerol, 0.09% sodium azide \*Storage buffer may change when conjugated

Shipping Temperature

**Blue Ice or 4°C**

**Cellular Localization**

Cytoplasm | Nucleus | Cell Membrane

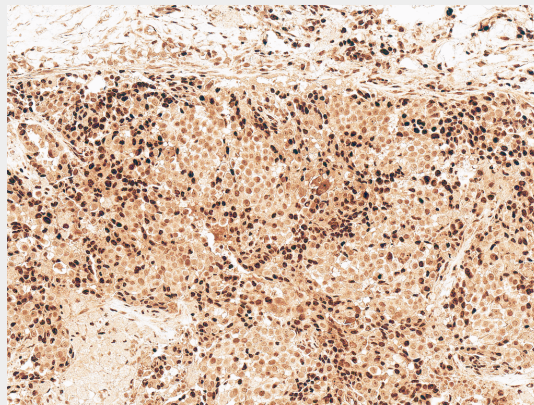
**GSK3 beta Antibody - Protocols**

Provided below are standard protocols that you may find useful for product applications.

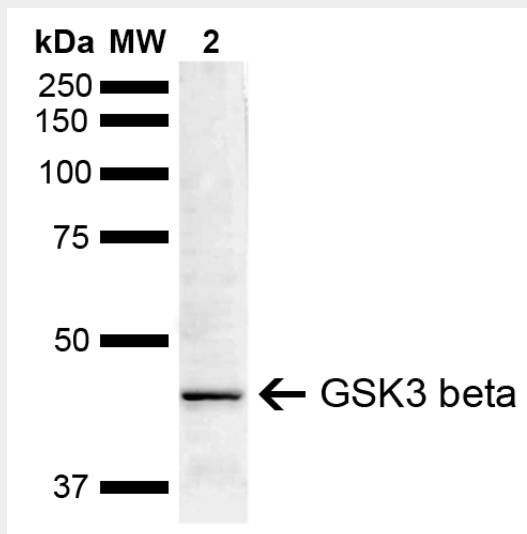
- [Western Blot](#)
- [Blocking Peptides](#)
- [Dot Blot](#)
- [Immunohistochemistry](#)
- [Immunofluorescence](#)
- [Immunoprecipitation](#)
- [Flow Cytometry](#)
- [Cell Culture](#)

**GSK3 beta Antibody - Images**

---



Immunohistochemistry analysis using Rabbit Anti-GSK3 beta Polyclonal Antibody (SPC-758). Tissue: Breast Cancer. Species: Human. Fixation: Formalin Fixed Paraffin-Embedded. Primary Antibody: Rabbit Anti-GSK3 beta Polyclonal Antibody (SPC-758) at 1:50 for 30 min at RT. Counterstain: Hematoxylin. Magnification: 10X. HRP-DAB Detection. | Western blot analysis of Mouse Brain showing detection of ~46.7 kDa GSK3 beta protein using Rabbit Anti-GSK3 beta Polyclonal Antibody (SPC-758). Lane 1: Molecular Weight Ladder (MW). Lane 2: Mouse Brain . Load: 15 µg. Block: 5% Skim Milk in 1X TBST. Primary Antibody: Rabbit Anti-GSK3 beta Polyclonal Antibody (SPC-758) at 1:1000 for 16 hours at 4°C. Secondary Antibody: Goat Anti-Rabbit IgG: HRP at 1:3000 for 1 hour at RT. Color Development: ECL solution for 5 min at RT. Predicted/Observed Size: ~46.7 kDa.



Immunohistochemistry analysis using Rabbit Anti-GSK3 beta Polyclonal Antibody (SPC-758). Tissue: Breast Cancer. Species: Human. Fixation: Formalin Fixed Paraffin-Embedded. Primary Antibody: Rabbit Anti-GSK3 beta Polyclonal Antibody (SPC-758) at 1:50 for 30 min at RT. Counterstain: Hematoxylin. Magnification: 10X. HRP-DAB Detection. | Western blot analysis of Mouse Brain showing detection of ~46.7 kDa GSK3 beta protein using Rabbit Anti-GSK3 beta Polyclonal Antibody (SPC-758). Lane 1: Molecular Weight Ladder (MW). Lane 2: Mouse Brain . Load: 15 µg. Block: 5% Skim Milk in 1X TBST. Primary Antibody: Rabbit Anti-GSK3 beta Polyclonal Antibody (SPC-758) at 1:1000 for 16 hours at 4°C. Secondary Antibody: Goat Anti-Rabbit IgG: HRP at 1:3000 for 1 hour at RT. Color Development: ECL solution for 5 min at RT. Predicted/Observed Size: ~46.7 kDa.