

RAC1 Antibody
Rabbit Anti-Human RAC1 Polyclonal
Catalog # ASM10606

Specification

RAC1 Antibody - Product Information

Application	IHC
Primary Accession	P63000
Other Accession	NP_008839.2
Host	Rabbit
Clonality	Polyclonal
Format	RAC1
Target/Specificity	
RAC1	

Other Names

Ras-like protein TC25 Antibody, ORF Names: Antibody, MIG5 Antibody, TC25 Antibody, p21-Rac1 Antibody, EP300_HUMAN Antibody, EP300: E1A binding protein p300 Antibody, Histone acetyltransferase p300 Antibody, Ras-related C3 botulinum toxin substrate 1 Antibody, Cell migration-inducing gene 5 protein Antibody, p300 HAT Antibody, RAC1 Antibody, E1A binding protein p300 Antibody, E1A-associated protein p300 Antibody, KAT3B Antibody, RSTS2 Antibody, E1A associated protein p300 Antibody, EP300 Antibody

Immunogen

Synthetic peptide from the C-terminal of Human RAC1 (aa. 100-192)

Purification

Peptide Affinity Purified

Storage **-20°C**

Storage Buffer

PBS pH 7.4, 50% glycerol, 0.09% sodium azide *Storage buffer may change when conjugated

Shipping Temperature **Blue Ice or 4°C**

Cellular Localization

Cell Membrane | Lipid-Anchor | Cytoplasmic Side | Melanosome | Cytoplasm

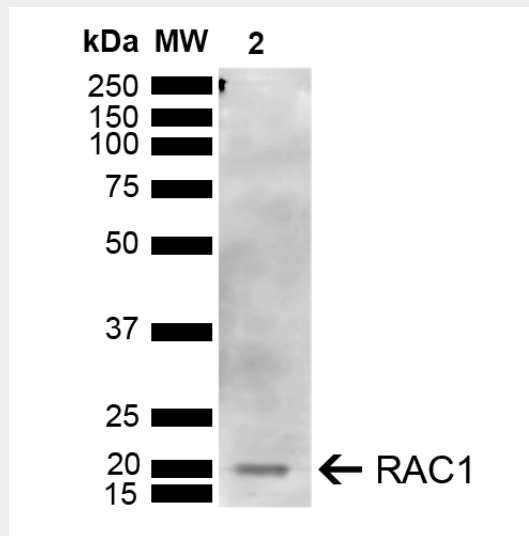
RAC1 Antibody - Protocols

Provided below are standard protocols that you may find useful for product applications.

- [Western Blot](#)
- [Blocking Peptides](#)
- [Dot Blot](#)
- [Immunohistochemistry](#)
- [Immunofluorescence](#)
- [Immunoprecipitation](#)
- [Flow Cytometry](#)
- [Cell Culture](#)

RAC1 Antibody - Images


Immunohistochemistry analysis using Rabbit Anti-RAC1 Polyclonal Antibody (SPC-757). Tissue: Colon Cancer. Species: Human. Fixation: Formalin Fixed Paraffin-Embedded. Primary Antibody: Rabbit Anti-RAC1 Polyclonal Antibody (SPC-757) at 1:50 for 30 min at RT. Counterstain: Hematoxylin. Magnification: 10X. HRP-DAB Detection. | Western blot analysis of Human Embryonic kidney epithelial cell line (HEK293T) lysate showing detection of ~21 kDa RAC1 protein using Rabbit Anti-RAC1 Polyclonal Antibody (SPC-757). Lane 1: Molecular Weight Ladder (MW). Lane 2: HEK293T . Load: 10 μ g. Block: 5% Skim Milk in 1X TBST. Primary Antibody: Rabbit Anti-RAC1 Polyclonal Antibody (SPC-757) at 1:1000 for 2 hours at RT. Secondary Antibody: Goat Anti-Rabbit IgG: HRP at 1:4000 for 1 hour at RT. Color Development: ECL solution for 5 min at RT. Predicted/Observed Size: ~21 kDa.



Immunohistochemistry analysis using Rabbit Anti-RAC1 Polyclonal Antibody (SPC-757). Tissue: Colon Cancer. Species: Human. Fixation: Formalin Fixed Paraffin-Embedded. Primary Antibody: Rabbit Anti-RAC1 Polyclonal Antibody (SPC-757) at 1:50 for 30 min at RT. Counterstain: Hematoxylin. Magnification: 10X. HRP-DAB Detection. | Western blot analysis of Human Embryonic kidney epithelial cell line (HEK293T) lysate showing detection of ~21 kDa RAC1 protein using Rabbit Anti-RAC1 Polyclonal Antibody (SPC-757). Lane 1: Molecular Weight Ladder (MW). Lane 2: HEK293T . Load: 10 μ g. Block: 5% Skim Milk in 1X TBST. Primary Antibody: Rabbit Anti-RAC1 Polyclonal Antibody (SPC-757) at 1:1000 for 2 hours at RT. Secondary Antibody: Goat Anti-Rabbit IgG: HRP at 1:4000 for 1 hour at RT. Color Development: ECL solution for 5 min at RT. Predicted/Observed Size: ~21 kDa.