

**MMP9 Antibody**  
**Rabbit Anti-Human MMP9 Polyclonal**  
**Catalog # ASM10605****Specification**

---

**MMP9 Antibody - Product Information**

Application	<b>WB</b>
Primary Accession	<a href="#">P14780</a>
Other Accession	<a href="#">NP_004985.2</a>
Host	<b>Rabbit</b>
Reactivity	<b>Rat</b>
Clonality	<b>Polyclonal</b>
Format	<b>MMP9</b>
<b>Target/Specificity</b>	
MMP9	

**Other Names**

MMP 9 Antibody, CLG4B Antibody, Matrix metalloproteinase 9 (gelatinase B, 92kDa gelatinase, 92kDa type IV collagenase) Antibody, Matrix Metalloproteinase 9 Antibody, Macrophage gelatinase Antibody, MMP9\_HUMAN Antibody, EC:3.4.24.35 Antibody, MMP-9 Antibody, Gelatinase 92 KD Antibody, GELB Antibody, CLG 4B Antibody, Type V collagenase Antibody, 92 kDa gelatinase Antibody, Gelatinase B Antibody, 82 kDa matrix metalloproteinase-9 Antibody, Collagenase type IV 92 KD Antibody, MANDP2 Antibody, Matrix metalloproteinase-9 Antibody, Gelatinase beta Antibody, Collagenase Type 4 beta Antibody, GelatinaseB Antibody, EC 3.4.24.35 Antibody, 92 kDa type IV collagenase Antibody, MMP9 Antibody

**Immunogen**

Synthetic peptide from the mid-protein of Human MMP9 (aa. 400-500)

**Purification**

Peptide Affinity Purified

Storage **-20°C**

**Storage Buffer**

PBS pH 7.4, 50% glycerol, 0.09% sodium azide \*Storage buffer may change when conjugated

Shipping Temperature **Blue Ice or 4°C**

**Cellular Localization**

Secreted | Extracellular Space | Extracellular Matrix

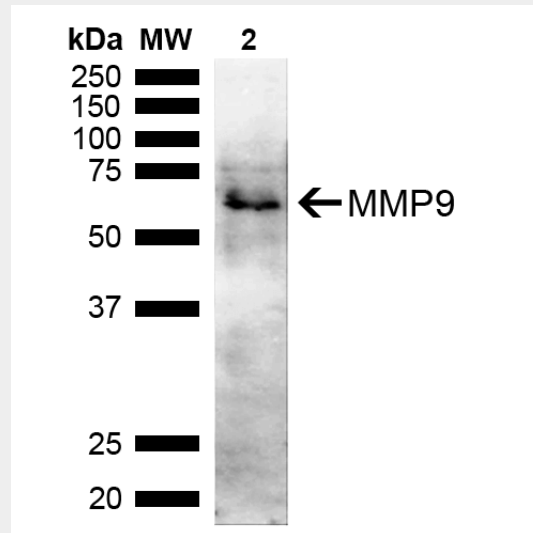
**MMP9 Antibody - Protocols**

Provided below are standard protocols that you may find useful for product applications.

- [Western Blot](#)
- [Blocking Peptides](#)
- [Dot Blot](#)
- [Immunohistochemistry](#)
- [Immunofluorescence](#)

- [Immunoprecipitation](#)
- [Flow Cytometry](#)
- [Cell Culture](#)

### MMP9 Antibody - Images



Western blot analysis of Rat Liver showing detection of ~78 kDa MMP9 protein using Rabbit Anti-MMP9 Polyclonal Antibody (SPC-756). Lane 1: Molecular Weight Ladder (MW). Lane 2: Rat Liver. Load: 15  $\mu$ g. Block: 5% Skim Milk in 1X TBST. Primary Antibody: Rabbit Anti-MMP9 Polyclonal Antibody (SPC-756) at 1:1000 for 2 hours at RT. Secondary Antibody: Goat Anti-Rabbit IgG: HRP at 1:4000 for 1 hour at RT. Color Development: ECL solution for 5 min at RT. Predicted/Observed Size: ~78 kDa. Other Band(s): 64 kDa.