

Presenilin 1 Antibody
Rabbit Anti-Human Presenilin 1 Polyclonal
Catalog # ASM10604

Specification

Presenilin 1 Antibody - Product Information

Application	IHC
Primary Accession	P49768
Other Accession	NP_000012.1
Host	Rabbit
Clonality	Polyclonal
Format	Presenilin 1
Target/Specificity	
Presenilin 1	

Other Names

Homo Sapiens Clone CC44 Senilin 1 Antibody, PSEN1 Antibody, PS 1 Antibody, PSNL1 Antibody, FAD Antibody, Protein S182 Antibody, Ad3h Antibody, PSN1_HUMAN Antibody, Presenilin-1 Antibody, AD3 Antibody, EC:3.4.23.- Antibody, PS1-CTF12 Antibody, PS-1 Antibody, PS1 Antibody, Presenilin-1 CTF12 Antibody, S182 Antibody

Immunogen

Synthetic peptide from the N-terminal of Human Presenilin 1 (aa. 1-100)

Purification

Peptide Affinity Purified

Storage **-20°C**

Storage Buffer

PBS pH 7.4, 50% glycerol, 0.09% sodium azide *Storage buffer may change when conjugated

Shipping Temperature

Blue Ice or 4°C

Cellular Localization

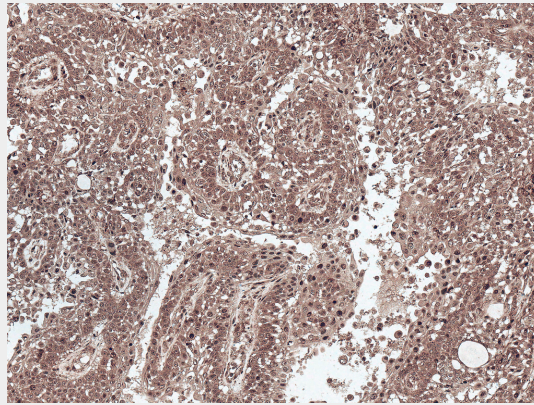
Endoplasmic Reticulum Membrane | Multi-Pass Membrane Protein | Golgi Apparatus Membrane | Multi-Pass Membrane Protein | Cell Surface | Cell Membrane

Presenilin 1 Antibody - Protocols

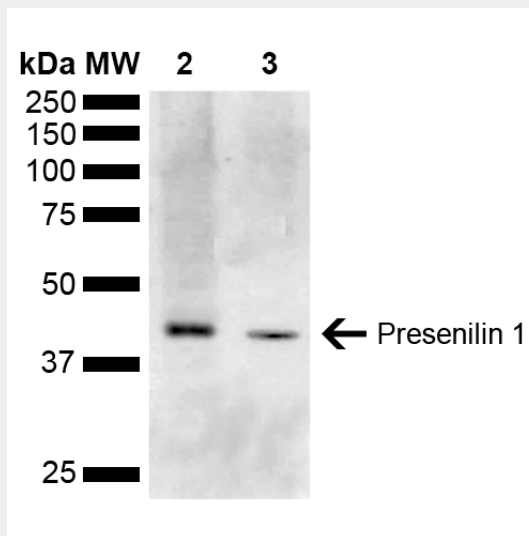
Provided below are standard protocols that you may find useful for product applications.

- [Western Blot](#)
- [Blocking Peptides](#)
- [Dot Blot](#)
- [Immunohistochemistry](#)
- [Immunofluorescence](#)
- [Immunoprecipitation](#)
- [Flow Cytometry](#)
- [Cell Culture](#)

Presenilin 1 Antibody - Images



Immunohistochemistry analysis using Rabbit Anti-Presenilin 1 Polyclonal Antibody (SPC-755). Tissue: Liver. Species: Human. Fixation: Formalin Fixed Paraffin-Embedded. Primary Antibody: Rabbit Anti-Presenilin 1 Polyclonal Antibody (SPC-755) at 1:50 for 30 min at RT. Counterstain: Hematoxylin. Magnification: 10X. | Western blot analysis of Mouse Kidney, Liver showing detection of ~52.7 kDa Presenilin 1 protein using Rabbit Anti-Presenilin 1 Polyclonal Antibody (SPC-755). Lane 1: Molecular Weight Ladder (MW). Lane 2: Mouse Liver. Lane 3: Mouse Kidney. Load: 15 µg. Block: 5% Skim Milk in 1X TBST. Primary Antibody: Rabbit Anti-Presenilin 1 Polyclonal Antibody (SPC-755) at 1:1000 for 2 hours at RT. Secondary Antibody: Goat Anti-Rabbit IgG: HRP at 1:5000 for 1 hour at RT. Color Development: ECL solution for 5 min at RT. Predicted/Observed Size: ~52.7 kDa. Other Band(s): 42.7 kDa band is isoform 5 .



Immunohistochemistry analysis using Rabbit Anti-Presenilin 1 Polyclonal Antibody (SPC-755). Tissue: Liver. Species: Human. Fixation: Formalin Fixed Paraffin-Embedded. Primary Antibody: Rabbit Anti-Presenilin 1 Polyclonal Antibody (SPC-755) at 1:50 for 30 min at RT. Counterstain: Hematoxylin. Magnification: 10X. | Western blot analysis of Mouse Kidney, Liver showing detection of ~52.7 kDa Presenilin 1 protein using Rabbit Anti-Presenilin 1 Polyclonal Antibody (SPC-755). Lane 1: Molecular Weight Ladder (MW). Lane 2: Mouse Liver. Lane 3: Mouse Kidney. Load: 15 µg. Block: 5% Skim Milk in 1X TBST. Primary Antibody: Rabbit Anti-Presenilin 1 Polyclonal Antibody (SPC-755) at 1:1000 for 2 hours at RT. Secondary Antibody: Goat Anti-Rabbit IgG: HRP at 1:5000 for 1 hour at RT. Color Development: ECL solution for 5 min at RT. Predicted/Observed Size: ~52.7 kDa. Other Band(s): 42.7 kDa band is isoform 5 .