

SMAD3 Antibody
Rabbit Anti-Human SMAD3 Polyclonal
Catalog # ASM10603

Specification

SMAD3 Antibody - Product Information

Application	IHC
Primary Accession	P84022
Other Accession	NP_001138574.1
Host	Rabbit
Clonality	Polyclonal
Format	SMAD3
Target/Specificity	
SMAD3	

Other Names

hSMAD3 Antibody, DKFZp686J10186 Antibody, Mothers against decapentaplegic homolog 3 Antibody, Mothers against DPP homolog 3 Antibody, hMAD 3 Antibody, DKFZP586N0721 Antibody, Mad homolog JV15 2 Antibody, LDS1C Antibody, HSPC193 Antibody, MAD homolog 3 Antibody, SMAD3 Antibody, MGC60396 Antibody, Mad3 Antibody, SMAD family member 3 Antibody, SMAD 3 Antibody, MAD (mothers against decapentaplegic Drosophila) homolog 3 Antibody, JV15 2 Antibody, SMAD3_HUMAN Antibody, MADH3 Antibody, JV15-2 Antibody, MAD, mothers against decapentaplegic homolog 3 Antibody, HST17436 Antibody, Smad3 Antibody, SMA and MAD related protein 3 Antibody, SMAD, mothers against DPP homolog 3 Antibody, MADH 3 Antibody, LDS3 Antibody, SMAD Antibody, JV152 Antibody, Mad protein homolog Antibody, hMAD-3 Antibody

Immunogen

Synthetic peptide from the N-terminal of Human SMAD3 (aa. 1-100)

Purification

Peptide Affinity Purified

Storage **-20°C**

Storage Buffer

PBS pH 7.4, 50% glycerol, 0.09% sodium azide *Storage buffer may change when conjugated

Shipping Temperature

Blue Ice or 4°C

Cellular Localization

Cytoplasm | Nucleus

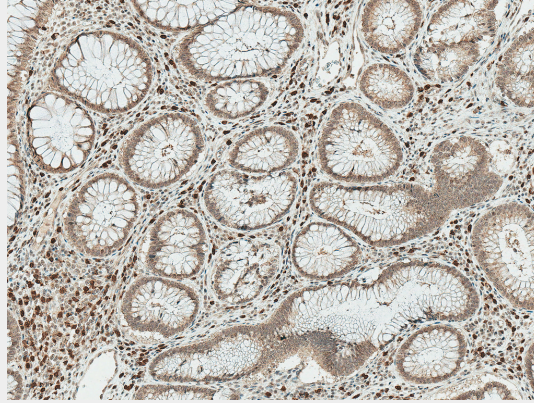
SMAD3 Antibody - Protocols

Provided below are standard protocols that you may find useful for product applications.

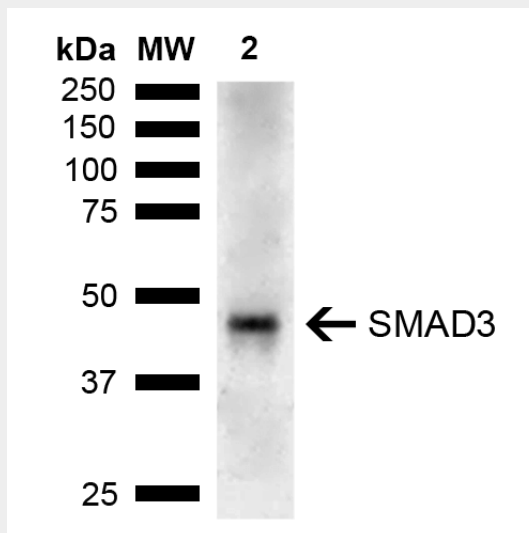
- [Western Blot](#)
- [Blocking Peptides](#)
- [Dot Blot](#)
- [Immunohistochemistry](#)
- [Immunofluorescence](#)

- [Immunoprecipitation](#)
- [Flow Cytometry](#)
- [Cell Culture](#)

SMAD3 Antibody - Images



Immunohistochemistry analysis using Rabbit Anti-SMAD3 Polyclonal Antibody (SPC-754). Tissue: Colon Cancer. Species: Human. Fixation: Formalin Fixed Paraffin-Embedded. Primary Antibody: Rabbit Anti-SMAD3 Polyclonal Antibody (SPC-754) at 1:50 for 30 min at RT. Counterstain: Hematoxylin. Magnification: 10X. HRP-DAB Detection. | Western blot analysis of Human Lung carcinoma epithelial cell line (A549) lysate showing detection of ~48.1 kDa SMAD3 protein using Rabbit Anti-SMAD3 Polyclonal Antibody (SPC-754). Lane 1: Molecular Weight Ladder (MW). Lane 2: A549. Load: 10 µg. Block: 5% Skim Milk in 1X TBST. Primary Antibody: Rabbit Anti-SMAD3 Polyclonal Antibody (SPC-754) at 1:1000 for 2 hours at RT. Secondary Antibody: Goat Anti-Rabbit IgG: HRP at 1:5000 for 1 hour at RT. Color Development: ECL solution for 5 min at RT. Predicted/Observed Size: ~48.1 kDa.



Immunohistochemistry analysis using Rabbit Anti-SMAD3 Polyclonal Antibody (SPC-754). Tissue: Colon Cancer. Species: Human. Fixation: Formalin Fixed Paraffin-Embedded. Primary Antibody: Rabbit Anti-SMAD3 Polyclonal Antibody (SPC-754) at 1:50 for 30 min at RT. Counterstain: Hematoxylin. Magnification: 10X. HRP-DAB Detection. | Western blot analysis of Human Lung carcinoma epithelial cell line (A549) lysate showing detection of ~48.1 kDa SMAD3 protein using Rabbit Anti-SMAD3 Polyclonal Antibody (SPC-754). Lane 1: Molecular Weight Ladder (MW). Lane 2: A549. Load: 10 µg. Block: 5% Skim Milk in 1X TBST. Primary Antibody: Rabbit Anti-SMAD3 Polyclonal Antibody (SPC-754) at 1:1000 for 2 hours at RT. Secondary Antibody: Goat Anti-Rabbit

IgG: HRP at 1:5000 for 1 hour at RT. Color Development: ECL solution for 5 min at RT.
Predicted/Observed Size: ~48.1 kDa.