

CBP Antibody
Rabbit Anti-Human CBP Polyclonal
Catalog # ASM10600

Specification

CBP Antibody - Product Information

Application	IHC
Primary Accession	O92793
Other Accession	NP_001073315.1
Host	Rabbit
Clonality	Polyclonal
Format	CBP
Target/Specificity	
CBP	

Other Names

RSTS Antibody, CBP_HUMAN Antibody, Cyclic AMP responsive enhancer binding protein Antibody, Crebbp Antibody, CREB-binding protein Antibody, Rubinstein Taybi syndrome Antibody, KAT3A Antibody, EC:2.3.1.48 Antibody, CREBBP Antibody, CBP Antibody, RTS Antibody, CREB binding protein Antibody

Immunogen

Synthetic peptide from the mid-protein of Human CBP (aa. 1000-1100)

Purification

Peptide Affinity Purified

Storage **-20°C**

Storage Buffer

PBS pH 7.4, 50% glycerol, 0.09% sodium azide *Storage buffer may change when conjugated

Shipping Temperature

Blue Ice or 4°C

Cellular Localization

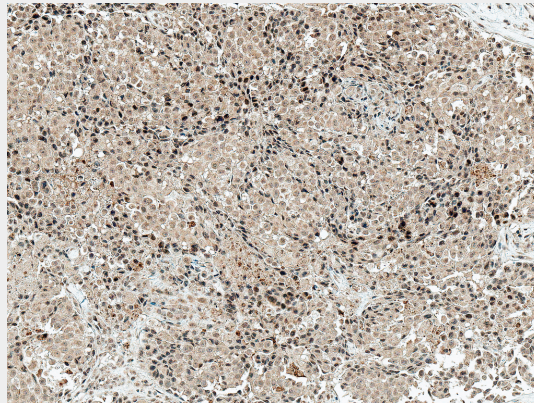
Cytoplasm | Nucleus

CBP Antibody - Protocols

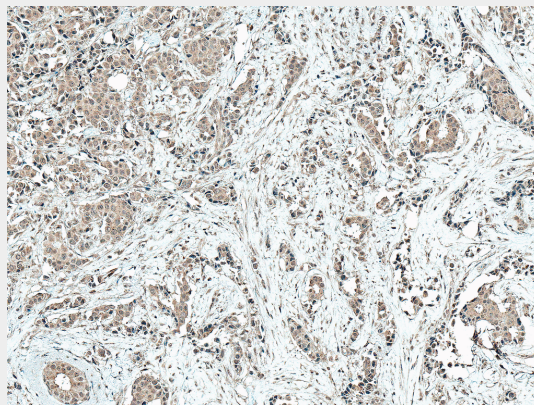
Provided below are standard protocols that you may find useful for product applications.

- [Western Blot](#)
- [Blocking Peptides](#)
- [Dot Blot](#)
- [Immunohistochemistry](#)
- [Immunofluorescence](#)
- [Immunoprecipitation](#)
- [Flow Cytometry](#)
- [Cell Culture](#)

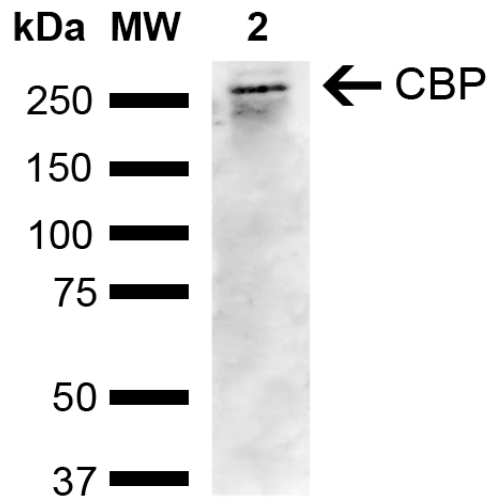
CBP Antibody - Images



Immunohistochemistry analysis using Rabbit Anti-CBP Polyclonal Antibody (SPC-751). Tissue: Breast Cancer. Species: Human. Fixation: Formalin Fixed Paraffin-Embedded. Primary Antibody: Rabbit Anti-CBP Polyclonal Antibody (SPC-751) at 1:50 for 30 min at RT. Counterstain: Hematoxylin. Magnification: 10X. HRP-DAB Detection. | Immunohistochemistry analysis using Rabbit Anti-CBP Polyclonal Antibody (SPC-751). Tissue: Breast Cancer. Species: Human. Fixation: Formalin Fixed Paraffin-Embedded. Primary Antibody: Rabbit Anti-CBP Polyclonal Antibody (SPC-751) at 1:50 for 30 min at RT. Counterstain: Hematoxylin. Magnification: 10X. HRP-DAB Detection. | Western blot analysis of Human Cervical cancer cell line (HeLa) lysate showing detection of ~265.3 kDa CBP protein using Rabbit Anti-CBP Polyclonal Antibody (SPC-751). Lane 1: Molecular Weight Ladder (MW). Lane 2: HeLa. Load: 10 µg. Block: 5% Skim Milk in 1X TBST. Primary Antibody: Rabbit Anti-CBP Polyclonal Antibody (SPC-751) at 1:1000 for 2 hours at RT. Secondary Antibody: Goat Anti-Rabbit IgG: HRP at 1:4000 for 1 hour at RT. Color Development: ECL solution for 5 min at RT. Predicted/Observed Size: ~265.3 kDa.



Immunohistochemistry analysis using Rabbit Anti-CBP Polyclonal Antibody (SPC-751). Tissue: Breast Cancer. Species: Human. Fixation: Formalin Fixed Paraffin-Embedded. Primary Antibody: Rabbit Anti-CBP Polyclonal Antibody (SPC-751) at 1:50 for 30 min at RT. Counterstain: Hematoxylin. Magnification: 10X. HRP-DAB Detection. | Immunohistochemistry analysis using Rabbit Anti-CBP Polyclonal Antibody (SPC-751). Tissue: Breast Cancer. Species: Human. Fixation: Formalin Fixed Paraffin-Embedded. Primary Antibody: Rabbit Anti-CBP Polyclonal Antibody (SPC-751) at 1:50 for 30 min at RT. Counterstain: Hematoxylin. Magnification: 10X. HRP-DAB Detection. | Western blot analysis of Human Cervical cancer cell line (HeLa) lysate showing detection of ~265.3 kDa CBP protein using Rabbit Anti-CBP Polyclonal Antibody (SPC-751). Lane 1: Molecular Weight Ladder (MW). Lane 2: HeLa. Load: 10 µg. Block: 5% Skim Milk in 1X TBST. Primary Antibody: Rabbit Anti-CBP Polyclonal Antibody (SPC-751) at 1:1000 for 2 hours at RT. Secondary Antibody: Goat Anti-Rabbit IgG: HRP at 1:4000 for 1 hour at RT. Color Development: ECL solution for 5 min at RT. Predicted/Observed Size: ~265.3 kDa.



Immunohistochemistry analysis using Rabbit Anti-CBP Polyclonal Antibody (SPC-751). Tissue: Breast Cancer. Species: Human. Fixation: Formalin Fixed Paraffin-Embedded. Primary Antibody: Rabbit Anti-CBP Polyclonal Antibody (SPC-751) at 1:50 for 30 min at RT. Counterstain: Hematoxylin. Magnification: 10X. HRP-DAB Detection. | Immunohistochemistry analysis using Rabbit Anti-CBP Polyclonal Antibody (SPC-751). Tissue: Breast Cancer. Species: Human. Fixation: Formalin Fixed Paraffin-Embedded. Primary Antibody: Rabbit Anti-CBP Polyclonal Antibody (SPC-751) at 1:50 for 30 min at RT. Counterstain: Hematoxylin. Magnification: 10X. HRP-DAB Detection. | Western blot analysis of Human Cervical cancer cell line (HeLa) lysate showing detection of ~265.3 kDa CBP protein using Rabbit Anti-CBP Polyclonal Antibody (SPC-751). Lane 1: Molecular Weight Ladder (MW). Lane 2: HeLa. Load: 10 μ g. Block: 5% Skim Milk in 1X TBST. Primary Antibody: Rabbit Anti-CBP Polyclonal Antibody (SPC-751) at 1:1000 for 2 hours at RT. Secondary Antibody: Goat Anti-Rabbit IgG: HRP at 1:4000 for 1 hour at RT. Color Development: ECL solution for 5 min at RT. Predicted/Observed Size: ~265.3 kDa.