

Axin-2 Antibody
Rabbit Anti-Human Axin-2 Polyclonal
Catalog # ASM10599

Specification

Axin-2 Antibody - Product Information

| | |
|---------------------------|-----------------------------|
| Application | IHC |
| Primary Accession | O9Y2T1 |
| Other Accession | NP_004646.3 |
| Host | Rabbit |
| Reactivity | Rat |
| Clonality | Polyclonal |
| Format | Axin-2 |
| Target/Specificity | |
| Axin-2 | |

Other Names

Axin like protein Antibody, MGC10366 Antibody, AXIN2 Antibody, Axil Antibody, Axis inhibition protein 2 Antibody, DKFZp781B0869 Antibody, Conductin Antibody, Axin2 Antibody, Axin-2 Antibody, MGC126582 Antibody, AXIN2_HUMAN Antibody, Axin-like protein Antibody,

Immunogen

Synthetic peptide from the mid-protein of Human Axin-2 (aa. 200-300)

Purification

Peptide Affinity Purified

Storage **-20°C**

Storage Buffer

PBS pH 7.4, 50% glycerol, 0.09% sodium azide *Storage buffer may change when conjugated

Shipping Temperature

Blue Ice or 4°C

Cellular Localization

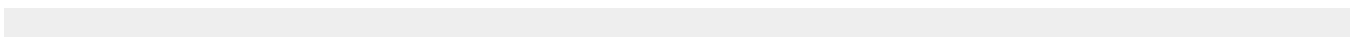
Cytoplasm

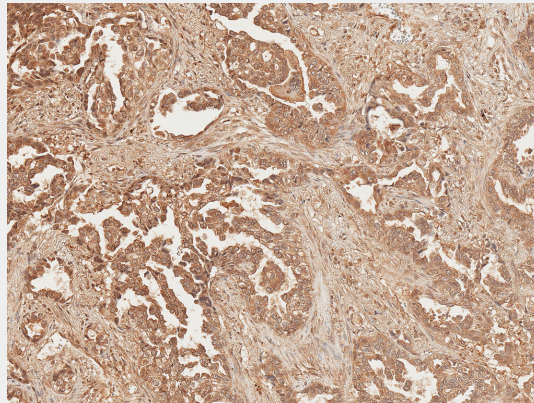
Axin-2 Antibody - Protocols

Provided below are standard protocols that you may find useful for product applications.

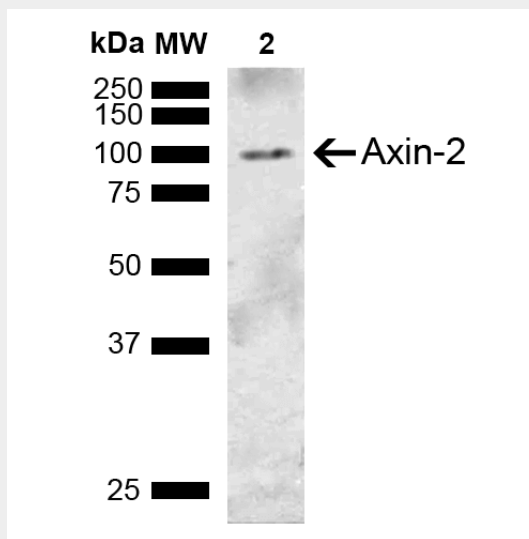
- [Western Blot](#)
- [Blocking Peptides](#)
- [Dot Blot](#)
- [Immunohistochemistry](#)
- [Immunofluorescence](#)
- [Immunoprecipitation](#)
- [Flow Cytometry](#)
- [Cell Culture](#)

Axin-2 Antibody - Images





Immunohistochemistry analysis using Rabbit Anti-Axin-2 Polyclonal Antibody (SPC-750). Tissue: Lung Cancer. Species: Human. Fixation: Formalin Fixed Paraffin-Embedded. Primary Antibody: Rabbit Anti-Axin-2 Polyclonal Antibody (SPC-750) at 1:50 for 30 min at RT. Counterstain: Hematoxylin. Magnification: 10X. | Western blot analysis of Rat Lung showing detection of ~93.5 kDa Axin-2 protein using Rabbit Anti-Axin-2 Polyclonal Antibody (SPC-750). Lane 1: Molecular Weight Ladder (MW). Lane 2: Rat Lung. Load: 15 µg. Block: 5% Skim Milk in 1X TBST. Primary Antibody: Rabbit Anti-Axin-2 Polyclonal Antibody (SPC-750) at 1:1000 for 2 hours at RT. Secondary Antibody: Goat Anti-Rabbit IgG: HRP at 1:3000 for 1 hour at RT. Color Development: ECL solution for 5 min at RT. Predicted/Observed Size: ~93.5 kDa.



Immunohistochemistry analysis using Rabbit Anti-Axin-2 Polyclonal Antibody (SPC-750). Tissue: Lung Cancer. Species: Human. Fixation: Formalin Fixed Paraffin-Embedded. Primary Antibody: Rabbit Anti-Axin-2 Polyclonal Antibody (SPC-750) at 1:50 for 30 min at RT. Counterstain: Hematoxylin. Magnification: 10X. | Western blot analysis of Rat Lung showing detection of ~93.5 kDa Axin-2 protein using Rabbit Anti-Axin-2 Polyclonal Antibody (SPC-750). Lane 1: Molecular Weight Ladder (MW). Lane 2: Rat Lung. Load: 15 µg. Block: 5% Skim Milk in 1X TBST. Primary Antibody: Rabbit Anti-Axin-2 Polyclonal Antibody (SPC-750) at 1:1000 for 2 hours at RT. Secondary Antibody: Goat Anti-Rabbit IgG: HRP at 1:3000 for 1 hour at RT. Color Development: ECL solution for 5 min at RT. Predicted/Observed Size: ~93.5 kDa.