

**Axin-2 Antibody**  
**Rabbit Anti-Human Axin-2 Polyclonal**  
**Catalog # ASM10598**

**Specification**

---

**Axin-2 Antibody - Product Information**

Application	IHC
Primary Accession	<a href="#">O9Y2T1</a>
Other Accession	<a href="#">NP_004646.3</a>
Host	Rabbit
Reactivity	Rat
Clonality	Polyclonal
Format	Axin-2
<b>Target/Specificity</b>	
Axin-2	

**Other Names**

Axin like protein Antibody, MGC10366 Antibody, AXIN2 Antibody, Axil Antibody, Axis inhibition protein 2 Antibody, DKFZp781B0869 Antibody, Conductin Antibody, Axin2 Antibody, Axin-2 Antibody, MGC126582 Antibody, AXIN2\_HUMAN Antibody, Axin-like protein Antibody

**Immunogen**

Synthetic peptide from the mid-protein of Human Axin-2 (aa. 420-520)

**Purification**

Peptide Affinity Purified

Storage **-20°C**

**Storage Buffer**

PBS pH 7.4, 50% glycerol, 0.09% sodium azide \*Storage buffer may change when conjugated

Shipping Temperature

**Blue Ice or 4°C**

**Cellular Localization**

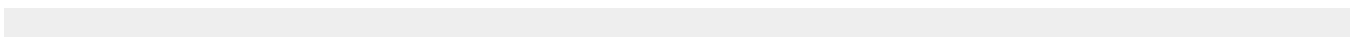
Cytoplasm

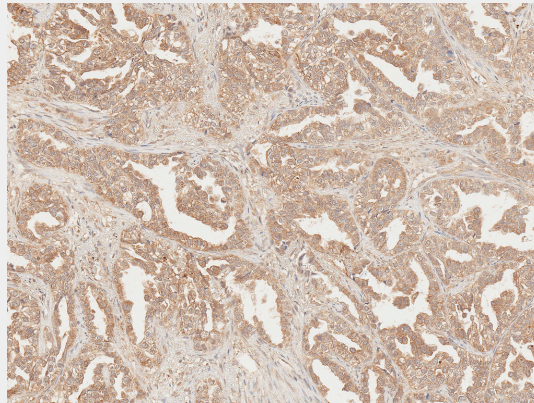
**Axin-2 Antibody - Protocols**

Provided below are standard protocols that you may find useful for product applications.

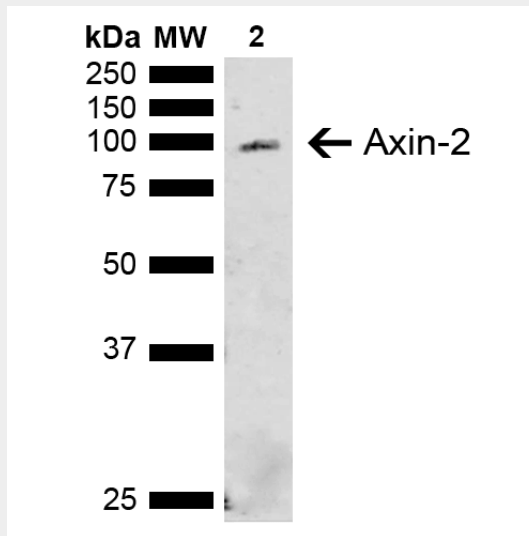
- [Western Blot](#)
- [Blocking Peptides](#)
- [Dot Blot](#)
- [Immunohistochemistry](#)
- [Immunofluorescence](#)
- [Immunoprecipitation](#)
- [Flow Cytometry](#)
- [Cell Culture](#)

**Axin-2 Antibody - Images**





Immunohistochemistry analysis using Rabbit Anti-Axin-2 Polyclonal Antibody (SPC-749). Tissue: Lung Cancer. Species: Human. Fixation: Formalin Fixed Paraffin-Embedded. Primary Antibody: Rabbit Anti-Axin-2 Polyclonal Antibody (SPC-749) at 1:50 for 30 min at RT. Counterstain: Hematoxylin. Magnification: 10X. | Western blot analysis of Rat Liver showing detection of ~93.5 kDa Axin-2 protein using Rabbit Anti-Axin-2 Polyclonal Antibody (SPC-749). Lane 1: Molecular Weight Ladder (MW). Lane 2: Rat Liver. Load: 15 µg. Block: 5% Skim Milk in 1X TBST. Primary Antibody: Rabbit Anti-Axin-2 Polyclonal Antibody (SPC-749) at 1:1000 for 2 hours at RT. Secondary Antibody: Goat Anti-Rabbit IgG: HRP at 1:3000 for 1 hour at RT. Color Development: ECL solution for 5 min at RT. Predicted/Observed Size: ~93.5 kDa.



Immunohistochemistry analysis using Rabbit Anti-Axin-2 Polyclonal Antibody (SPC-749). Tissue: Lung Cancer. Species: Human. Fixation: Formalin Fixed Paraffin-Embedded. Primary Antibody: Rabbit Anti-Axin-2 Polyclonal Antibody (SPC-749) at 1:50 for 30 min at RT. Counterstain: Hematoxylin. Magnification: 10X. | Western blot analysis of Rat Liver showing detection of ~93.5 kDa Axin-2 protein using Rabbit Anti-Axin-2 Polyclonal Antibody (SPC-749). Lane 1: Molecular Weight Ladder (MW). Lane 2: Rat Liver. Load: 15 µg. Block: 5% Skim Milk in 1X TBST. Primary Antibody: Rabbit Anti-Axin-2 Polyclonal Antibody (SPC-749) at 1:1000 for 2 hours at RT. Secondary Antibody: Goat Anti-Rabbit IgG: HRP at 1:3000 for 1 hour at RT. Color Development: ECL solution for 5 min at RT. Predicted/Observed Size: ~93.5 kDa.