

PIK3CA Antibody
Rabbit Anti-Human PIK3CA Polyclonal
Catalog # ASM10590

Specification

PIK3CA Antibody - Product Information

Application	WB
Primary Accession	P42336
Other Accession	NP_006209.2
Host	Rabbit
Clonality	Polyclonal
Format	PIK3CA
Target/Specificity	
PIK3CA	

Other Names

PI 3 Kinase catalytic subunit alpha Antibody, Phosphoinositide 3 kinase catalytic alpha polypeptide Antibody, PI3 kinase p110 subunit alpha Antibody, PtdIns 3 kinase p110 Antibody, PtdIns 3 kinase regulatory subunit alpha Antibody, Phosphatidylinositol 3 kinase regulatory subunit polypeptide 1 Antibody, GRB1 Antibody, PtdIns 3 kinase subunit p110 alpha Antibody, Phosphoinositide 3 kinase regulatory subunit 1 (alpha) Antibody, PtdIns-3-kinase subunit p110-alpha Antibody, PtdIns-3-kinase subunit alpha Antibody, PtdIns 3 kinase regulatory subunit p85 alpha Antibody, p110alpha Antibody, Phosphatidylinositol 4 5 bisphosphate 3 kinase catalytic subunit alpha isoform Antibody, Phosphatidylinositol 3 kinase regulatory 1 Antibody, Phosphatidylinositol 4 5 bisphosphate 3 kinase 110 kDa catalytic subunit alpha Antibody, PIK3R1 Antibody, EC:2.7.11.1 Antibody, Phosphoinositide-3-kinase catalytic alpha polypeptide Antibody, PI3K alpha Antibody, PI3-kinase subunit alpha Antibody, Phosphatidylinositol 3 kinase catalytic alpha polypeptide Antibody, p110 alpha Antibody, Phosphatidylinositol 3 kinase regulatory subunit alpha Antibody, Phosphatidylinositol 3 kinase catalytic 110 KD alpha Antibody, 5-bisphosphate 3-kinase catalytic subunit alpha isoform Antibody, PI3K-alpha Antibody, PI3 kinase subunit alpha Antibody, MGC142163 Antibody, EC:2.7.1.153 Antibody, PI3 kinase regulatory subunit alpha Antibody, p85 alpha Antibody, PI3Kalpha Antibody, Phosphoinositide 3 kinase regulatory subunit 1 Antibody, MGC142161 Antibody, Serine/threonine protein kinase PIK3CA (EC:2.7.11.1) Antibody, 5-bisphosphate 3-kinase 110 kDa catalytic subunit alpha Antibody, PI3K Antibody, Phosphatidylinositol 3 kinase associated p 85 alpha Antibody, p85 Antibody, Phosphatidylinositol 3 kinase 85 kDa regulatory subunit alpha Antibody, Phosphatidylinositol 4, PI3K regulatory subunit alpha Antibody, PI3 kinase subunit p85 alpha Antibody, PIK3CA Antibody, PtdIns 3 kinase subunit alpha Antibody

Immunogen

Synthetic peptide of Human PIK3CA (150-250 aa), conjugated to Keyhole Limpet Haemocyanin (KLH).

Purification

Peptide Affinity Purified

Storage **-20°C**

Storage Buffer

PBS pH 7.4, 50% glycerol, 0.09% sodium azide *Storage buffer may change when conjugated

Shipping Temperature **Blue Ice or 4°C**

Certificate of Analysis

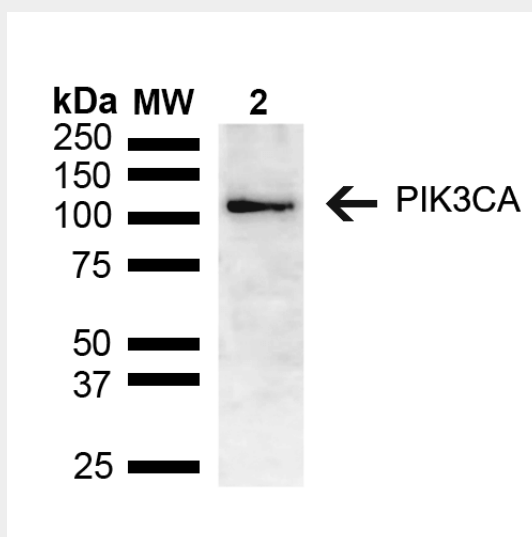
A 1:1000 dilution of SPC-741 was sufficient for detection of PIK3CA in 15 µg of mouse brain cell lysates by ECL immunoblot analysis using goat anti-rabbit IgG:HRP as the secondary antibody.

PIK3CA Antibody - Protocols

Provided below are standard protocols that you may find useful for product applications.

- [Western Blot](#)
- [Blocking Peptides](#)
- [Dot Blot](#)
- [Immunohistochemistry](#)
- [Immunofluorescence](#)
- [Immunoprecipitation](#)
- [Flow Cytometry](#)
- [Cell Culture](#)

PIK3CA Antibody - Images



Western blot analysis of Mouse brain lysate showing detection of ~55.7 kDa PIK3CA protein using Rabbit Anti-PIK3CA Polyclonal Antibody (SPC-741). Lane 1: Molecular Weight Ladder (MW). Lane 2: Mouse brain lysate. Load: 15 µg. Block: 5% Skim Milk in 1X TBST. Primary Antibody: Rabbit Anti-PIK3CA Polyclonal Antibody (SPC-741) at 1:1000 for 2 hours at RT. Secondary Antibody: Goat Anti-Rabbit HRP:IgG at 1:3000 for 1 hour at RT. Color Development: ECL solution for 5 min at RT. Predicted/Observed Size: ~55.7 kDa.