

**RYK Antibody**  
**Rabbit Anti-Human RYK Polyclonal**  
**Catalog # ASM10589**

**Specification**

---

**RYK Antibody - Product Information**

Application	IHC
Primary Accession	<a href="#">P34925</a>
Other Accession	<a href="#">NP_001005861.1</a>
Host	Rabbit
Reactivity	Rat
Clonality	Polyclonal
Format	RYK
<b>Target/Specificity</b>	
RYK	

**Other Names**

Tyrosine protein kinase RYK precursor Antibody, D3S3195 Antibody, Vik Antibody, Tyrosine protein kinase RYK Antibody, JTK5A protein tyrosine kinase Antibody, RYK1 Antibody, RYK 1 Antibody, receptor like tyrosine kinase precursor Antibody, Tyrosine-protein kinase RYK Antibody, receptor like tyrosine kinase Antibody, ERK 3 Antibody, RYK Antibody, JTK 5A Antibody, Hydroxyaryl protein kinase Antibody, JTK5 Antibody, JTK5A Antibody, RYK\_HUMAN Antibody, Ryk Antibody, JTK 5 Antibody

**Immunogen**

Synthetic peptide of Human RYK (150-250 aa), conjugated to Keyhole Limpet Haemocyanin (KLH).

**Purification**

Peptide Affinity Purified

Storage **-20°C**

**Storage Buffer**

PBS pH 7.4, 50% glycerol, 0.09% sodium azide \*Storage buffer may change when conjugated

Shipping Temperature

**Blue Ice or 4°C**

**Certificate of Analysis**

A 1:1000 dilution of SPC-740 was sufficient for detection of RYK in 15 µg of mouse brain cell lysates by ECL immunoblot analysis using goat anti-rabbit IgG:HRP as the secondary antibody.

**Cellular Localization**

Membrane | Single-Pass Type I Membrane Protein | Nucleus | Cytoplasm

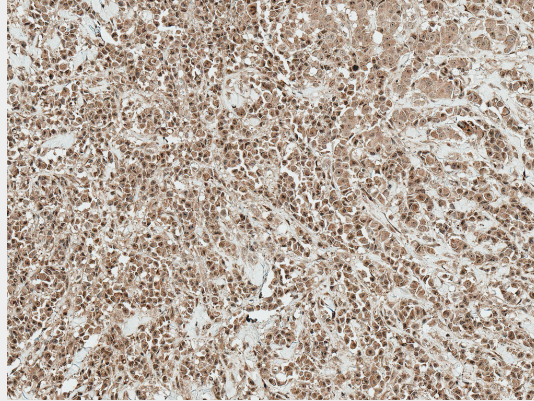
**RYK Antibody - Protocols**

Provided below are standard protocols that you may find useful for product applications.

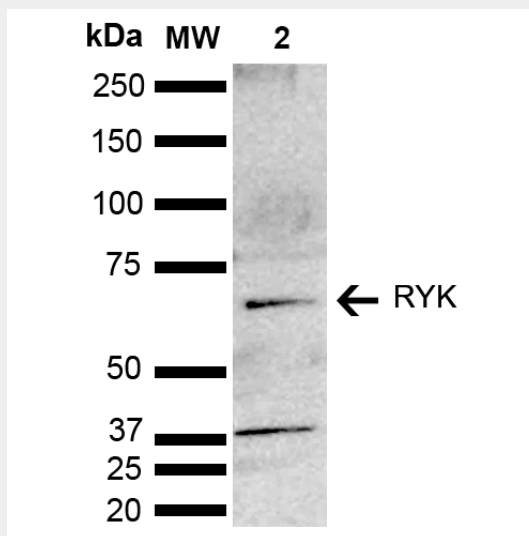
- [Western Blot](#)
- [Blocking Peptides](#)
- [Dot Blot](#)

- [Immunohistochemistry](#)
- [Immunofluorescence](#)
- [Immunoprecipitation](#)
- [Flow Cytometry](#)
- [Cell Culture](#)

**RYK Antibody - Images**



Immunohistochemistry analysis using Rabbit Anti-RYK Polyclonal Antibody (SPC-740). Tissue: Breast Cancer. Species: Human. Fixation: Formalin Fixed Paraffin-Embedded. Primary Antibody: Rabbit Anti-RYK Polyclonal Antibody (SPC-740) at 1:50 for 30 min at RT. Counterstain: Hematoxylin. Magnification: 10X. HRP-DAB Detection. | Western blot analysis of Mouse brain lysate showing detection of ~67.5 kDa RYK protein using Rabbit Anti-RYK Polyclonal Antibody (SPC-740). Lane 1: Molecular Weight Ladder (MW). Lane 2: Mouse brain lysate. Load: 15 µg. Block: 5% Skim Milk in TBST. Primary Antibody: Rabbit Anti-RYK Polyclonal Antibody (SPC-740) at 1:1000 for 2 hours at RT. Secondary Antibody: Goat Anti-Rabbit HRP:IgG at 1:4000 for 1 hour at RT. Color Development: ECL solution for 5 min at RT. Predicted/Observed Size: ~67.5 kDa. Other Band(s): ~37 kDa degradation product.



Immunohistochemistry analysis using Rabbit Anti-RYK Polyclonal Antibody (SPC-740). Tissue: Breast Cancer. Species: Human. Fixation: Formalin Fixed Paraffin-Embedded. Primary Antibody: Rabbit Anti-RYK Polyclonal Antibody (SPC-740) at 1:50 for 30 min at RT. Counterstain: Hematoxylin. Magnification: 10X. HRP-DAB Detection. | Western blot analysis of Mouse brain lysate showing detection of ~67.5 kDa RYK protein using Rabbit Anti-RYK Polyclonal Antibody (SPC-740). Lane 1: Molecular Weight Ladder (MW). Lane 2: Mouse brain lysate. Load: 15 µg. Block:

5% Skim Milk in TBST. Primary Antibody: Rabbit Anti-RYK Polyclonal Antibody (SPC-740) at 1:1000 for 2 hours at RT. Secondary Antibody: Goat Anti-Rabbit HRP:IgG at 1:4000 for 1 hour at RT. Color Development: ECL solution for 5 min at RT. Predicted/Observed Size: ~67.5 kDa. Other Band(s): ~37 kDa degradation product.