

FZD4 Antibody
Rabbit Anti-Human FZD4 Polyclonal
Catalog # ASM10587

Specification

FZD4 Antibody - Product Information

Application	IHC
Primary Accession	O9ULV1
Other Accession	NP_036325.2
Host	Rabbit
Clonality	Polyclonal
Format	FZD4
Target/Specificity	
FZD4	

Other Names

Frizzled-4 Antibody, CD 344 antigen Antibody, CD 344 Antibody, FZD4_HUMAN Antibody, EVR1 Antibody, FzE4 Antibody, FZD4 Antibody, Fz 4 Antibody, Frizzled family receptor 4 Antibody, WNT receptor frizzled 4 Antibody, CD344 antigen Antibody, MGC34390 Antibody, CD344 Antibody, FZD4S Antibody, Frizzled-4 Antibody, Frizzled (Drosophila) homolog 4 Antibody, CD344 Antibody, Fz4 Antibody, GPCR Antibody, Frizzled homolog 4 (Drosophila) Antibody, hFz4 Antibody, Frizzled 4 Antibody, FEVR Antibody, Fz-4 Antibody

Immunogen

Synthetic peptide of Human FZD4 (100-200 aa), conjugated to Keyhole Limpet Haemocyanin (KLH).

Purification

Peptide Affinity Purified

Storage **-20°C**

Storage Buffer

PBS pH 7.4, 50% glycerol, 0.09% sodium azide *Storage buffer may change when conjugated

Shipping Temperature

Blue Ice or 4°C

Certificate of Analysis

A 1:1000 dilution of SPC-738 was sufficient for detection of FZD4 in 15 µg of mouse Testes cell lysates by ECL immunoblot analysis using goat anti-rabbit IgG:HRP as the secondary antibody.

Cellular Localization

Membrane | Multi-Pass Membrane Protein | Cell Membrane | Multi-Pass Membrane Protein

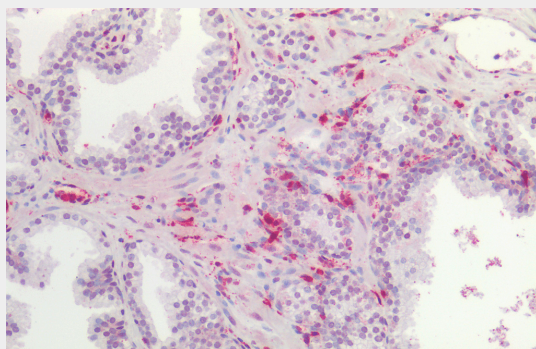
FZD4 Antibody - Protocols

Provided below are standard protocols that you may find useful for product applications.

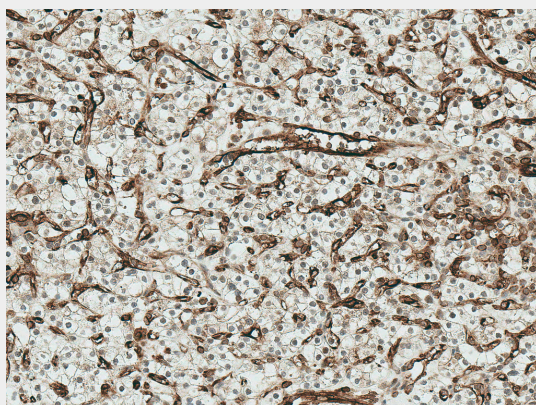
- [Western Blot](#)
- [Blocking Peptides](#)
- [Dot Blot](#)

- [Immunohistochemistry](#)
- [Immunofluorescence](#)
- [Immunoprecipitation](#)
- [Flow Cytometry](#)
- [Cell Culture](#)

FZD4 Antibody - Images

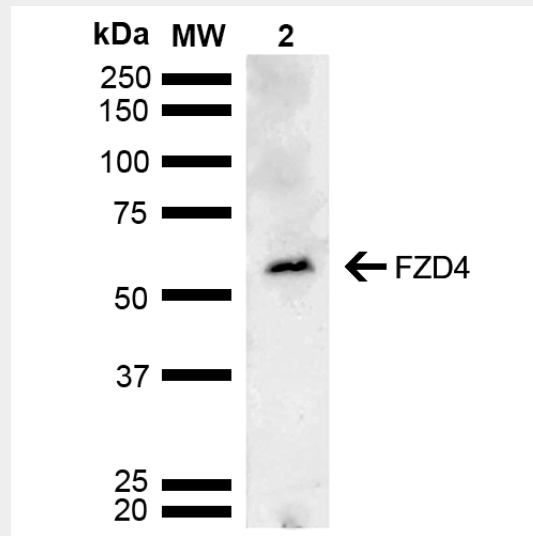


Immunohistochemistry analysis using Rabbit Anti-FZD4 Polyclonal Antibody (SPC-738). Tissue: Prostate. Species: Human. Fixation: Formalin fixed paraffin-embedded. Primary Antibody: Rabbit Anti-FZD4 Polyclonal Antibody (SPC-738). | Immunohistochemistry analysis using Rabbit Anti-FZD4 Polyclonal Antibody (SPC-738). Tissue: Kidney. Species: Human. Fixation: Formalin Fixed Paraffin-Embedded. Primary Antibody: Rabbit Anti-FZD4 Polyclonal Antibody (SPC-738) at 1:50 for 30 min at RT. Counterstain: Hematoxylin. Magnification: 20X. HRP-DAB Detection. | Western blot analysis of Mouse testis lysate showing detection of ~59.9 kDa FZD4 protein using Rabbit Anti-FZD4 Polyclonal Antibody (SPC-738). Lane 1: Molecular Weight Ladder (MW). Lane 2: Mouse testis lysate. Load: 15 µg. Block: 5% Skim Milk in 1X TBST. Primary Antibody: Rabbit Anti-FZD4 Polyclonal Antibody (SPC-738) at 1:1000 for 2 hours at RT. Secondary Antibody: Goat Anti-Rabbit HRP:IgG at 1:4000 for 1 hour at RT. Color Development: ECL solution for 5 min at RT. Predicted/Observed Size: ~59.9 kDa.



Immunohistochemistry analysis using Rabbit Anti-FZD4 Polyclonal Antibody (SPC-738). Tissue: Prostate. Species: Human. Fixation: Formalin fixed paraffin-embedded. Primary Antibody: Rabbit Anti-FZD4 Polyclonal Antibody (SPC-738). | Immunohistochemistry analysis using Rabbit Anti-FZD4 Polyclonal Antibody (SPC-738). Tissue: Kidney. Species: Human. Fixation: Formalin Fixed Paraffin-Embedded. Primary Antibody: Rabbit Anti-FZD4 Polyclonal Antibody (SPC-738) at 1:50 for 30 min at RT. Counterstain: Hematoxylin. Magnification: 20X. HRP-DAB Detection. | Western blot analysis of Mouse testis lysate showing detection of ~59.9 kDa FZD4 protein using Rabbit Anti-FZD4 Polyclonal Antibody (SPC-738). Lane 1: Molecular Weight Ladder (MW). Lane 2: Mouse testis lysate. Load: 15 µg. Block: 5% Skim Milk in 1X TBST. Primary Antibody: Rabbit Anti-FZD4 Polyclonal Antibody (SPC-738) at 1:1000 for 2 hours at RT. Secondary Antibody: Goat Anti-Rabbit

HRP:IgG at 1:4000 for 1 hour at RT. Color Development: ECL solution for 5 min at RT.
Predicted/Observed Size: ~59.9 kDa.



Immunohistochemistry analysis using Rabbit Anti-FZD4 Polyclonal Antibody (SPC-738). Tissue: Prostate. Species: Human. Fixation: Formalin fixed paraffin-embedded. Primary Antibody: Rabbit Anti-FZD4 Polyclonal Antibody (SPC-738). | Immunohistochemistry analysis using Rabbit Anti-FZD4 Polyclonal Antibody (SPC-738). Tissue: Kidney. Species: Human. Fixation: Formalin Fixed Paraffin-Embedded. Primary Antibody: Rabbit Anti-FZD4 Polyclonal Antibody (SPC-738) at 1:50 for 30 min at RT. Counterstain: Hematoxylin. Magnification: 20X. HRP-DAB Detection. | Western blot analysis of Mouse testis lysate showing detection of ~59.9 kDa FZD4 protein using Rabbit Anti-FZD4 Polyclonal Antibody (SPC-738). Lane 1: Molecular Weight Ladder (MW). Lane 2: Mouse testis lysate. Load: 15 µg. Block: 5% Skim Milk in 1X TBST. Primary Antibody: Rabbit Anti-FZD4 Polyclonal Antibody (SPC-738) at 1:1000 for 2 hours at RT. Secondary Antibody: Goat Anti-Rabbit HRP:IgG at 1:4000 for 1 hour at RT. Color Development: ECL solution for 5 min at RT. Predicted/Observed Size: ~59.9 kDa.