

TAK1 Antibody
Rabbit Anti-Human TAK1 Polyclonal
Catalog # ASM10585

Specification

TAK1 Antibody - Product Information

Application	IHC
Primary Accession	O43318
Other Accession	NP_003179.1
Host	Rabbit
Reactivity	Rat
Clonality	Polyclonal
Format	TAK1
Target/Specificity	
TAK1	

Other Names

MAP3K7 Antibody, TAK1 Antibody, Mitogen-activated protein kinase kinase kinase 7 Antibody, TGF-beta-activated kinase 1 Antibody, Transforming growth factor-beta-activated kinase 1 Antibody, MEKK7 Antibody

Immunogen

Synthetic peptide of Human TAK1 (400-500 aa), conjugated to Keyhole Limpet Haemocyanin (KLH).

Purification

Peptide Affinity Purified

Storage **-20°C**

Storage Buffer

PBS pH 7.4, 50% glycerol, 0.09% sodium azide *Storage buffer may change when conjugated

Shipping Temperature **Blue Ice or 4°C**

Certificate of Analysis

A 1:1000 dilution of SPC-736 was sufficient for detection of TAK1 in 15 µg of rat liver cell lysates by ECL immunoblot analysis using goat anti-rabbit IgG:HRP as the secondary antibody.

Cellular Localization

Cytoplasm | Cell Membrane | Peripheral Membrane Protein | Cytoplasmic Side

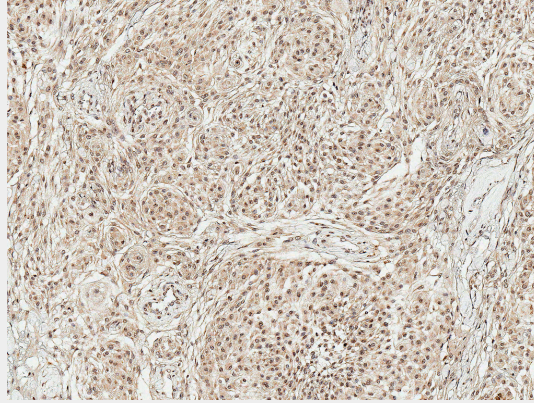
TAK1 Antibody - Protocols

Provided below are standard protocols that you may find useful for product applications.

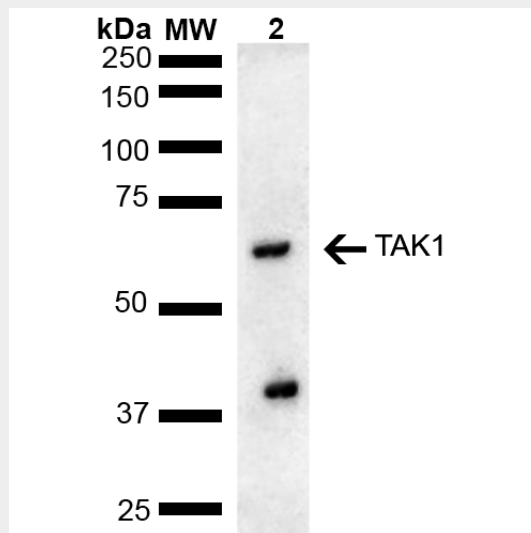
- [Western Blot](#)
- [Blocking Peptides](#)
- [Dot Blot](#)
- [Immunohistochemistry](#)
- [Immunofluorescence](#)

- [Immunoprecipitation](#)
- [Flow Cytometry](#)
- [Cell Culture](#)

TAK1 Antibody - Images



Immunohistochemistry analysis using Rabbit Anti-TAK1 Polyclonal Antibody (SPC-736). Tissue: Brain. Species: Human. Fixation: Formalin Fixed Paraffin-Embedded. Primary Antibody: Rabbit Anti-TAK1 Polyclonal Antibody (SPC-736) at 1:50 for 30 min at RT. Counterstain: Hematoxylin. Magnification: 10X. | Western blot analysis of Rat liver lysate showing detection of ~67.2 kDa TAK1 protein using Rabbit Anti-TAK1 Polyclonal Antibody (SPC-736). Lane 1: Molecular Weight Ladder (MW). Lane 2: Rat liver lysate. Load: 15 µg. Block: 5% Skim Milk in 1X TBST. Primary Antibody: Rabbit Anti-TAK1 Polyclonal Antibody (SPC-736) at 1:1000 for 2 hours at RT. Secondary Antibody: Goat Anti-Rabbit HRP:IgG at 1:4000 for 1 hour at RT. Color Development: ECL solution for 5 min at RT. Predicted/Observed Size: ~67.2 kDa. Other Band(s): ~40 kDa potential degradation product.



Immunohistochemistry analysis using Rabbit Anti-TAK1 Polyclonal Antibody (SPC-736). Tissue: Brain. Species: Human. Fixation: Formalin Fixed Paraffin-Embedded. Primary Antibody: Rabbit Anti-TAK1 Polyclonal Antibody (SPC-736) at 1:50 for 30 min at RT. Counterstain: Hematoxylin. Magnification: 10X. | Western blot analysis of Rat liver lysate showing detection of ~67.2 kDa TAK1 protein using Rabbit Anti-TAK1 Polyclonal Antibody (SPC-736). Lane 1: Molecular Weight Ladder (MW). Lane 2: Rat liver lysate. Load: 15 µg. Block: 5% Skim Milk in 1X TBST. Primary Antibody: Rabbit Anti-TAK1 Polyclonal Antibody (SPC-736) at 1:1000 for 2 hours at RT. Secondary Antibody: Goat Anti-Rabbit HRP:IgG at 1:4000 for 1 hour at RT. Color Development: ECL solution

for 5 min at RT. Predicted/Observed Size: ~67.2 kDa. Other Band(s): ~40 kDa potential degradation product.

TAK1 Antibody - Background

TAK1 encoded by the gene MAP3K7, is a protein-serine/threonine kinase that is activated by proinflammatory cytokines and in response to physical/chemical stress, including UVR, osmotic- and oxidative stress. It is a mediator of TRAF6 and TGF- β signal transduction, and activates IKBKB and MAPK8 in response to TRAF6 signalling. It also stimulates NF κ B activation and activation of the p38 MAPK pathway. It is responsible for controlling a variety of cell functions such as transcription and apoptosis. TAK1 is important for TGF- β 1 regulation of MMP9 and the metastatic potential of certain breast cancer cell lines.