

**MMP7 Antibody**  
**Rabbit Anti-Human MMP7 Polyclonal**  
**Catalog # ASM10584****Specification**

---

**MMP7 Antibody - Product Information**

Application	<b>IHC</b>
Primary Accession	<a href="#">P09237</a>
Other Accession	<a href="#">NP_002414.1</a>
Host	<b>Rabbit</b>
Reactivity	<b>Rat</b>
Clonality	<b>Polyclonal</b>
Format	<b>MMP7</b>
<b>Target/Specificity</b>	
MMP7	

**Other Names**

Matrilysin Antibody, Matrin Antibody, Uterine matrilysin Antibody, Matrix metalloproteinase-7 Antibody, MMP 7 Antibody, MPSL1 Antibody, MMP7 Antibody, PUMP 1 Antibody, Matrix Metalloproteinase 7 Antibody, Pump 1 protease Antibody, PUMP1 Antibody, MMP7\_HUMAN Antibody, MMP-7 Antibody, Pump-1 protease Antibody, Uterine metalloproteinase Antibody

**Immunogen**

Synthetic peptide from the C-terminal of Human MMP7 (257-267 aa), conjugated to Keyhole Limpet Haemocyanin (KLH).

**Purification**

Peptide Affinity Purified

Storage **-20°C**

**Storage Buffer**

PBS pH 7.4, 50% glycerol, 0.09% sodium azide \*Storage buffer may change when conjugated

Shipping Temperature **Blue Ice or 4°C**

**Certificate of Analysis**

A 1:1000 dilution of SPC-735 was sufficient for detection of MMP7 in 10 µg of rat kidney cell lysates by ECL immunoblot analysis using goat anti-rabbit IgG:HRP as the secondary antibody.

**Cellular Localization**

Secreted | Extracellular Space | Extracellular Matrix

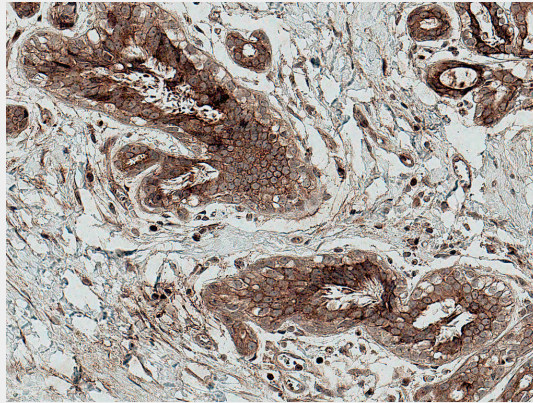
**MMP7 Antibody - Protocols**

Provided below are standard protocols that you may find useful for product applications.

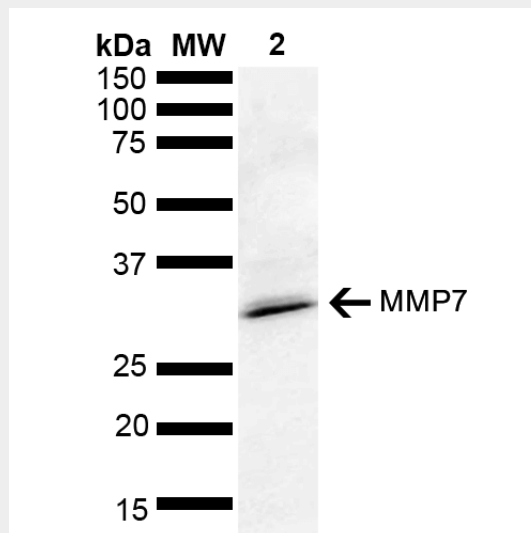
- [Western Blot](#)
- [Blocking Peptides](#)
- [Dot Blot](#)
- [Immunohistochemistry](#)

- [Immunofluorescence](#)
- [Immunoprecipitation](#)
- [Flow Cytometry](#)
- [Cell Culture](#)

**MMP7 Antibody - Images**



Immunohistochemistry analysis using Rabbit Anti-MMP7 Polyclonal Antibody (SPC-735). Tissue: Breast Cancer. Species: Human. Fixation: Formalin Fixed Paraffin-Embedded. Primary Antibody: Rabbit Anti-MMP7 Polyclonal Antibody (SPC-735) at 1:50 for 30 min at RT. Magnification: 20X. | Western blot analysis of Rat kidney lysate showing detection of ~28 kDa MMP7 protein using Rabbit Anti-MMP7 Polyclonal Antibody (SPC-735). Lane 1: Molecular Weight Ladder (MW). Lane 2: Rat kidney lysate. Load: 10 µg. Block: 5% Skim Milk in 1X TBST. Primary Antibody: Rabbit Anti-MMP7 Polyclonal Antibody (SPC-735) at 1:1000 for 2 hours at RT. Secondary Antibody: Goat Anti-Rabbit HRP:IgG at 1:4000 for 1 hour at RT. Color Development: ECL solution for 5 min at RT. Predicted/Observed Size: ~28 kDa.



Immunohistochemistry analysis using Rabbit Anti-MMP7 Polyclonal Antibody (SPC-735). Tissue: Breast Cancer. Species: Human. Fixation: Formalin Fixed Paraffin-Embedded. Primary Antibody: Rabbit Anti-MMP7 Polyclonal Antibody (SPC-735) at 1:50 for 30 min at RT. Magnification: 20X. | Western blot analysis of Rat kidney lysate showing detection of ~28 kDa MMP7 protein using Rabbit Anti-MMP7 Polyclonal Antibody (SPC-735). Lane 1: Molecular Weight Ladder (MW). Lane 2: Rat kidney lysate. Load: 10 µg. Block: 5% Skim Milk in 1X TBST. Primary Antibody: Rabbit Anti-MMP7 Polyclonal Antibody (SPC-735) at 1:1000 for 2 hours at RT. Secondary Antibody: Goat Anti-Rabbit HRP:IgG at 1:4000 for 1 hour at RT. Color Development: ECL solution for 5 min at RT.

Predicted/Observed Size: ~28 kDa.