

**Presenilin 1 Antibody**  
**Rabbit Anti-Human Presenilin 1 Polyclonal**  
**Catalog # ASM10583**

**Specification**

---

**Presenilin 1 Antibody - Product Information**

Application	IHC
Primary Accession	<a href="#">P49768</a>
Other Accession	<a href="#">NP_000012.1</a>
Host	Rabbit
Reactivity	Rat
Clonality	Polyclonal
Format	Presenilin 1
<b>Target/Specificity</b>	
Presenilin 1	

**Other Names**

Homo Sapiens Clone CC44 Senilin 1 Antibody, PSEN1 Antibody, PS 1 Antibody, PSNL1 Antibody, FAD Antibody, Protein S182 Antibody, Ad3h Antibody, PSN1\_HUMAN Antibody, Presenilin-1 Antibody, AD3 Antibody, PS1-CTF12 Antibody, PS-1 Antibody, PS1 Antibody, Presenilin-1 CTF12 Antibody, S182 Antibody

**Immunogen**

Synthetic peptide of Human Presenilin 1 (100-200 aa), conjugated to Keyhole Limpet Haemocyanin (KLH).

**Purification**

Peptide Affinity Purified

Storage **-20°C**

**Storage Buffer**

PBS pH 7.4, 50% glycerol, 0.09% sodium azide \*Storage buffer may change when conjugated

Shipping Temperature **Blue Ice or 4°C**

**Certificate of Analysis**

A 1:1000 dilution of SPC-734 was sufficient for detection of Presenilin 1 in 15 µg of mouse liver cell lysates by ECL immunoblot analysis using goat anti-rabbit IgG:HRP as the secondary antibody.

**Cellular Localization**

Endoplasmic Reticulum Membrane | Multi-Pass Membrane Protein | Golgi Apparatus Membrane | Multi-Pass Membrane Protein | Cell Surface | Cell Membrane

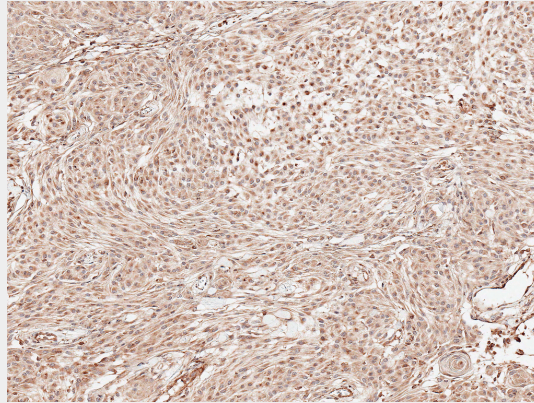
**Presenilin 1 Antibody - Protocols**

Provided below are standard protocols that you may find useful for product applications.

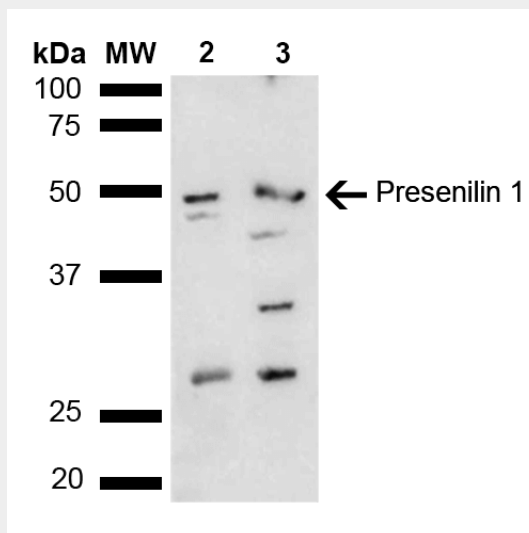
- [Western Blot](#)
- [Blocking Peptides](#)
- [Dot Blot](#)

- [Immunohistochemistry](#)
- [Immunofluorescence](#)
- [Immunoprecipitation](#)
- [Flow Cytometry](#)
- [Cell Culture](#)

**Presenilin 1 Antibody - Images**



Immunohistochemistry analysis using Rabbit Anti-Presenilin 1 Polyclonal Antibody (SPC-734). Tissue: Brain. Species: Human. Fixation: Formalin Fixed Paraffin-Embedded. Primary Antibody: Rabbit Anti-Presenilin 1 Polyclonal Antibody (SPC-734) at 1:50 for 30 min at RT. Counterstain: Hematoxylin. Magnification: 10X. | Western blot analysis of Mouse, Rat liver lysate showing detection of ~52.7 kDa Presenilin 1 protein using Rabbit Anti-Presenilin 1 Polyclonal Antibody (SPC-734). Lane 1: Molecular Weight Ladder (MW). Lane 2: Mouse liver lysate. Lane 3: Rat liver lysate. Load: 15 µg. Block: 5% Skim Milk in 1X TBST. Primary Antibody: Rabbit Anti-Presenilin 1 Polyclonal Antibody (SPC-734) at 1:1000 for 2 hours at RT. Secondary Antibody: Goat Anti-Rabbit HRP:IgG at 1:4000 for 1 hour at RT. Color Development: ECL solution for 5 min at RT. Predicted/Observed Size: ~52.7 kDa. Other Band(s): 28, 32, 42 kDa other isoforms.



Immunohistochemistry analysis using Rabbit Anti-Presenilin 1 Polyclonal Antibody (SPC-734). Tissue: Brain. Species: Human. Fixation: Formalin Fixed Paraffin-Embedded. Primary Antibody: Rabbit Anti-Presenilin 1 Polyclonal Antibody (SPC-734) at 1:50 for 30 min at RT. Counterstain: Hematoxylin. Magnification: 10X. | Western blot analysis of Mouse, Rat liver lysate showing detection of ~52.7 kDa Presenilin 1 protein using Rabbit Anti-Presenilin 1 Polyclonal Antibody (SPC-734). Lane 1: Molecular Weight Ladder (MW). Lane 2: Mouse liver lysate. Lane 3: Rat liver

lysate. Load: 15  $\mu$ g. Block: 5% Skim Milk in 1X TBST. Primary Antibody: Rabbit Anti-Presenilin 1 Polyclonal Antibody (SPC-734) at 1:1000 for 2 hours at RT. Secondary Antibody: Goat Anti-Rabbit HRP:IgG at 1:4000 for 1 hour at RT. Color Development: ECL solution for 5 min at RT. Predicted/Observed Size: ~52.7 kDa. Other Band(s): 28, 32, 42 kDa other isoforms.