

Cyclin D2 antibody
Rabbit Anti-Human Cyclin D2 Polyclonal
Catalog # ASM10582

Specification

Cyclin D2 antibody - Product Information

Application	IHC
Primary Accession	P30279
Other Accession	NP_001750.1
Host	Rabbit
Clonality	Polyclonal
Format	Cyclin D2
Target/Specificity	
Cyclin D2	

Other Names

CCND2 Antibody, ccnd2 Antibody, CCND2_HUMAN Antibody, G1/S-specific cyclin-D2 Antibody, CCND 2 Antibody, MGC102758 Antibody, CyclinD2 Antibody, G1/S specific cyclin D2 Antibody

Immunogen

Synthetic peptide from the C-terminal of Human Cyclin D2 (189-289 aa), conjugated to Keyhole Limpet Haemocyanin (KLH).

Purification

Peptide Affinity Purified

Storage **-20°C**

Storage Buffer

PBS pH 7.4, 50% glycerol, 0.09% sodium azide *Storage buffer may change when conjugated

Shipping Temperature **Blue Ice or 4°C**

Certificate of Analysis

A 1:1000 dilution of SPC-733 was sufficient for detection of Cyclin D2 in 15 µg of human HeLa cell lysates by ECL immunoblot analysis using goat anti-rabbit IgG:HRP as the secondary antibody.

Cellular Localization

Nucleus | Cytoplasm | Membrane

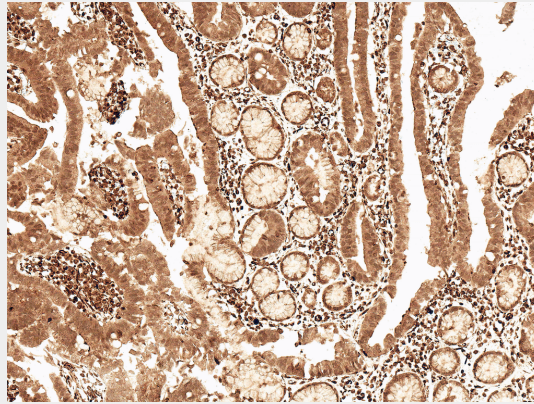
Cyclin D2 antibody - Protocols

Provided below are standard protocols that you may find useful for product applications.

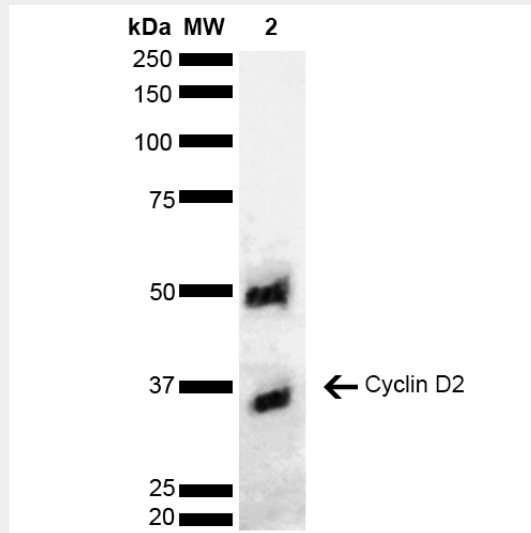
- [Western Blot](#)
- [Blocking Peptides](#)
- [Dot Blot](#)
- [Immunohistochemistry](#)
- [Immunofluorescence](#)
- [Immunoprecipitation](#)
- [Flow Cytometry](#)

- [Cell Culture](#)

Cyclin D2 antibody - Images



Immunohistochemistry analysis using Rabbit Anti-Cyclin D2 Polyclonal Antibody (SPC-733). Tissue: Stomach. Species: Human. Fixation: Formalin Fixed Paraffin-Embedded. Primary Antibody: Rabbit Anti-Cyclin D2 Polyclonal Antibody (SPC-733) at 1:50 for 30 min at RT. Counterstain: Hematoxylin. Magnification: 10X. HRP-DAB Detection. | Western blot analysis of Human Cervical cancer cell line (HeLa) lysate showing detection of ~33.1 kDa Cyclin D2 protein using Rabbit Anti-Cyclin D2 Polyclonal Antibody (SPC-733). Lane 1: Molecular Weight Ladder (MW). Lane 2: Cervical Cancer cell line (HeLa) lysate. Load: 10 μ g. Block: 5% Skim Milk in 1X TBST. Primary Antibody: Rabbit Anti-Cyclin D2 Polyclonal Antibody (SPC-733) at 1:1000 for 2 hours at RT. Secondary Antibody: Goat Anti-Rabbit HRP:IgG at 1:3000 for 1 hour at RT. Color Development: ECL solution for 5 min at RT. Predicted/Observed Size: ~33.1 kDa. Other Band(s): ~50 kDa due to post translational modifications.



Immunohistochemistry analysis using Rabbit Anti-Cyclin D2 Polyclonal Antibody (SPC-733). Tissue: Stomach. Species: Human. Fixation: Formalin Fixed Paraffin-Embedded. Primary Antibody: Rabbit Anti-Cyclin D2 Polyclonal Antibody (SPC-733) at 1:50 for 30 min at RT. Counterstain: Hematoxylin. Magnification: 10X. HRP-DAB Detection. | Western blot analysis of Human Cervical cancer cell line (HeLa) lysate showing detection of ~33.1 kDa Cyclin D2 protein using Rabbit Anti-Cyclin D2 Polyclonal Antibody (SPC-733). Lane 1: Molecular Weight Ladder (MW). Lane 2: Cervical Cancer cell line (HeLa) lysate. Load: 10 μ g. Block: 5% Skim Milk in 1X TBST. Primary Antibody: Rabbit Anti-Cyclin D2 Polyclonal Antibody (SPC-733) at 1:1000 for 2 hours at RT. Secondary Antibody: Goat Anti-Rabbit HRP:IgG at 1:3000 for 1 hour at RT. Color Development: ECL

solution for 5 min at RT. Predicted/Observed Size: ~33.1 kDa. Other Band(s): ~50 kDa due to post translational modifications.