

Cyclin D3 antibody
Rabbit Anti-Human Cyclin D3 Polyclonal
Catalog # ASM10581

Specification

Cyclin D3 antibody - Product Information

Application	IHC
Primary Accession	P30281
Other Accession	NP_001129489.1
Host	Rabbit
Reactivity	Rat
Clonality	Polyclonal
Format	Cyclin D3
Target/Specificity	
Cyclin D3	

Other Names

CCND3 Antibody, G1/S-specific cyclin-D3 Antibody, D3 type cyclin antibody, G1 S specific cyclin D3 antibody, CyclinD3 antibody, CCND 3 antibody

Immunogen

Synthetic peptide from the N-terminal of Human Cyclin D3 (1-100 aa), conjugated to Keyhole Limpet Haemocyanin (KLH).

Purification

Peptide Affinity Purified

Storage **-20°C**

Storage Buffer

PBS pH 7.4, 50% glycerol, 0.09% sodium azide *Storage buffer may change when conjugated

Shipping Temperature

Blue Ice or 4°C

Certificate of Analysis

A 1:1000 dilution of SPC-732 was sufficient for detection of Cyclin D3 in 15 µg of mouse brain cell lysates by ECL immunoblot analysis using goat anti-rabbit IgG:HRP as the secondary antibody.

Cellular Localization

Nucleus | Cytoplasm | Membrane

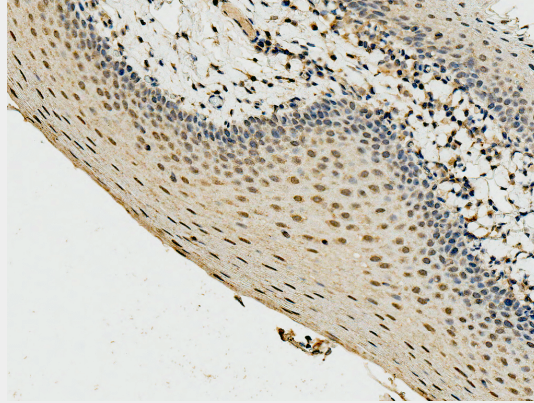
Cyclin D3 antibody - Protocols

Provided below are standard protocols that you may find useful for product applications.

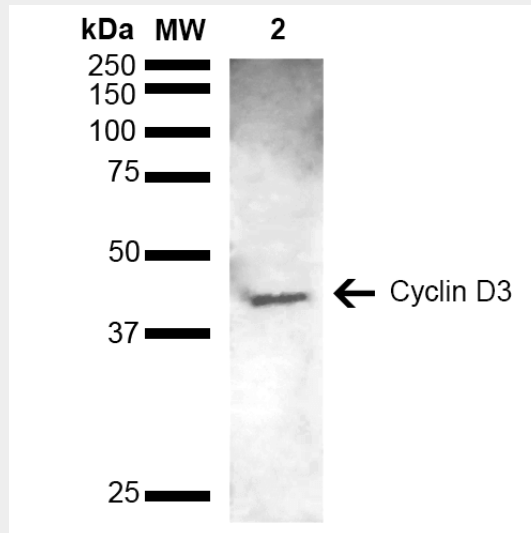
- [Western Blot](#)
- [Blocking Peptides](#)
- [Dot Blot](#)
- [Immunohistochemistry](#)
- [Immunofluorescence](#)
- [Immunoprecipitation](#)

- [Flow Cytometry](#)
- [Cell Culture](#)

Cyclin D3 antibody - Images



Immunohistochemistry analysis using Rabbit Anti-Cyclin D3 Polyclonal Antibody (SPC-732). Tissue: Tonsil. Species: Human. Fixation: Formalin Fixed Paraffin-Embedded. Primary Antibody: Rabbit Anti-Cyclin D3 Polyclonal Antibody (SPC-732) at 1:50 for 30 min at RT. Counterstain: Hematoxylin. Magnification: 20X. | Western blot analysis of Mouse brain lysate showing detection of ~32.5 kDa Cyclin D3 protein using Rabbit Anti-Cyclin D3 Polyclonal Antibody (SPC-732). Lane 1: Molecular Weight Ladder (MW). Lane 2: Mouse brain lysate. Load: 15 µg. Block: 5% Skim Milk in 1X TBST. Primary Antibody: Rabbit Anti-Cyclin D3 Polyclonal Antibody (SPC-732) at 1:1000 for 2 hours at RT. Secondary Antibody: Goat Anti-Rabbit HRP:IgG at 1:3000 for 1 hour at RT. Color Development: ECL solution for 5 min at RT. Predicted/Observed Size: ~32.5 kDa. Other Band(s): ~45 kDa due to post translational modifications.



Immunohistochemistry analysis using Rabbit Anti-Cyclin D3 Polyclonal Antibody (SPC-732). Tissue: Tonsil. Species: Human. Fixation: Formalin Fixed Paraffin-Embedded. Primary Antibody: Rabbit Anti-Cyclin D3 Polyclonal Antibody (SPC-732) at 1:50 for 30 min at RT. Counterstain: Hematoxylin. Magnification: 20X. | Western blot analysis of Mouse brain lysate showing detection of ~32.5 kDa Cyclin D3 protein using Rabbit Anti-Cyclin D3 Polyclonal Antibody (SPC-732). Lane 1: Molecular Weight Ladder (MW). Lane 2: Mouse brain lysate. Load: 15 µg. Block: 5% Skim Milk in 1X TBST. Primary Antibody: Rabbit Anti-Cyclin D3 Polyclonal Antibody (SPC-732) at 1:1000 for 2 hours at RT. Secondary Antibody: Goat Anti-Rabbit HRP:IgG at 1:3000 for 1 hour at RT. Color Development: ECL solution for 5 min at RT. Predicted/Observed Size: ~32.5 kDa. Other Band(s):

~45 kDa due to post translational modifications.