

Cyclin D1 antibody
Rabbit Anti-Human Cyclin D1 Polyclonal
Catalog # ASM10580

Specification

Cyclin D1 antibody - Product Information

Application	IHC
Primary Accession	P24385
Other Accession	NP_444284.1
Host	Rabbit
Reactivity	Rat
Clonality	Polyclonal
Format	Cyclin D1
Target/Specificity	
Cyclin D1	

Other Names

G1/S-specific cyclin-D1 Antibody, PRAD1 Antibody, BCL-1 oncogene Antibody, CCND1 Antibody, BCL1 Antibody, B-cell lymphoma 1 protein Antibody, BCL-1 Antibody, PRAD1 oncogene Antibody

Immunogen

Synthetic peptide from the N-terminal of Human Cyclin D1 (1-100 aa), conjugated to Keyhole Limpet Haemocyanin (KLH).

Purification

Peptide Affinity Purified

Storage -20°C

Storage Buffer

PBS pH 7.4, 50% glycerol, 0.09% sodium azide *Storage buffer may change when conjugated

Shipping Temperature

Blue Ice or 4°C

Certificate of Analysis

A 1:1000 dilution of SPC-731 was sufficient for detection of Cyclin D1 in 15 µg of rat brain cell lysates by ECL immunoblot analysis using goat anti-rabbit IgG:HRP as the secondary antibody.

Cellular Localization

Nucleus | Cytoplasm | Membrane

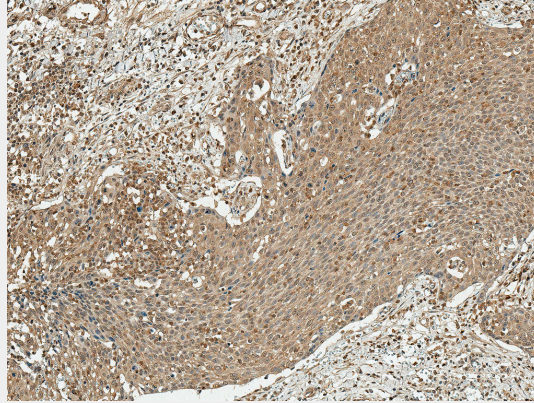
Cyclin D1 antibody - Protocols

Provided below are standard protocols that you may find useful for product applications.

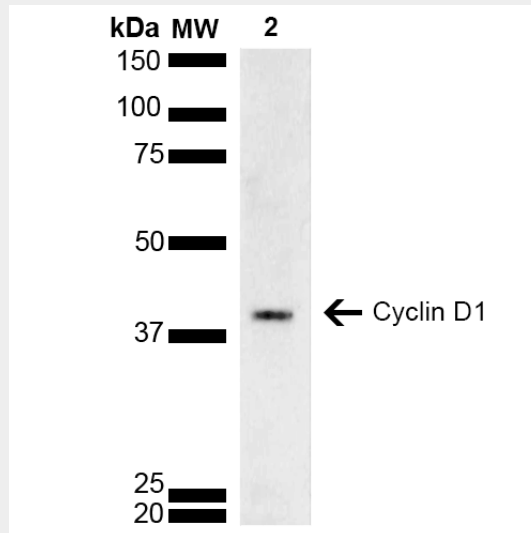
- [Western Blot](#)
- [Blocking Peptides](#)
- [Dot Blot](#)
- [Immunohistochemistry](#)
- [Immunofluorescence](#)
- [Immunoprecipitation](#)

- [Flow Cytometry](#)
- [Cell Culture](#)

Cyclin D1 antibody - Images



Immunohistochemistry analysis using Rabbit Anti-Cyclin D1 Polyclonal Antibody (SPC-731). Tissue: Esophagus. Species: Human. Fixation: Formalin Fixed Paraffin-Embedded. Primary Antibody: Rabbit Anti-Cyclin D1 Polyclonal Antibody (SPC-731) at 1:50 for 30 min at RT. Counterstain: Hematoxylin. Magnification: 10X. HRP-DAB Detection. | Western blot analysis of Rat brain lysate showing detection of ~33.7 kDa Cyclin D1 protein using Rabbit Anti-Cyclin D1 Polyclonal Antibody (SPC-731). Lane 1: Molecular Weight Ladder (MW). Lane 2: Rat brain lysate. Load: 15 µg. Block: 5% Skim Milk in 1X TBST. Primary Antibody: Rabbit Anti-Cyclin D1 Polyclonal Antibody (SPC-731) at 1:1000 for 2 hours at RT. Secondary Antibody: Goat Anti-Rabbit HRP:IgG at 1:3000 for 1 hour at RT. Color Development: ECL solution for 5 min at RT. Predicted/Observed Size: ~33.7 kDa. Other Band(s): ~40 kDa due to post translational modifications.



Immunohistochemistry analysis using Rabbit Anti-Cyclin D1 Polyclonal Antibody (SPC-731). Tissue: Esophagus. Species: Human. Fixation: Formalin Fixed Paraffin-Embedded. Primary Antibody: Rabbit Anti-Cyclin D1 Polyclonal Antibody (SPC-731) at 1:50 for 30 min at RT. Counterstain: Hematoxylin. Magnification: 10X. HRP-DAB Detection. | Western blot analysis of Rat brain lysate showing detection of ~33.7 kDa Cyclin D1 protein using Rabbit Anti-Cyclin D1 Polyclonal Antibody (SPC-731). Lane 1: Molecular Weight Ladder (MW). Lane 2: Rat brain lysate. Load: 15 µg. Block: 5% Skim Milk in 1X TBST. Primary Antibody: Rabbit Anti-Cyclin D1 Polyclonal Antibody (SPC-731) at 1:1000 for 2 hours at RT. Secondary Antibody: Goat Anti-Rabbit HRP:IgG at 1:3000 for 1 hour at RT. Color Development: ECL solution for 5 min at RT. Predicted/Observed

Size: ~33.7 kDa. Other Band(s): ~40 kDa due to post translational modifications.