

c-Jun Antibody
Rabbit Anti-Human c-Jun Polyclonal
Catalog # ASM10577

Specification

c-Jun Antibody - Product Information

Application	IHC
Primary Accession	P05412
Other Accession	NP_002219.1
Host	Rabbit
Clonality	Polyclonal
Format	c-Jun
Target/Specificity	
c-Jun	

Other Names

AP 1 Antibody, Proto-oncogene c-Jun Antibody, cJun Antibody, Enhancer Binding Protein AP1 Antibody, p39 Antibody, JUN Antibody, JUN_HUMAN Antibody, V jun avian sarcoma virus 17 oncogene homolog Antibody, Jun Activation Domain Binding Protein Antibody, JUNC Antibody, Transcription Factor AP 1 Antibody, Oncogene JUN Antibody, V-jun avian sarcoma virus 17 oncogene homolog Antibody, Jun proto oncogene Antibody, Proto oncogene c jun Antibody, Transcription Factor AP1 Antibody, V jun sarcoma virus 17 oncogene homolog Antibody, Proto-oncogene c-jun Antibody, Proto oncogene cJun Antibody, V jun sarcoma virus 17 oncogene homolog (avian) Antibody, AP1 Antibody, Activator protein 1 Antibody, JUN protein Antibody, Jun oncogene Antibody, Transcription factor AP-1 Antibody, vJun Avian Sarcoma Virus 17 Oncogene Homolog Antibody

Immunogen

Synthetic peptide of Human c-Jun (200-300 aa), conjugated to Keyhole Limpet Haemocyanin (KLH).

Purification

Peptide Affinity Purified

Storage **-20°C**

Storage Buffer

PBS pH 7.4, 50% glycerol, 0.09% sodium azide *Storage buffer may change when conjugated

Shipping Temperature

Blue Ice or 4°C

Certificate of Analysis

A 1:1000 dilution of SPC-728 was sufficient for detection of c-Jun in 15 µg of human HeLa cell lysates by ECL immunoblot analysis using goat anti-rabbit IgG:HRP as the secondary antibody.

Cellular Localization

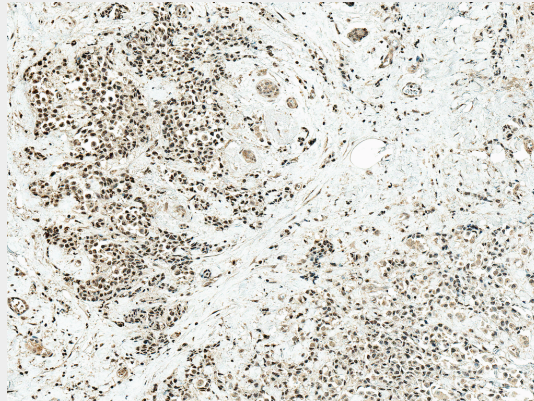
Nucleus

c-Jun Antibody - Protocols

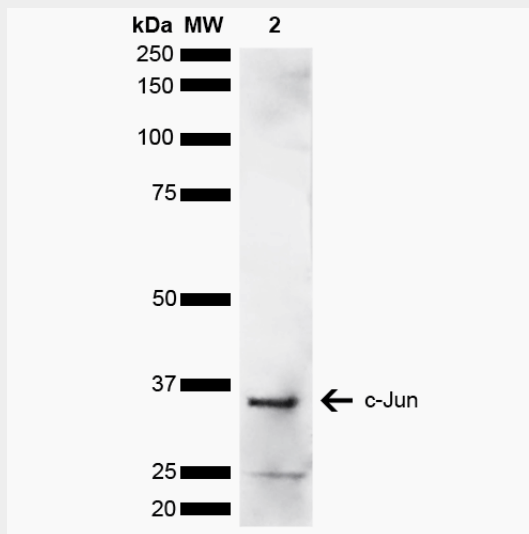
Provided below are standard protocols that you may find useful for product applications.

- [Western Blot](#)
- [Blocking Peptides](#)
- [Dot Blot](#)
- [Immunohistochemistry](#)
- [Immunofluorescence](#)
- [Immunoprecipitation](#)
- [Flow Cytometry](#)
- [Cell Culture](#)

c-Jun Antibody - Images



Immunohistochemistry analysis using Rabbit Anti-c-Jun Polyclonal Antibody (SPC-728). Tissue: Breast Cancer. Species: Human. Fixation: Formalin Fixed Paraffin-Embedded. Primary Antibody: Rabbit Anti-c-Jun Polyclonal Antibody (SPC-728) at 1:50 for 30 min at RT. Counterstain: Hematoxylin. Localization: Nucleus. Magnification: 10X. HRP-DAB Detection. | Western blot analysis of Human Cervical cancer cell line (HeLa) lysate showing detection of ~35.7 kDa c-Jun protein using Rabbit Anti-c-Jun Polyclonal Antibody (SPC-728). Lane 1: Molecular Weight Ladder (MW). Lane 2: Cervical Cancer cell line (HeLa) lysate. Load: 10 µg. Block: 5% Skim Milk in 1X TBST. Primary Antibody: Rabbit Anti-c-Jun Polyclonal Antibody (SPC-728) at 1:1000 for 2 hours at RT. Secondary Antibody: Goat Anti-Rabbit HRP:IgG at 1:3000 for 1 hour at RT. Color Development: ECL solution for 5 min at RT. Predicted/Observed Size: ~35.7 kDa. Other Band(s): ~25 kDa potential degradation product.



Immunohistochemistry analysis using Rabbit Anti-c-Jun Polyclonal Antibody (SPC-728). Tissue: Breast Cancer. Species: Human. Fixation: Formalin Fixed Paraffin-Embedded. Primary Antibody:

Rabbit Anti-c-Jun Polyclonal Antibody (SPC-728) at 1:50 for 30 min at RT. Counterstain: Hematoxylin. Localization: Nucleus. Magnification: 10X. HRP-DAB Detection. | Western blot analysis of Human Cervical cancer cell line (HeLa) lysate showing detection of ~35.7 kDa c-Jun protein using Rabbit Anti-c-Jun Polyclonal Antibody (SPC-728). Lane 1: Molecular Weight Ladder (MW). Lane 2: Cervical Cancer cell line (HeLa) lysate. Load: 10 µg. Block: 5% Skim Milk in 1X TBST. Primary Antibody: Rabbit Anti-c-Jun Polyclonal Antibody (SPC-728) at 1:1000 for 2 hours at RT. Secondary Antibody: Goat Anti-Rabbit HRP:IgG at 1:3000 for 1 hour at RT. Color Development: ECL solution for 5 min at RT. Predicted/Observed Size: ~35.7 kDa. Other Band(s): ~25 kDa potential degradation product.