

NFATC1 antibody
Rabbit Anti-Human NFATC1 Polyclonal
Catalog # ASM10576

Specification

NFATC1 antibody - Product Information

Application	IHC
Primary Accession	O95644
Other Accession	NP_001265598.1
Host	Rabbit
Reactivity	Rat
Clonality	Polyclonal
Format	NFATC1
Target/Specificity	
NFATC1	

Other Names

NFAT2 Antibody, NFATc Antibody, OR56B4 Antibody, Olfactory receptor OR11-67 Antibody, NF-ATc1 Antibody, OR11-67 Antibody, NFAT transcription complex cytosolic component Antibody, NFATc1 Antibody, NF-ATc Antibody, Nuclear factor of activated T-cells cytoplasmic 1 Antibody, NFATC Antibody, NFATC1 Antibody

Immunogen

Synthetic peptide of Human NFATC1 (110-210 aa), conjugated to Keyhole Limpet Haemocyanin (KLH).

Purification

Peptide Affinity Purified

Storage **-20°C**

Storage Buffer

PBS pH 7.4, 50% glycerol, 0.09% sodium azide *Storage buffer may change when conjugated

Shipping Temperature **Blue Ice or 4°C**

Certificate of Analysis

A 1:1000 dilution of SPC-727 was sufficient for detection of NFATC1 in 15 µg of rat brain cell lysates by ECL immunoblot analysis using goat anti-rabbit IgG:HRP as the secondary antibody.

Cellular Localization

Cytoplasm | Nucleus

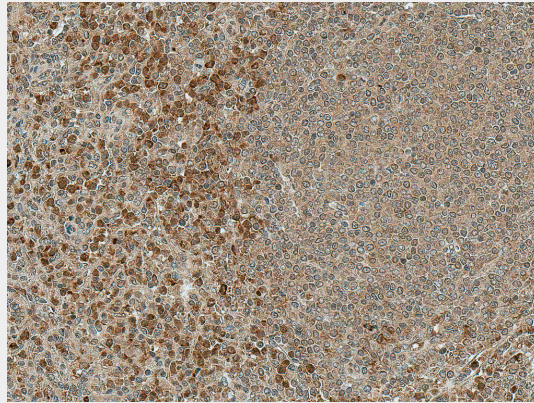
NFATC1 antibody - Protocols

Provided below are standard protocols that you may find useful for product applications.

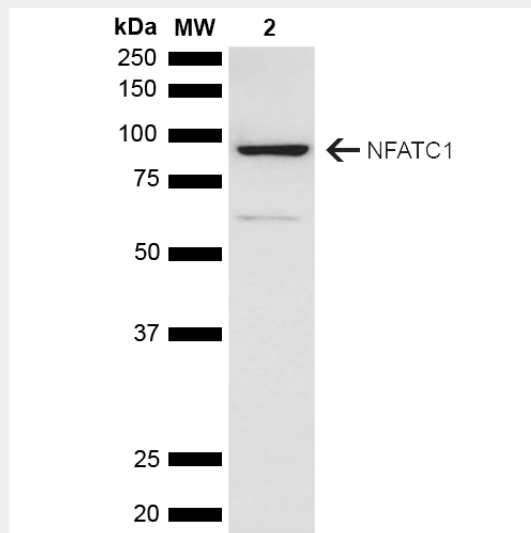
- [Western Blot](#)
- [Blocking Peptides](#)
- [Dot Blot](#)
- [Immunohistochemistry](#)

- [Immunofluorescence](#)
- [Immunoprecipitation](#)
- [Flow Cytometry](#)
- [Cell Culture](#)

NFATC1 antibody - Images



Immunohistochemistry analysis using Rabbit Anti-NFATC1 Polyclonal Antibody (SPC-727). Tissue: Spleen. Species: Human. Fixation: Formalin Fixed Paraffin-Embedded. Primary Antibody: Rabbit Anti-NFATC1 Polyclonal Antibody (SPC-727) at 1:50 for 30 min at RT. Counterstain: Hematoxylin. Magnification: 10X. | Western blot analysis of Rat brain lysate showing detection of ~101.2 kDa NFATC1 protein using Rabbit Anti-NFATC1 Polyclonal Antibody (SPC-727). Lane 1: Molecular Weight Ladder (MW). Lane 2: Rat brain lysate. Load: 15 µg. Block: 5% Skim Milk in 1X TBST. Primary Antibody: Rabbit Anti-NFATC1 Polyclonal Antibody (SPC-727) at 1:1000 for 2 hours at RT. Secondary Antibody: Goat Anti-Rabbit HRP:IgG at 1:3000 for 1 hour at RT. Color Development: ECL solution for 5 min at RT. Predicted/Observed Size: ~101.2 kDa. Other Band(s): ~60 kDa isoform.



Immunohistochemistry analysis using Rabbit Anti-NFATC1 Polyclonal Antibody (SPC-727). Tissue: Spleen. Species: Human. Fixation: Formalin Fixed Paraffin-Embedded. Primary Antibody: Rabbit Anti-NFATC1 Polyclonal Antibody (SPC-727) at 1:50 for 30 min at RT. Counterstain: Hematoxylin. Magnification: 10X. | Western blot analysis of Rat brain lysate showing detection of ~101.2 kDa NFATC1 protein using Rabbit Anti-NFATC1 Polyclonal Antibody (SPC-727). Lane 1: Molecular Weight Ladder (MW). Lane 2: Rat brain lysate. Load: 15 µg. Block: 5% Skim Milk in 1X TBST. Primary Antibody: Rabbit Anti-NFATC1 Polyclonal Antibody (SPC-727) at 1:1000 for 2 hours at RT. Secondary Antibody: Goat Anti-Rabbit HRP:IgG at 1:3000 for 1 hour at RT. Color Development: ECL

solution for 5 min at RT. Predicted/Observed Size: ~101.2 kDa. Other Band(s): ~60 kDa isoform.