

**c-Myc Antibody**  
**Rabbit Anti-Human c-Myc Polyclonal**  
**Catalog # ASM10575**

**Specification**

---

**c-Myc Antibody - Product Information**

Application	IHC
Primary Accession	<a href="#">P01106</a>
Other Accession	<a href="#">NP_002458.2</a>
Host	Rabbit
Clonality	Polyclonal
Format	c-Myc
<b>Target/Specificity</b>	
c-Myc	

**Other Names**

Phosphatidylinositol 3 kinase catalytic beta polypeptide Antibody, PIK3C1 Antibody, Phosphatidylinositol-4 Antibody, bHLHe39 Antibody, PI3Kbeta Antibody, PtdIns-3-kinase subunit p110-beta Antibody, p110 BETA Antibody, Phosphatidylinositol 4 5 bisphosphate 3 kinase catalytic subunit beta isoform Antibody, OTTHUMP00000216901 Antibody, PK3CB\_HUMAN Antibody, PI3K-beta Antibody, PI3K beta Antibody, p110Beta Antibody, Class E basic helix-loop-helix protein 39 Antibody, Proto-oncogene c-Myc Antibody, PI3-kinase subunit beta Antibody, OTTHUMP00000216904 Antibody, PI3KCB Antibody, Phosphatidylinositol 4 5 bisphosphate 3 kinase 110 kDa catalytic subunit beta Antibody, Pik3cb Antibody, MGC133043 Antibody, 5-bisphosphate 3-kinase catalytic subunit beta isoform Antibody, PI3 kinase p110 subunit beta Antibody, PI3K Antibody, Transcription factor p64 Antibody, DKFZp779K1237 Antibody, MYC Antibody, BHLHE39 Antibody, PtdIns-3-kinase subunit beta Antibody, Phosphoinositide 3 kinase catalytic beta polypeptide Antibody, Myc proto-oncogene protein Antibody, PtdIns 3 kinase p110 Antibody, 5-bisphosphate 3-kinase 110 kDa catalytic subunit beta Antibody

**Immunogen**

Synthetic peptide of Human c-Myc (220-320 aa), conjugated to Keyhole Limpet Haemocyanin (KLH).

**Purification**

Peptide Affinity Purified

Storage **-20°C**

**Storage Buffer**

PBS pH 7.4, 50% glycerol, 0.09% sodium azide \*Storage buffer may change when conjugated

Shipping Temperature

**Blue Ice or 4°C**

**Certificate of Analysis**

A 1:1000 dilution of SPC-726 was sufficient for detection of c-Myc in 15 µg of human HeLa cell lysates by ECL immunoblot analysis using goat anti-rabbit IgG:HRP as the secondary antibody.

**Cellular Localization**

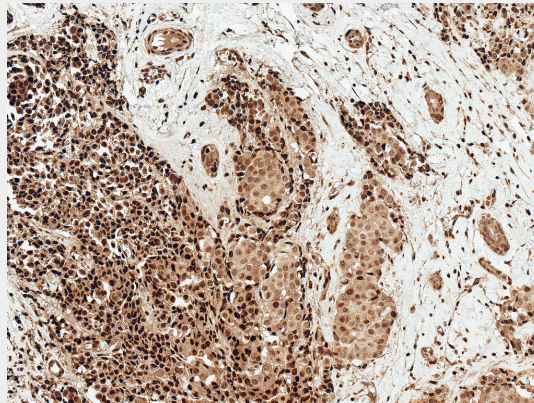
Nucleus | Nucleoplasm | Nucleus | Nucleolus

**c-Myc Antibody - Protocols**

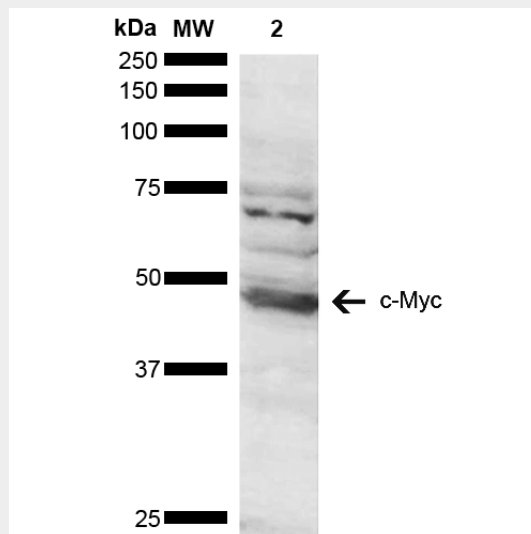
Provided below are standard protocols that you may find useful for product applications.

- [Western Blot](#)
- [Blocking Peptides](#)
- [Dot Blot](#)
- [Immunohistochemistry](#)
- [Immunofluorescence](#)
- [Immunoprecipitation](#)
- [Flow Cytometry](#)
- [Cell Culture](#)

**c-Myc Antibody - Images**



Immunohistochemistry analysis using Rabbit Anti-c-Myc Polyclonal Antibody (SPC-726). Tissue: Breast Cancer. Species: Human. Fixation: Formalin Fixed Paraffin-Embedded. Primary Antibody: Rabbit Anti-c-Myc Polyclonal Antibody (SPC-726) at 1:50 for 30 min at RT. Counterstain: Hematoxylin. Magnification: 10X. HRP-DAB Detection. | Western blot analysis of Human Cervical cancer cell line (HeLa) lysate showing detection of ~48.8 kDa c-Myc protein using Rabbit Anti-c-Myc Polyclonal Antibody (SPC-726). Lane 1: Molecular Weight Ladder (MW). Lane 2: Cervical Cancer cell line (HeLa) lysate. Load: 10 µg. Block: 5% Skim Milk in 1X TBST. Primary Antibody: Rabbit Anti-c-Myc Polyclonal Antibody (SPC-726) at 1:1000 for 2 hours at RT. Secondary Antibody: Goat Anti-Rabbit HRP: IgG at 1:3000 for 1 hour at RT. Color Development: ECL solution for 5 min at RT. Predicted/Observed Size: ~48.8 kDa. Other Band(s): due to post translational modifications.



Immunohistochemistry analysis using Rabbit Anti-c-Myc Polyclonal Antibody (SPC-726). Tissue:

Breast Cancer. Species: Human. Fixation: Formalin Fixed Paraffin-Embedded. Primary Antibody: Rabbit Anti-c-Myc Polyclonal Antibody (SPC-726) at 1:50 for 30 min at RT. Counterstain: Hematoxylin. Magnification: 10X. HRP-DAB Detection. | Western blot analysis of Human Cervical cancer cell line (HeLa) lysate showing detection of ~48.8 kDa c-Myc protein using Rabbit Anti-c-Myc Polyclonal Antibody (SPC-726). Lane 1: Molecular Weight Ladder (MW). Lane 2: Cervical Cancer cell line (HeLa) lysate. Load: 10 µg. Block: 5% Skim Milk in 1X TBST. Primary Antibody: Rabbit Anti-c-Myc Polyclonal Antibody (SPC-726) at 1:1000 for 2 hours at RT. Secondary Antibody: Goat Anti-Rabbit HRP:IgG at 1:3000 for 1 hour at RT. Color Development: ECL solution for 5 min at RT. Predicted/Observed Size: ~48.8 kDa. Other Band(s): due to post translational modifications.