

TCF4 Antibody
Rabbit Anti-Human TCF4 Polyclonal
Catalog # ASM10572**Specification**

TCF4 Antibody - Product Information

Application	IHC
Primary Accession	P15884
Other Accession	NP_001077431.1
Host	Rabbit
Clonality	Polyclonal
Format	TCF4
Target/Specificity	
TCF4	

Other Names

TCF-4 Antibody, MGC149723 Antibody, PTHS Antibody, Class B basic helix-loop-helix protein 19 Antibody, bHLHb19 Antibody, SEF 2 Antibody, SL3 3 enhancer factor 2 Antibody, SEF2 1 Antibody, ITF-2 Antibody, E2 2 Antibody, SEF2 1A Antibody, BHLHB19 Antibody, MGC149724 Antibody, ITF 2 Antibody, Transcription factor 4 Antibody, TCF 4 Antibody, TCF4 Antibody, SEF-2 Antibody, SEF2 1B Antibody, Immunoglobulin transcription factor 2 Antibody, SL3-3 enhancer factor 2 Antibody, SEF2 Antibody, ITF2 Antibody, ITF2_HUMAN Antibody

Immunogen

Synthetic peptide from the C-terminal of Human TCF4 (500-600 aa), conjugated to Keyhole Limpet Haemocyanin (KLH).

Purification

Peptide Affinity Purified

Storage **-20°C**

Storage Buffer

PBS pH 7.4, 50% glycerol, 0.09% sodium azide *Storage buffer may change when conjugated

Shipping Temperature

Blue Ice or 4°C

Certificate of Analysis

A 1:1000 dilution of SPC-723 was sufficient for detection of TCF4 in 15 µg of mouse liver cell lysates by ECL immunoblot analysis using goat anti-rabbit IgG:HRP as the secondary antibody.

Cellular Localization

Nucleus

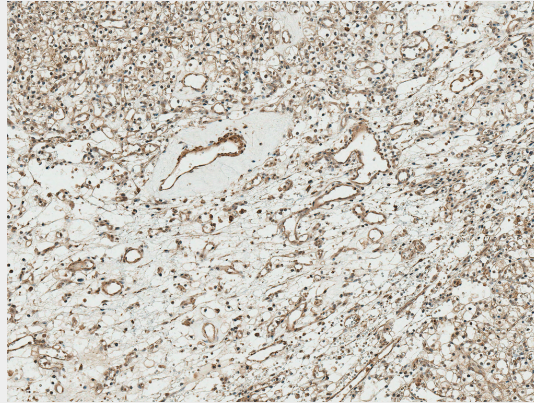
TCF4 Antibody - Protocols

Provided below are standard protocols that you may find useful for product applications.

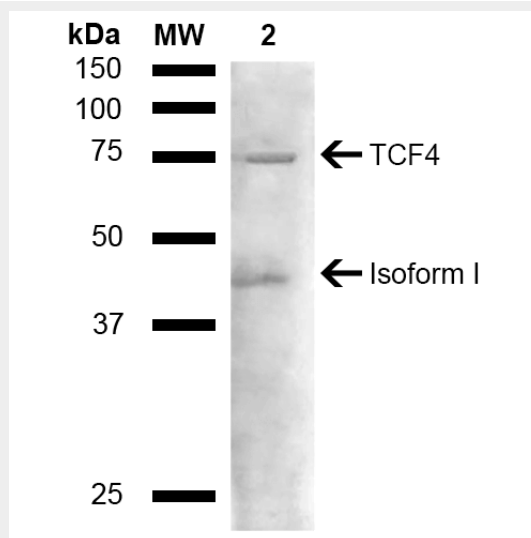
- [Western Blot](#)
- [Blocking Peptides](#)
- [Dot Blot](#)

- [Immunohistochemistry](#)
- [Immunofluorescence](#)
- [Immunoprecipitation](#)
- [Flow Cytometry](#)
- [Cell Culture](#)

TCF4 Antibody - Images



Immunohistochemistry analysis using Rabbit Anti-TCF4 Polyclonal Antibody (SPC-723). Tissue: Kidney. Species: Human. Fixation: Formalin Fixed Paraffin-Embedded. Primary Antibody: Rabbit Anti-TCF4 Polyclonal Antibody (SPC-723) at 1:50 for 30 min at RT. Counterstain: Hematoxylin. Magnification: 10X. HRP-DAB Detection. | Western blot analysis of Mouse liver lysate showing detection of ~71.3 kDa TCF4 protein using Rabbit Anti-TCF4 Polyclonal Antibody (SPC-723). Lane 1: Molecular Weight Ladder (MW). Lane 2: Mouse liver lysate. Load: 15 µg. Block: 5% Skim Milk in 1X TBST. Primary Antibody: Rabbit Anti-TCF4 Polyclonal Antibody (SPC-723) at 1:1000 for 2 hours at RT. Secondary Antibody: Goat Anti-Rabbit HRP:IgG at 1:3000 for 1 hour at RT. Color Development: ECL solution for 5 min at RT. Predicted/Observed Size: ~71.3 kDa. Other Band(s): ~45 kDa isoform.



Immunohistochemistry analysis using Rabbit Anti-TCF4 Polyclonal Antibody (SPC-723). Tissue: Kidney. Species: Human. Fixation: Formalin Fixed Paraffin-Embedded. Primary Antibody: Rabbit Anti-TCF4 Polyclonal Antibody (SPC-723) at 1:50 for 30 min at RT. Counterstain: Hematoxylin. Magnification: 10X. HRP-DAB Detection. | Western blot analysis of Mouse liver lysate showing detection of ~71.3 kDa TCF4 protein using Rabbit Anti-TCF4 Polyclonal Antibody (SPC-723). Lane 1: Molecular Weight Ladder (MW). Lane 2: Mouse liver lysate. Load: 15 µg. Block: 5% Skim Milk in

1X TBST. Primary Antibody: Rabbit Anti-TCF4 Polyclonal Antibody (SPC-723) at 1:1000 for 2 hours at RT. Secondary Antibody: Goat Anti-Rabbit HRP:IgG at 1:3000 for 1 hour at RT. Color Development: ECL solution for 5 min at RT. Predicted/Observed Size: ~71.3 kDa. Other Band(s): ~45 kDa isoform.