

Axin 1 Antibody
Rabbit Anti-Human Axin 1 Polyclonal
Catalog # ASM10570

Specification

Axin 1 Antibody - Product Information

Application	WB
Primary Accession	O15169
Other Accession	NP_003493.1
Host	Rabbit
Clonality	Polyclonal
Format	Axin 1
Target/Specificity	
Axin 1	

Other Names

AXIN1 Antibody, hAxin Antibody, Axin-1 Antibody, Axis inhibition protein 1 Antibody, AXIN Antibody, Escherichia coli O119 Antibody

Immunogen

Synthetic peptide of Human Axin 1 (200-300 aa), conjugated to Keyhole Limpet Haemocyanin (KLH).

Purification

Peptide Affinity Purified

Storage **-20°C**

Storage Buffer

PBS pH 7.4, 50% glycerol, 0.09% sodium azide *Storage buffer may change when conjugated

Shipping Temperature **Blue Ice or 4°C**

Certificate of Analysis

A 1:1000 dilution of SPC-721 was sufficient for detection of Axin 1 in 15 µg of mouse kidney cell lysates by ECL immunoblot analysis using goat anti-rabbit IgG:HRP as the secondary antibody.

Cellular Localization

Cytoplasm | Nucleus | Membrane | Cell Membrane

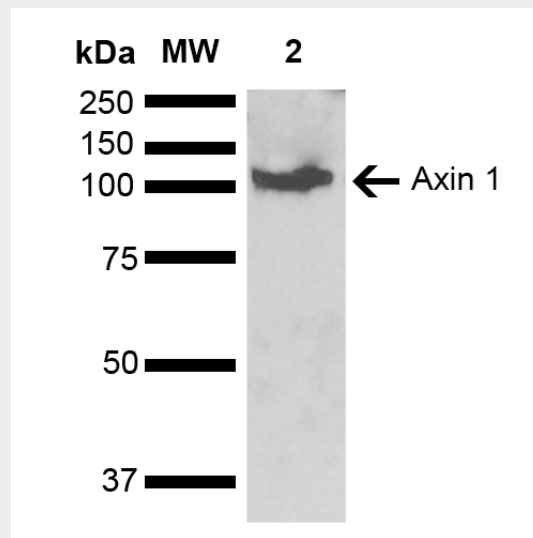
Axin 1 Antibody - Protocols

Provided below are standard protocols that you may find useful for product applications.

- [Western Blot](#)
- [Blocking Peptides](#)
- [Dot Blot](#)
- [Immunohistochemistry](#)
- [Immunofluorescence](#)
- [Immunoprecipitation](#)
- [Flow Cytometry](#)

- [Cell Culture](#)

Axin 1 Antibody - Images



Western blot analysis of Mouse kidney lysate showing detection of ~95.6 kDa Axin 1 protein using Rabbit Anti-Axin 1 Polyclonal Antibody (SPC-721). Lane 1: Molecular Weight Ladder (MW). Lane 2: Mouse kidney lysate. Load: 15 μ g. Block: 5% Skim Milk in 1X TBST. Primary Antibody: Rabbit Anti-Axin 1 Polyclonal Antibody (SPC-721) at 1:1000 for 2 hours at RT. Secondary Antibody: Goat Anti-Rabbit HRP:IgG at 1:3000 for 1 hour at RT. Color Development: ECL solution for 5 min at RT. Predicted/Observed Size: ~95.6 kDa.