

**Metallothionein Antibody**  
Catalog # ASM10567

**Specification**

---

**Metallothionein Antibody - Product Information**

Application	<b>WB</b>
Primary Accession	<a href="#">O911X5</a>
Host	<b>Rabbit</b>
Reactivity	<b>P. aeruginosa</b>
Clonality	<b>Polyclonal</b>

**Description**

Rabbit Anti-Pseudomonas aeruginosa Metallothionein Polyclonal

**Target/Specificity**

Detects ~36 kDa.

**Other Names**

CES 1 antibody, CES1 antibody, Metallothionein 1A antibody, Metallothionein 1S antibody, Metallothionein 2 antibody, Metallothionein 2A antibody, Metallothionein IA antibody, Metallothionein II antibody, Metallothionein-1A antibody, Metallothionein-IA antibody, Metallothionein2 antibody, MGC32848 antibody, MT 1A antibody, MT 2 antibody, MT 2A antibody, MT IA antibody, MT II antibody, MT-1A antibody, MT-IA antibody, MT1 antibody, MT1A antibody, MT1A\_HUMAN antibody, MT1S antibody, MT2 antibody, MT2A antibody, MTC antibody, Probable Metallothionein Antibody

**Immunogen**

Synthetic peptide from the mid-protein of Pseudomonas aeruginosa Metallothionein

**Purification**

Peptide Affinity Purified

Storage **-20°C**

**Storage Buffer**

PBS, 50% glycerol, 0.09% sodium azide

Shipping Temperature **Blue Ice or 4°C**

**Certificate of Analysis**

A 1:1000 dilution of SPC-717 was sufficient for detection of Metallothionein in 15 µg of pseudomonas aeruginosa purified Metallothionein (pmtA-GST) protein by ECL immunoblot analysis using goat anti-rabbit IgG:HRP as the secondary antibody.

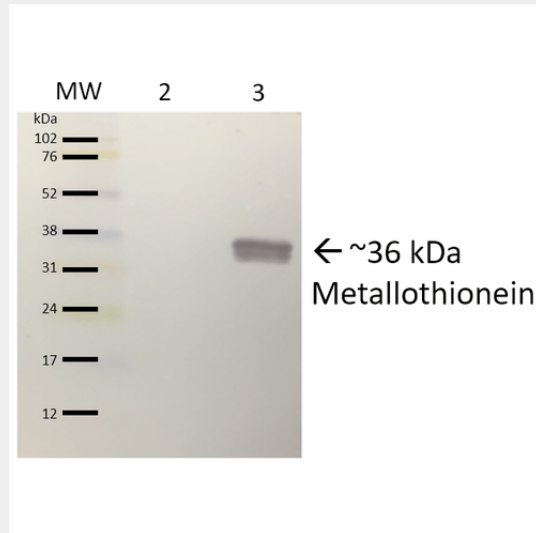
**Metallothionein Antibody - Protocols**

Provided below are standard protocols that you may find useful for product applications.

- [Western Blot](#)
- [Blocking Peptides](#)
- [Dot Blot](#)
- [Immunohistochemistry](#)

- [Immunofluorescence](#)
- [Immunoprecipitation](#)
- [Flow Cytometry](#)
- [Cell Culture](#)

### Metallothionein Antibody - Images



Western blot analysis of *Pseudomonas aeruginosa* Purified protein showing detection of ~36 kDa (9.07 kDa Metallothionein and 26.4 kDa GST) Metallothionein protein using Rabbit Anti-Metallothionein Polyclonal Antibody (ASM10567). Lane 1: Molecular Weight Ladder (MW). Lane 2: Blank. Lane 3: *Pseudomonas aeruginosa* purified protein with GST tag.. Load: 25  $\mu$ g. Block: 1% milk, 2% BSA. Primary Antibody: Rabbit Anti-Metallothionein Polyclonal Antibody (ASM10567) at 1:1000 for 16 hours at 4°C. Secondary Antibody: Mouse Anti-Rabbit IgG: AP at 1:1000 for 60 min at RT. Color Development: Alkaline phosphate activity colorimetric assay. Predicted/Observed Size: ~36 kDa (9.07 kDa Metallothionein and 26.4 kDa GST). Courtesy of: Michael Lynes and Amy Thees, University of Connecticut.