

HSF2 Antibody
Catalog # ASM10565

Specification

HSF2 Antibody - Product Information

Application	WB
Primary Accession	Q03933
Other Accession	NP_001129036.1
Host	Rabbit
Reactivity	Rat
Clonality	Polyclonal

Description

Rabbit Anti-Human HSF2 Polyclonal

Target/Specificity

Detects ~90 kDa.

Other Names

Heat shock factor protein 2 Antibody, Heat shock transcription factor 2 Antibody, HSTF 2 Antibody, HSTF2 Antibody, HSF 2 Antibody, HSF2 Antibody, HSF2_HUMAN Antibody

Immunogen

Synthetic peptide from the mid-protein of Human HSF2

Purification

Peptide Affinity Purified

Storage **-20°C**

Storage Buffer

PBS, 50% glycerol, 0.09% sodium azide

Shipping Temperature **Blue Ice or 4°C**

Certificate of Analysis

A 1:1000 dilution of SPC-712 was sufficient for detection of HSF2 in 15 µg of rat liver cell lysates by ECL immunoblot analysis using goat anti-rabbit IgG:HRP as the secondary antibody.

Cellular Localization

Cytoplasm | Nucleus

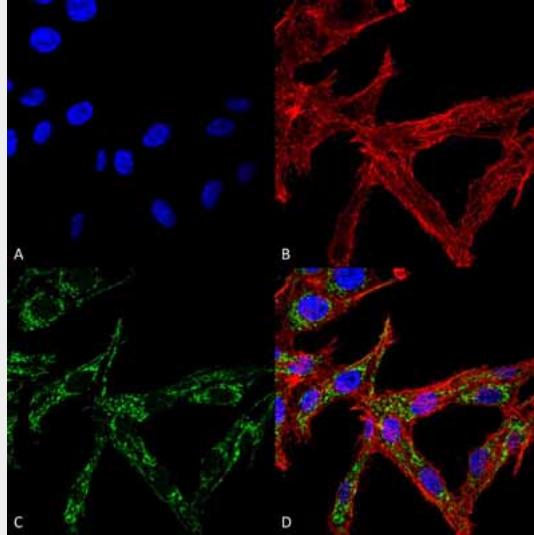
HSF2 Antibody - Protocols

Provided below are standard protocols that you may find useful for product applications.

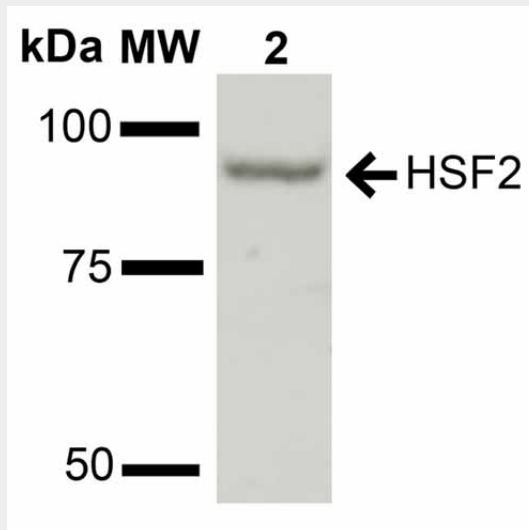
- [Western Blot](#)
- [Blocking Peptides](#)
- [Dot Blot](#)
- [Immunohistochemistry](#)
- [Immunofluorescence](#)
- [Immunoprecipitation](#)

- [Flow Cytometry](#)
- [Cell Culture](#)

HSF2 Antibody - Images



Immunocytochemistry/Immunofluorescence analysis using Rabbit Anti-HSF2 Polyclonal Antibody (ASM10565). Tissue: Colon carcinoma cell line (RKO). Species: Human. Fixation: 4% Formaldehyde for 15 min at RT. Primary Antibody: Rabbit Anti-HSF2 Polyclonal Antibody (ASM10565) at 1:100 for 60 min at RT. Secondary Antibody: Goat Anti-Rabbit ATTO 488 at 1:100 for 60 min at RT. Counterstain: Phalloidin Texas Red F-Actin stain; DAPI (blue) nuclear stain at 1:1000, 1:5000 for 60 min at RT, 5 min at RT. Localization: Cytoplasmic. Magnification: 60X. (A) DAPI nuclear stain. (B) Phalloidin Texas Red F-Actin stain. (C) HSF2 Antibody. (D) Composite.



Western blot analysis of Rat Liver cell lysates showing detection of ~60.3 kDa HSF2 protein using Rabbit Anti-HSF2 Polyclonal Antibody (ASM10565). Lane 1: Molecular Weight Ladder (MW). Lane 2: Rat Liver cell lysates. Load: 15 µg. Block: 5% Skim Milk in 1X TBST. Primary Antibody: Rabbit Anti-HSF2 Polyclonal Antibody (ASM10565) at 1:1000 for 2 hours at RT. Secondary Antibody: Goat Anti-Rabbit IgG: HRP at 1:2000 for 60 min at RT. Color Development: ECL solution for 6 min in RT. Predicted/Observed Size: ~60.3 kDa.