

IGF-1 Antibody
Catalog # ASM10555

Specification

IGF-1 Antibody - Product Information

Application	WB
Primary Accession	P05019
Other Accession	NP_000609.1
Host	Rabbit
Reactivity	Human, Mouse
Clonality	Polyclonal

Description

Rabbit Anti-Human IGF-1 Polyclonal

Target/Specificity

Detects ~25 kDa.

Other Names

Insulin-like growth factor 1 Antibody, Igf1 Antibody, IGF-I Antibody, Insulin like growth factor 1 (somatomedin C) Antibody, IGF1_HUMAN Antibody, Somatomedin-C Antibody, MGF Antibody, OTTHUMP00000195083 Antibody, Somatomedia C Antibody, Mechano growth factor Antibody, Insulin like growth factor 1 Antibody, Insulin like growth factor IA Antibody, IGF IB Antibody, IBP1 Antibody, IGF1 Antibody, Insulin-like growth factor I Antibody, IGF IA Antibody, Somatomedin C Antibody, IGF1A Antibody, IGFI Antibody, IGFI A Antibody, IGF I Antibody, Insulin like growth factor IB Antibody, IGF 1 Antibody, IGF I Antibody

Immunogen

Synthetic peptide from the mid-protein of Human IGF-1

Purification

Peptide Affinity Purified

Storage **-20°C**

Storage Buffer

PBS, 50% glycerol, 0.09% sodium azide

Shipping Temperature

Blue Ice or 4°C

Certificate of Analysis

A 1:1000 dilution of SPC-699 was sufficient for detection of IGF-1 in 15 µg of mouse liver cell lysates by ECL immunoblot analysis using goat anti-rabbit IgG:HRP as the secondary antibody.

Cellular Localization

Secreted

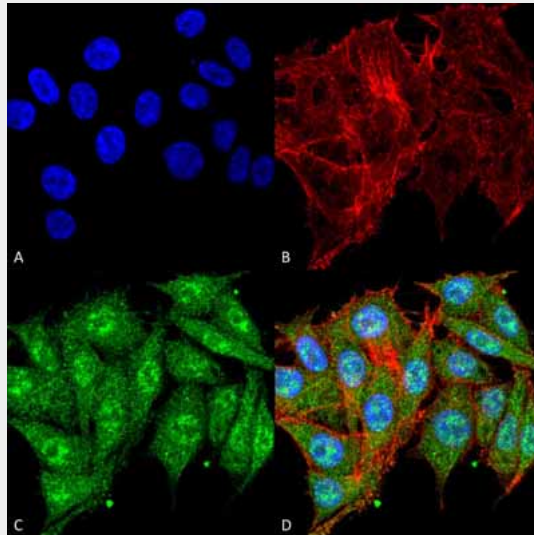
IGF-1 Antibody - Protocols

Provided below are standard protocols that you may find useful for product applications.

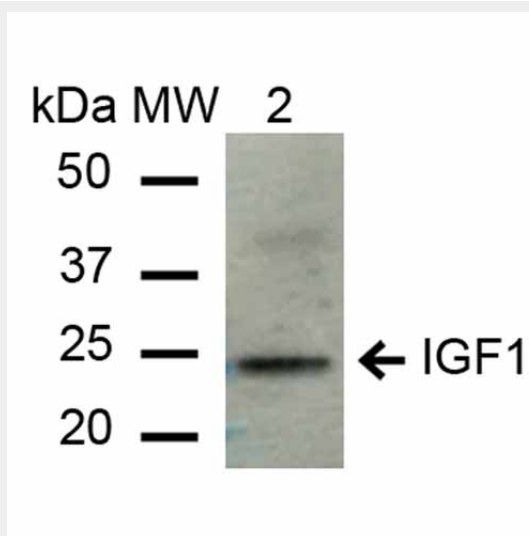
- [Western Blot](#)

- [Blocking Peptides](#)
- [Dot Blot](#)
- [Immunohistochemistry](#)
- [Immunofluorescence](#)
- [Immunoprecipitation](#)
- [Flow Cytometry](#)
- [Cell Culture](#)

IGF-1 Antibody - Images



Immunocytochemistry/Immunofluorescence analysis using Rabbit Anti-IGF-1 Polyclonal Antibody (ASM10555). Tissue: Colon carcinoma cell line (RKO). Species: Human. Fixation: 4% Formaldehyde for 15 min at RT. Primary Antibody: Rabbit Anti-IGF-1 Polyclonal Antibody (ASM10555) at 1:100 for 60 min at RT. Secondary Antibody: Goat Anti-Rabbit ATTO 488 at 1:100 for 60 min at RT. Counterstain: Phalloidin Texas Red F-Actin stain; DAPI (blue) nuclear stain at 1:1000, 1:5000 for 60 min at RT, 5 min at RT. Localization: Cytoplasm. Magnification: 60X. (A) DAPI nuclear stain. (B) Phalloidin Texas Red F-Actin stain. (C) IGF-1 Antibody. (D) Composite.



Western blot analysis of Mouse Liver cell lysates showing detection of ~21.8 kDa IGF-1 protein using Rabbit Anti-IGF-1 Polyclonal Antibody (ASM10555). Lane 1: Molecular Weight Ladder (MW). Lane 2: Mouse Liver cell lysates. Load: 15 µg. Block: 5% Skim Milk in 1X TBST. Primary Antibody:

Rabbit Anti-IGF-1 Polyclonal Antibody (ASM10555) at 1:1000 for 2 hours at RT. Secondary Antibody: Goat Anti-Rabbit IgG: HRP at 1:2000 for 60 min at RT. Color Development: ECL solution for 6 min in RT. Predicted/Observed Size: ~21.8 kDa.