

**GAPDH Antibody**  
Catalog # ASM10549

**Specification**

---

**GAPDH Antibody - Product Information**

Application	<b>WB</b>
Primary Accession	<a href="#">P04406</a>
Other Accession	<a href="#">NP_001243728.1</a>
Host	<b>Rabbit</b>
Reactivity	<b>Human</b>
Clonality	<b>Polyclonal</b>

**Description**

Rabbit Anti-Human GAPDH Polyclonal

**Target/Specificity**

Detects ~36 kDa.

**Other Names**

CDABP0047 Antibody, GAPD Antibody, GAPDH Antibody, OK/SW-cl.12 Antibody, Peptidyl-cysteine S-nitrosylase GAPDH Antibody, Glyceraldehyde-3-phosphate dehydrogenase Antibody

**Immunogen**

Synthetic peptide from the mid-protein of Human GAPDH

**Purification**

Peptide Affinity Purified

Storage **-20°C**

**Storage Buffer**

PBS, 50% glycerol, 0.09% sodium azide

Shipping Temperature **Blue Ice or 4°C**

**Certificate of Analysis**

A 1:1000 dilution of SPC-689 was sufficient for detection of GAPDH in 15 µg of human HeLa cell lysates by ECL immunoblot analysis using goat anti-rabbit IgG:HRP as the secondary antibody.

**Cellular Localization**

Cytoplasm | Cytosol | Nucleus | Cytoplasm | Perinuclear Region | Membrane | Cytoplasm | Cytoskeleton

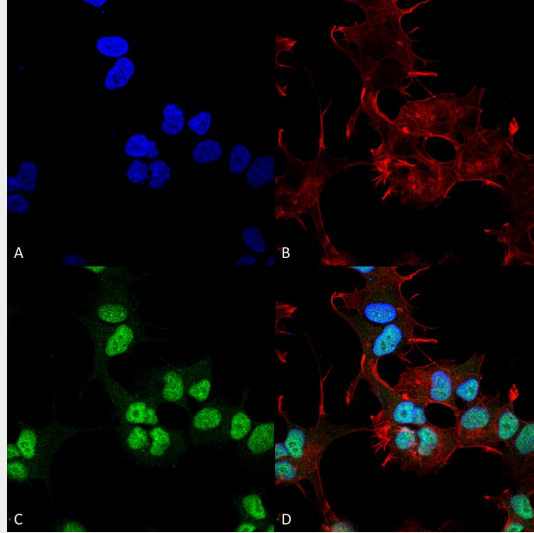
**GAPDH Antibody - Protocols**

Provided below are standard protocols that you may find useful for product applications.

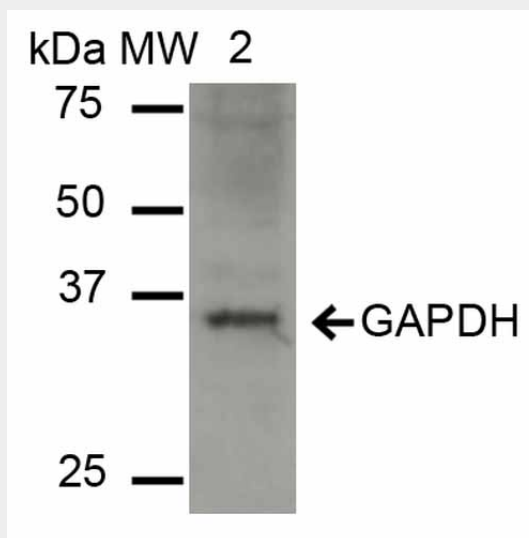
- [Western Blot](#)
- [Blocking Peptides](#)
- [Dot Blot](#)
- [Immunohistochemistry](#)
- [Immunofluorescence](#)

- [Immunoprecipitation](#)
- [Flow Cytometry](#)
- [Cell Culture](#)

**GAPDH Antibody - Images**



Immunocytochemistry/Immunofluorescence analysis using Rabbit Anti-GAPDH Polyclonal Antibody (ASM10549). Tissue: Neuroblastoma cell line (SK-N-BE). Species: Human. Fixation: 4% Formaldehyde for 15 min at RT. Primary Antibody: Rabbit Anti-GAPDH Polyclonal Antibody (ASM10549) at 1:100 for 60 min at RT. Secondary Antibody: Goat Anti-Rabbit ATTO 488 at 1:100 for 60 min at RT. Counterstain: Phalloidin Texas Red F-Actin stain; DAPI (blue) nuclear stain at 1:1000, 1:5000 for 60 min at RT, 5 min at RT. Localization: Nucleus, Cytoplasm. Magnification: 60X. (A) DAPI nuclear stain. (B) Phalloidin Texas Red F-Actin stain. (C) GAPDH Antibody. (D) Composite.



Western blot analysis of Human HeLa cell lysates showing detection of ~36 kDa GAPDH protein using Rabbit Anti-GAPDH Polyclonal Antibody (ASM10549). Lane 1: Molecular Weight Ladder (MW). Lane 2: HeLa cell lysates. Load: 15 µg. Block: 5% Skim Milk in 1X TBST. Primary Antibody: Rabbit Anti-GAPDH Polyclonal Antibody (ASM10549) at 1:1000 for 2 hours at RT. Secondary Antibody: Goat Anti-Rabbit IgG: HRP at 1:2000 for 60 min at RT. Color Development: ECL solution for 6 min in RT. Predicted/Observed Size: ~36 kDa.