

RAB1B Antibody
Catalog # ASM10544

Specification

RAB1B Antibody - Product Information

| | |
|-------------------|-----------------------------|
| Application | WB |
| Primary Accession | O9H0U4 |
| Other Accession | NP_112243.1 |
| Host | Rabbit |
| Reactivity | Human, Rat |
| Clonality | Polyclonal |

Description

Rabbit Anti-Human RAB1B Polyclonal

Target/Specificity

Detects ~48 kDa.

Other Names

Ras-related protein Rab-1B Antibody, RAB1B Antibody

Immunogen

Synthetic peptide from the C-terminal of Human RAB1B (aa. 179-189)

Purification

Peptide Affinity Purified

Storage **-20°C**

Storage Buffer

PBS, 50% glycerol, 0.09% sodium azide

Shipping Temperature **Blue Ice or 4°C**

Certificate of Analysis

A 1:1000 dilution of SPC-684 was sufficient for detection of RAB1B in 15 µg of Human HeLa Cell Lysates by ECL immunoblot analysis using goat anti-rabbit IgG:HRP as the secondary antibody.

Cellular Localization

Cytoplasm | Membrane | Lipid-Anchor | Cytoplasmic Side | Preautophagosomal Structure
Membrane | Lipid-Anchor | Cytoplasmic Side

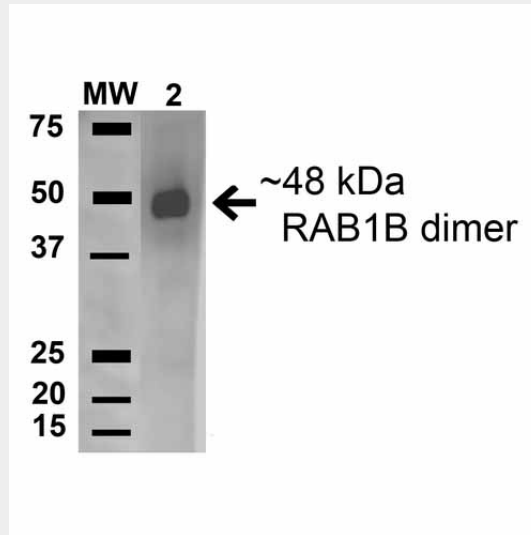
RAB1B Antibody - Protocols

Provided below are standard protocols that you may find useful for product applications.

- [Western Blot](#)
- [Blocking Peptides](#)
- [Dot Blot](#)
- [Immunohistochemistry](#)
- [Immunofluorescence](#)
- [Immunoprecipitation](#)

- [Flow Cytometry](#)
- [Cell Culture](#)

RAB1B Antibody - Images



Western blot analysis of Human HeLa and 293Trap cell lysates showing detection of 22.1 kDa RAB1B protein using Rabbit Anti-RAB1B Polyclonal Antibody (ASM10544). Lane 1: Molecular Weight Ladder (MW). Lane 2: Human HeLa and 293Trap cell lysates. Load: 15 μ g. Block: 5% Skim Milk in 1X TBST. Primary Antibody: Rabbit Anti-RAB1B Polyclonal Antibody (ASM10544) at 1:1000 for 1 hour at RT. Secondary Antibody: Goat Anti-Rabbit HRP at 1:2000 for 60 min at RT. Color Development: ECL solution for 6 min in RT. Predicted/Observed Size: 22.1 kDa.