

## Mitofusin 2 Antibody Catalog # ASM10543

### Specification

---

#### Mitofusin 2 Antibody - Product Information

|                   |                                |
|-------------------|--------------------------------|
| Application       | <b>WB</b>                      |
| Primary Accession | <a href="#">O95140</a>         |
| Other Accession   | <a href="#">NP_001121132.1</a> |
| Host              | <b>Rabbit</b>                  |
| Reactivity        | <b>Human</b>                   |
| Clonality         | <b>Polyclonal</b>              |

#### Description

Rabbit Anti-Human Mitofusin 2 Polyclonal

#### Target/Specificity

Detects 86.4 kDa.

#### Other Names

Transmembrane GTPase MFN2 Antibody, CPRP1 Antibody, MFN2 Antibody, Mitofusin-2 Antibody, EC:3.6.5.- Antibody, KIAA0214 Antibody

#### Immunogen

Synthetic peptide from the mid-protein of Human MFN2

#### Purification

Peptide Affinity Purified

Storage **-20°C**

#### Storage Buffer

PBS, 50% glycerol, 0.09% sodium azide

Shipping Temperature **Blue Ice or 4°C**

#### Certificate of Analysis

A 1:1000 dilution of SPC-683 was sufficient for detection of Mitofusin 2 in 15 µg of human 293Trap cell lysates by ECL immunoblot analysis using goat anti-rabbit IgG:HRP as the secondary antibody.

#### Cellular Localization

Mitochondrion Outer Membrane | Multi-Pass Membrane Protein

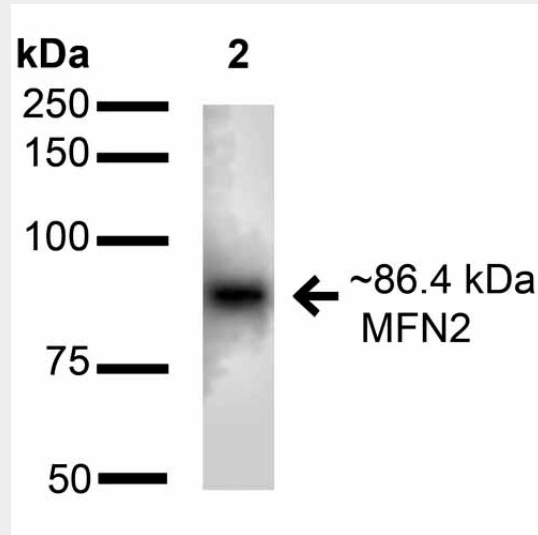
#### Mitofusin 2 Antibody - Protocols

Provided below are standard protocols that you may find useful for product applications.

- [Western Blot](#)
- [Blocking Peptides](#)
- [Dot Blot](#)
- [Immunohistochemistry](#)
- [Immunofluorescence](#)
- [Immunoprecipitation](#)

- [Flow Cytometry](#)
- [Cell Culture](#)

### Mitofusin 2 Antibody - Images



Western blot analysis of Human 293Trap cell lysates showing detection of ~86.4 kDa Mitofusin 2 Antibody protein using Rabbit Anti-Mitofusin 2 Antibody Polyclonal Antibody (ASM10543). Lane 1: Molecular Weight Ladder (MW). Lane 2: Human 293Trap cell lysates. Load: 15  $\mu$ g. Block: 2% BSA and 2% Skim Milk in 1X TBST. Primary Antibody: Rabbit Anti-Mitofusin 2 Antibody Polyclonal Antibody (ASM10543) at 1:1000 for 16 hours at 4°C. Secondary Antibody: Goat Anti-Rabbit IgG: HRP at 1:2000 for 60 min at RT. Color Development: ECL solution for 6 min at RT. Predicted/Observed Size: ~86.4 kDa.