

PIK3R4 Antibody
Catalog # ASM10532

Specification

PIK3R4 Antibody - Product Information

Application	WB
Primary Accession	Q99570
Other Accession	NP_055417.1
Host	Rabbit
Reactivity	Human, Rat
Clonality	Polyclonal

Description

Rabbit Anti-Human PIK3R4 Polyclonal

Target/Specificity

Detects ~160 kDa.

Other Names

VPS15 Antibody, Phosphoinositide 3-kinase regulatory subunit 4 Antibody, PI3-kinase regulatory subunit 4 Antibody, PI3-kinase p150 subunit Antibody, PIK3R4 Antibody, Phosphoinositide 3-kinase adaptor protein Antibody

Immunogen

Synthetic peptide from the C-terminal of Human PIK3R4 (aa. 1314-1325)

Purification

Peptide Affinity Purified

Storage **-20°C**

Storage Buffer

PBS, 50% glycerol, 0.09% sodium azide

Shipping Temperature **Blue Ice or 4°C**

Certificate of Analysis

A 1:1000 dilution of SPC-660 was sufficient for detection of PIK3R4 in 15 µg of Rat Brain Lysates by ECL immunoblot analysis using goat anti-rabbit IgG:HRP as the secondary antibody.

Cellular Localization

Late Endosome | Cytoplasmic Vesicle | Autophagosome | Membrane | Lipid-Anchor

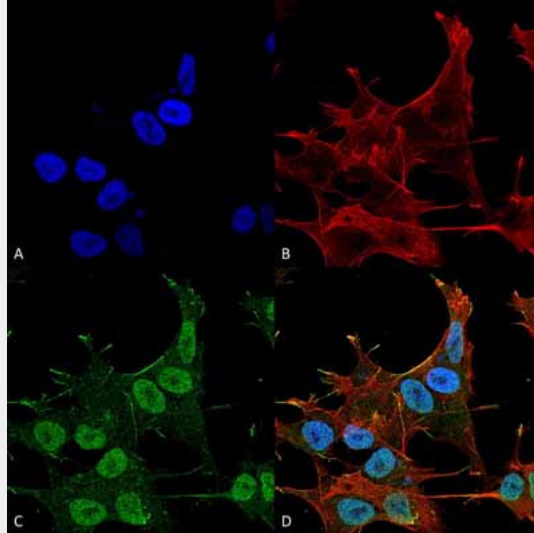
PIK3R4 Antibody - Protocols

Provided below are standard protocols that you may find useful for product applications.

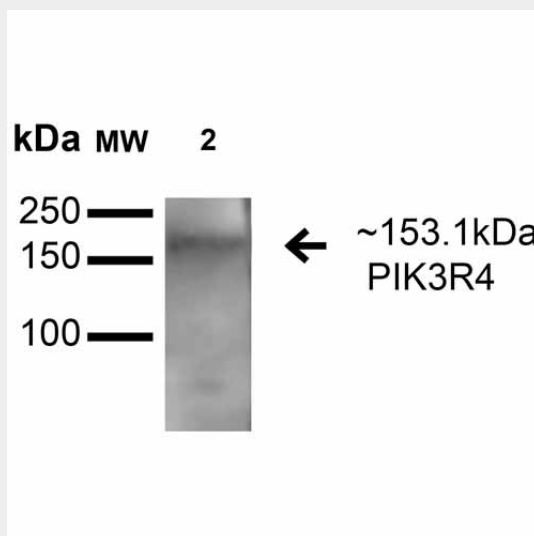
- [Western Blot](#)
- [Blocking Peptides](#)
- [Dot Blot](#)
- [Immunohistochemistry](#)
- [Immunofluorescence](#)

- [Immunoprecipitation](#)
- [Flow Cytometry](#)
- [Cell Culture](#)

PIK3R4 Antibody - Images



Immunocytochemistry/Immunofluorescence analysis using Rabbit Anti-PIK3R4 Polyclonal Antibody (ASM10532). Tissue: Neuroblastoma cell line (SK-N-BE). Species: Human. Fixation: 4% Formaldehyde for 15 min at RT. Primary Antibody: Rabbit Anti-PIK3R4 Polyclonal Antibody (ASM10532) at 1:100 for 60 min at RT. Secondary Antibody: Goat Anti-Mouse ATTO 488 at 1:200 for 60 min at RT. Counterstain: Phalloidin Texas Red F-Actin stain; DAPI (blue) nuclear stain at 1:1000, 1:5000 for 60 min at RT, 5 min at RT. Localization: Endosome, Cytoplasmic Vesicle, Autophagosome, Membrane, Lipid-Anchor. Magnification: 60X. (A) DAPI (blue) nuclear stain (B) Phalloidin Texas Red F-Actin stain (C) PIK3R4 Antibody (D) Composite.



Western blot analysis of Rat Brain cell lysates showing detection of 153.1 kDa PIK3R4 protein using Rabbit Anti-PIK3R4 Polyclonal Antibody (ASM10532). Lane 1: Molecular Weight Ladder (MW). Lane 2: Rat Brain cell lysates. Load: 15 μ g. Block: 5% Skim Milk in 1X TBST. Primary Antibody: Rabbit Anti-PIK3R4 Polyclonal Antibody (ASM10532) at 1:1000 for 1 hour at RT. Secondary Antibody: Goat Anti-Rabbit HRP at 1:2000 for 60 min at RT. Color Development: ECL solution for 6 min in RT. Predicted/Observed Size: 153.1 kDa.