

**Bcl-2 Antibody**  
Catalog # ASM10529

**Specification**

---

**Bcl-2 Antibody - Product Information**

Application	<b>WB</b>
Primary Accession	<a href="#">P10415</a>
Other Accession	<a href="#">NP_000624.2</a>
Host	<b>Rabbit</b>
Reactivity	<b>Human, Rat</b>
Clonality	<b>Polyclonal</b>

**Description**

Rabbit Anti-Human Bcl-2 Polyclonal

**Target/Specificity**

Detects ~26 kDa.

**Other Names**

Protein phosphatase 1 regulatory subunit 50 Antibody, AW986256 Antibody, BCL2\_HUMAN Antibody, Bcl2 Antibody, Apoptosis regulator Bcl2 Antibody, BCL2 Antibody, B cell leukemia/lymphoma 2 Antibody, Leukemia/lymphoma, B-cell, 2 Antibody, B cell CLL/lymphoma 2 Antibody, Bcl-2 Antibody, Oncogene B-cell leukemia 2 Antibody, D830018M01Rik Antibody, PPP1R50 Antibody, D630044D05Rik Antibody, Apoptosis regulator Bcl-2 Antibody, C430015F12Rik Antibody

**Immunogen**

Synthetic peptide from the mid-protein of Human Bcl-2

**Purification**

Peptide Affinity Purified

Storage **-20°C**

**Storage Buffer**

PBS, 50% glycerol, 0.09% sodium azide

Shipping Temperature **Blue Ice or 4°C**

**Certificate of Analysis**

A 1:1000 dilution of SPC-655 was sufficient for detection of Bcl-2 in 15 µg of human 293Trap cell lysates by ECL immunoblot analysis using goat anti-rabbit IgG:HRP as the secondary antibody.

**Cellular Localization**

Mitochondrion Outer Membrane | Single-Pass Membrane Protein | Nucleus Membrane | Single-Pass Membrane Protein | Endoplasmic Reticulum Membrane | Single-Pass Membrane Protein

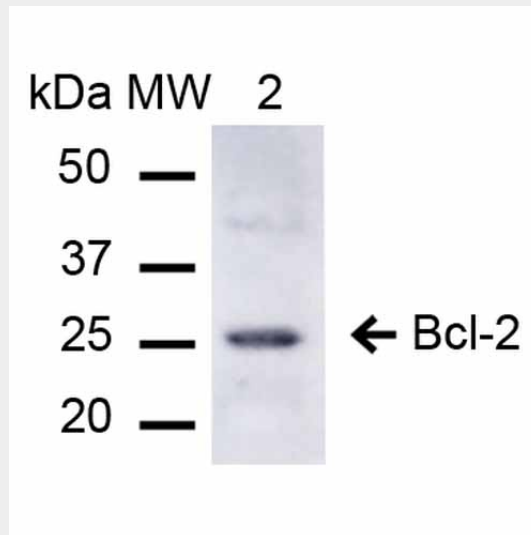
**Bcl-2 Antibody - Protocols**

Provided below are standard protocols that you may find useful for product applications.

- [Western Blot](#)

- [Blocking Peptides](#)
- [Dot Blot](#)
- [Immunohistochemistry](#)
- [Immunofluorescence](#)
- [Immunoprecipitation](#)
- [Flow Cytometry](#)
- [Cell Culture](#)

### Bcl-2 Antibody - Images



Western blot analysis of Human 293Trap showing detection of ~26.3 kDa Bcl-2 protein using Rabbit Anti-Bcl-2 Polyclonal Antibody (ASM10529). Lane 1: Molecular Weight Ladder (MW). Lane 2: 293Trap cell lysates. Load: 15 µg. Block: 5% Skim Milk in 1X TBST. Primary Antibody: Rabbit Anti-Bcl-2 Polyclonal Antibody (ASM10529) at 1:1000 for 2 hours at RT. Secondary Antibody: Goat Anti-Rabbit IgG: HRP at 1:1000 for 60 min at RT. Color Development: ECL solution for 6 min in RT. Predicted/Observed Size: ~26.3 kDa.