

**WIPI2 Antibody**  
Catalog # ASM10525

**Specification**

---

**WIPI2 Antibody - Product Information**

Application	<b>WB</b>
Primary Accession	<a href="#">Q9Y4P8</a>
Other Accession	<a href="#">NP_001028690.1</a>
Host	<b>Rabbit</b>
Reactivity	<b>Human</b>
Clonality	<b>Polyclonal</b>

**Description**

Rabbit Anti-Human WIPI2 Polyclonal

**Target/Specificity**

Detects ~55 kDa.

**Other Names**

WIPI2 Antibody, WD repeat domain phosphoinositide-interacting protein 2 Antibody, WIPI-2 Antibody, WIPI49-like protein 2 Antibody, CGI-50 Antibody, ATG21 Antibody, WIPI 2 Antibody, ATG18B Antibody

**Immunogen**

Synthetic peptide from the C-terminal of Human WIPI2

**Purification**

Peptide Affinity Purified

Storage **-20°C**

**Storage Buffer**

PBS, 50% glycerol, 0.09% sodium azide

Shipping Temperature **Blue Ice or 4°C**

**Certificate of Analysis**

A 1:1000 dilution of SPC-649 was sufficient for detection of WIPI2 in 15 µg of human HeLa cell lysates by ECL immunoblot analysis using goat anti-rabbit IgG:HRP as the secondary antibody.

**Cellular Localization**

Preautophagosomal Structure Membrane | Peripheral Membrane Protein | Cytoplasmic Side

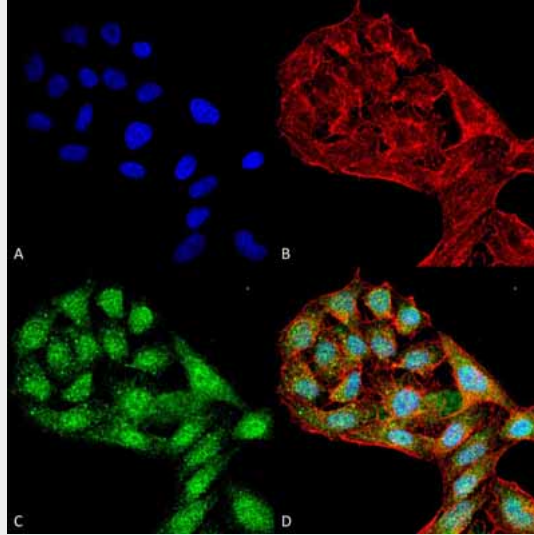
**WIPI2 Antibody - Protocols**

Provided below are standard protocols that you may find useful for product applications.

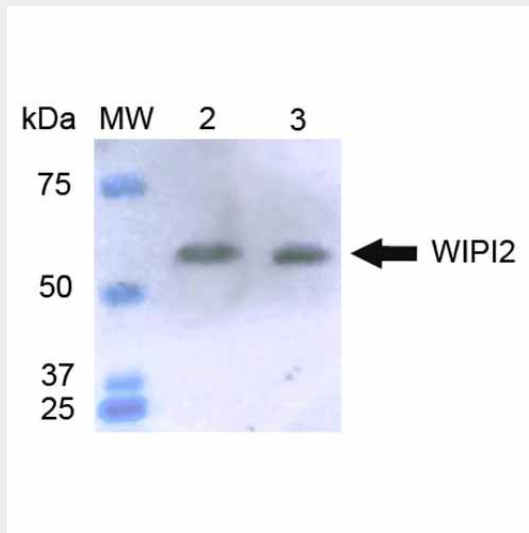
- [Western Blot](#)
- [Blocking Peptides](#)
- [Dot Blot](#)
- [Immunohistochemistry](#)
- [Immunofluorescence](#)

- [Immunoprecipitation](#)
- [Flow Cytometry](#)
- [Cell Culture](#)

**WIPI2 Antibody - Images**



Immunocytochemistry/Immunofluorescence analysis using Rabbit Anti-WIPI2 Polyclonal Antibody (ASM10525). Tissue: HeLa Cells (Human Cervical Cancer). Species: Human. Fixation: 4% Formaldehyde for 15 min at RT. Primary Antibody: Rabbit Anti-WIPI2 Polyclonal Antibody (ASM10525) at 1:100 for 60 min at RT. Secondary Antibody: Goat Anti-Rabbit ATTO 488 at 1:200 for 60 min at RT. Counterstain: Phalloidin Texas Red F-Actin stain; DAPI (blue) nuclear stain at 1:1000, 1:5000 for 60 min at RT, 5 min at RT. Localization: Cytoplasm . Magnification: 60X. (A) DAPI (blue) nuclear stain (B) Phalloidin Texas Red F-Actin stain (C) WIPI2 Antibody (D) Composite.



Western blot analysis of Human HeLa and 293Trap cell lysates showing detection of ~49.4 kDa WIPI2 protein using Rabbit Anti-WIPI2 Polyclonal Antibody (ASM10525). Lane 1: Molecular Weight Ladder (MW). Lane 2: HeLa cell lysates. Lane 3: 293Trap cell lysates. Load: 15 µg. Block: 5% Skim Milk in 1X TBST. Primary Antibody: Rabbit Anti-WIPI2 Polyclonal Antibody (ASM10525) at 1:1000 for 2 hours at RT. Secondary Antibody: Goat Anti-Rabbit IgG: HRP at 1:1000 for 60 min at RT. Color Development: ECL solution for 6 min in RT. Predicted/Observed Size: ~49.4 kDa.