

## GABARAPL2 Antibody

Catalog # ASM10507

### Specification

---

#### GABARAPL2 Antibody - Product Information

Application	<b>WB</b>
Primary Accession	<a href="#">P60520</a>
Other Accession	<a href="#">NP_009216.1</a>
Host	<b>Rabbit</b>
Reactivity	<b>Human, Rat</b>
Clonality	<b>Polyclonal</b>

#### Description

Rabbit Anti-Human GABARAPL2 Polyclonal

#### Target/Specificity

Detects ~14 kDa.

#### Other Names

ATG8 Antibody, FLC3A Antibody, General protein transport factor p16 Antibody, GEF-2 Antibody, GABARAPL2 Antibody, GBRL2\_HUMAN Antibody, GEF2 Antibody, GABA(A) receptor-associated protein-like 2 Antibody, MAP1 light chain 3-related protein Antibody, Golgi-associated ATPase enhancer of 16 kDa Antibody, Gabarapl2 Antibody, GATE-16 Antibody, Gamma-aminobutyric acid receptor-associated protein-like 2 Antibody, Ganglioside expression factor 2 Antibody, ATG8C Antibody, GATE16 Antibody

#### Immunogen

Synthetic peptide from the C-terminal of Human GABARAPL2

#### Purification

Peptide Affinity Purified

Storage **-20°C**

#### Storage Buffer

PBS, 50% glycerol, 0.09% sodium azide

Shipping Temperature **Blue Ice or 4°C**

#### Certificate of Analysis

A 1:1000 dilution of SPC-624 was sufficient for detection of GABARAPL2 in 15 µg of rat liver cell lysates by ECL immunoblot analysis using goat anti-rabbit IgG:HRP as the secondary antibody.

#### Cellular Localization

Golgi Apparatus | Cytoplasmic Vesicle | Autophagosome

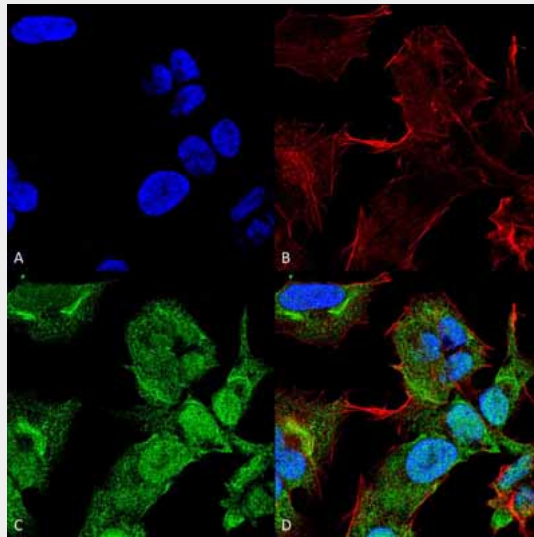
#### GABARAPL2 Antibody - Protocols

Provided below are standard protocols that you may find useful for product applications.

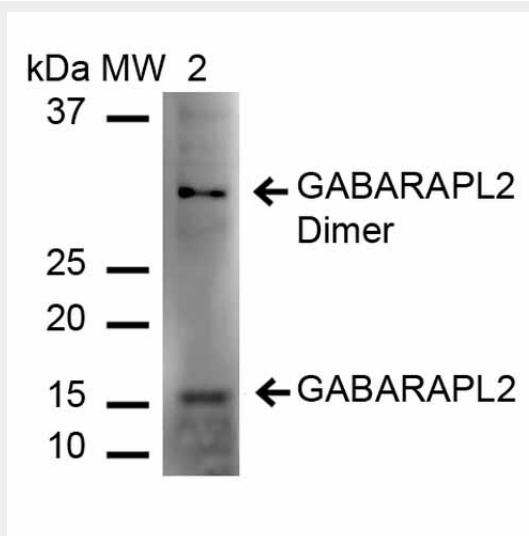
- [Western Blot](#)
- [Blocking Peptides](#)

- [Dot Blot](#)
- [Immunohistochemistry](#)
- [Immunofluorescence](#)
- [Immunoprecipitation](#)
- [Flow Cytometry](#)
- [Cell Culture](#)

### GABARAPL2 Antibody - Images



Immunocytochemistry/Immunofluorescence analysis using Rabbit Anti-GABARAPL2 Polyclonal Antibody (ASM10507). Tissue: Neuroblastoma cell line (SK-N-BE). Species: Human. Fixation: 4% Formaldehyde for 15 min at RT. Primary Antibody: Rabbit Anti-GABARAPL2 Polyclonal Antibody (ASM10507) at 1:100 for 60 min at RT. Secondary Antibody: Goat Anti-Rabbit ATTO 488 at 1:100 for 60 min at RT. Counterstain: Phalloidin Texas Red F-Actin stain; DAPI (blue) nuclear stain at 1:1000, 1:5000 for 60 min at RT, 5 min at RT. Localization: Cytoplasmic Vesicle, Autophagosome. Magnification: 60X. (A) DAPI nuclear stain. (B) Phalloidin Texas Red F-Actin stain. (C) GABARAPL2 Antibody. (D) Composite.



Western blot analysis of Rat Liver cell lysates showing detection of ~14 kDa GABARAPL2 protein using Rabbit Anti-GABARAPL2 Polyclonal Antibody (ASM10507). Lane 1: Molecular Weight Ladder (MW). Lane 2: Rat Liver cell lysates. Load: 15 µg. Block: 5% Skim Milk in 1X TBST. Primary

Antibody: Rabbit Anti-GABARAPL2 Polyclonal Antibody (ASM10507) at 1:1000 for 60 min at RT.  
Secondary Antibody: Goat Anti-Rabbit IgG: HRP at 1:2000 for 60 min at RT. Color Development:  
ECL solution for 6 min in RT. Predicted/Observed Size: ~14 kDa.