

**GABARAP Antibody**  
Catalog # ASM10504

**Specification**

---

**GABARAP Antibody - Product Information**

Application	<b>WB</b>
Primary Accession	<a href="#">O95166</a>
Other Accession	<a href="#">NP_009209.1</a>
Host	<b>Rabbit</b>
Reactivity	<b>Human</b>
Clonality	<b>Polyclonal</b>

**Description**

Rabbit Anti-Human GABARAP Polyclonal

**Target/Specificity**

Detects ~14-16kDa. Other observed bands at ~40kDa which is a complex, and ~26kDa which is a dimer.

**Other Names**

ATG8A Antibody, GABARAP A Antibody, GABA(A) Receptor Associated Protein Antibody, MM46 Antibody

**Immunogen**

Synthetic peptide from the C-terminal of human GABARAP

**Purification**

Peptide Affinity Purified

Storage **-20°C**

**Storage Buffer**

PBS, 50% glycerol, 0.09% sodium azide

Shipping Temperature **Blue Ice or 4°C**

**Certificate of Analysis**

A 1:1000 dilution of SPC-621 was sufficient for detection of GABARAP on mouse kidney lysates using Goat anti-rabbit IgG:HRP as the secondary antibody.

**Cellular Localization**

Endomembrane System | Cytoplasm | Cytoskeleton | Golgi Apparatus | Golgi Apparatus Membrane | Cytoplasmic Vesicle

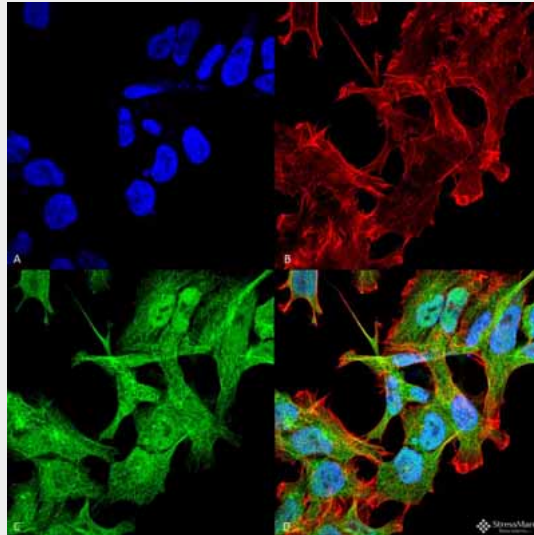
**GABARAP Antibody - Protocols**

Provided below are standard protocols that you may find useful for product applications.

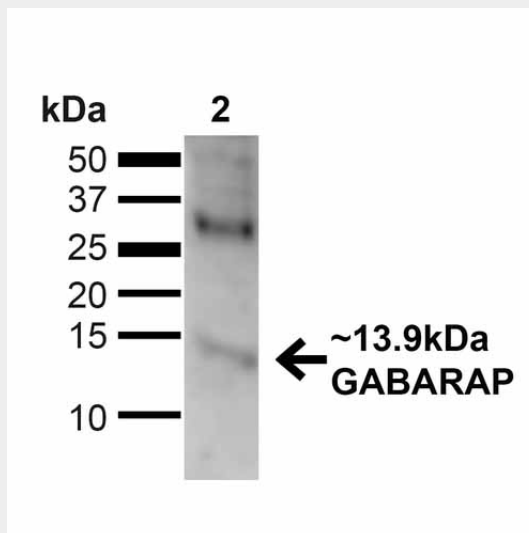
- [Western Blot](#)
- [Blocking Peptides](#)
- [Dot Blot](#)
- [Immunohistochemistry](#)

- [Immunofluorescence](#)
- [Immunoprecipitation](#)
- [Flow Cytometry](#)
- [Cell Culture](#)

**GABARAP Antibody - Images**

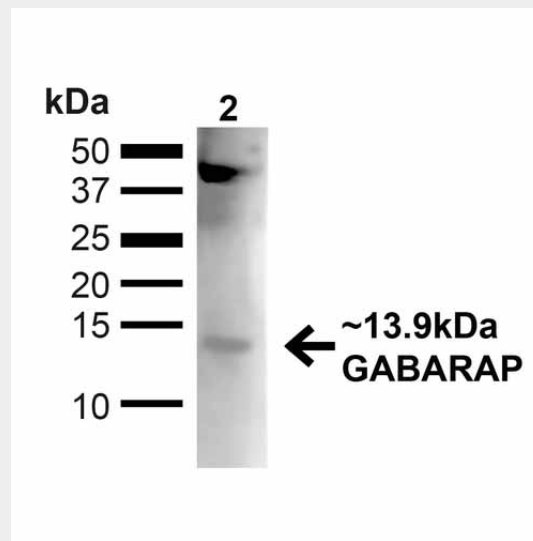


Immunocytochemistry/Immunofluorescence analysis using Rabbit Anti-GABARAP Polyclonal Antibody (ASM10504). Tissue: Neuroblastoma cell line (SK-N-BE). Species: Human. Fixation: 4% Formaldehyde for 15 min at RT. Primary Antibody: Rabbit Anti-GABARAP Polyclonal Antibody (ASM10504) at 1:100 for 60 min at RT. Secondary Antibody: Goat Anti-Rabbit ATTO 488 at 1:100 for 60 min at RT. Counterstain: Phalloidin Texas Red F-Actin stain; DAPI (blue) nuclear stain at 1:1000, 1:5000 for 60min RT, 5min RT. Localization: Endomembrane System, Cytoplasm, Cytoskeleton, Golgi Apparatus Membrane, Cytoplasmic Vesicle. Magnification: 60X. (A) DAPI (blue) nuclear stain (B) Phalloidin Texas Red F-Actin stain (C) GABARAP Antibody (D) Composite.



Western blot analysis of Human 293T showing detection of ~13.9kDa GABARAP protein using Rabbit Anti-GABARAP Polyclonal Antibody (ASM10504). Lane 1: MW Ladder. Lane 2: Human 293T (20 µg). Load: 20 µg. Block: 5% milk + TBST for 1 hour at RT. Primary Antibody: Rabbit Anti-GABARAP Polyclonal Antibody (ASM10504) at 1:1000 for 1 hour at RT. Secondary Antibody: Goat Anti-Rabbit: HRP at 1:2000 for 1 hour at RT. Color Development: TMB solution for 12 min at

RT. Predicted/Observed Size: ~13.9kDa. Other Band(s): ~40kDa (potential trimer).



Western blot analysis of Mouse Kidney showing detection of ~13.9kDa GABARAP protein using Rabbit Anti-GABARAP Polyclonal Antibody (ASM10504). Lane 1: MW Ladder. Lane 2: Mouse Kidney (20  $\mu$ g). Load: 20  $\mu$ g. Block: 5% milk + TBST for 1 hour at RT. Primary Antibody: Rabbit Anti-GABARAP Polyclonal Antibody (ASM10504) at 1:1000 for 1 hour at RT. Secondary Antibody: Goat Anti-Rabbit: HRP at 1:2000 for 1 hour at RT. Color Development: TMB solution for 12 min at RT. Predicted/Observed Size: ~13.9kDa. Other Band(s): ~40kDa (potential trimer).

#### **GABARAP Antibody - Background**

Gamma-aminobutyric acid receptor-associated protein, or GABARAP, are ligand gated chloride channels that mediate inhibitory neurotransmission. It clusters neurotransmitter receptors by mediating its interaction with the cytoskeleton (1).

#### **GABARAP Antibody - References**

1. "Entrez Gene: GABARAP GABA(A) receptor-associated protein".