

**Aquaporin 3 Antibody**  
Catalog # ASM10485**Specification**

---

**Aquaporin 3 Antibody - Product Information**

|                   |                             |
|-------------------|-----------------------------|
| Application       | <b>IHC, WB</b>              |
| Primary Accession | <a href="#">P47862</a>      |
| Other Accession   | <a href="#">NP_113891.1</a> |
| Host              | <b>Rabbit</b>               |
| Reactivity        | <b>Human, Mouse, Rat</b>    |
| Clonality         | <b>Polyclonal</b>           |

**Description**

Rabbit Anti-Rat Aquaporin 3 Polyclonal

**Target/Specificity**

Detects ~31.5kDa. May detect larger glycosylated bands ~35-50kDa.

**Other Names**

AQP3 Antibody, AQP 3 Antibody, AQP-3 Antibody, Aqp3 Antibody, AQP3\_HUMAN Antibody, Aquaglyceroporin-3 Antibody, Aquaporin 3 (GIL blood group) Antibody, Aquaporin 3 (Gill blood group) Antibody, Aquaporin-3 Antibody, Aquaporin3 Antibody, GIL Antibody, Gill blood group Antibody

**Immunogen**

Produced against the C-terminal peptide (Sequence N-CHLEQPPPSTEAEENVKLAHMKHKEQI) of rat aquaporin 3

**Purification**

Protein A Purified

Storage **-20°C****Storage Buffer**

PBS, 50% glycerol, 0.09% sodium azide

Shipping Temperature

**Blue Ice or 4°C****Certificate of Analysis**

0.5 µg/ml of SPC-504 was sufficient for detection of aquaporin 3 in 10 µg of rat kidney tissue lysate by colorimetric immunoblot analysis using Goat anti-rabbit IgG:HRP as the secondary antibody.

**Cellular Localization**

Membrane

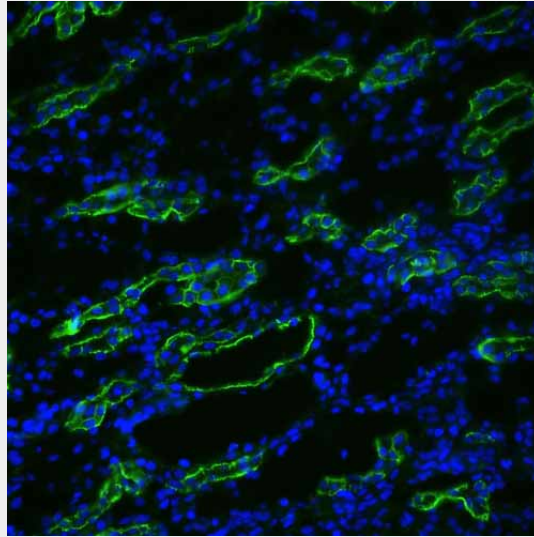
**Aquaporin 3 Antibody - Protocols**

Provided below are standard protocols that you may find useful for product applications.

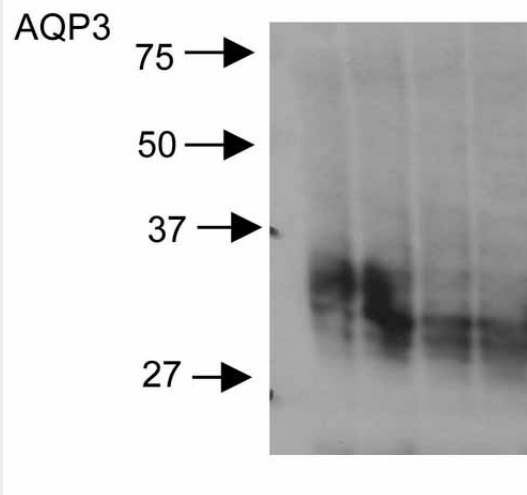
- [Western Blot](#)
- [Blocking Peptides](#)
- [Dot Blot](#)

- [Immunohistochemistry](#)
- [Immunofluorescence](#)
- [Immunoprecipitation](#)
- [Flow Cytometry](#)
- [Cell Culture](#)

### Aquaporin 3 Antibody - Images



Immunohistochemistry analysis using Rabbit Anti-Aquaporin 3 Polyclonal Antibody (ASM10485). Tissue: kidney tissue. Species: Rat. Primary Antibody: Rabbit Anti-Aquaporin 3 Polyclonal Antibody (ASM10485) at 1:200. Secondary Antibody: FITC Goat Anti-Rabbit (green).



Western blot analysis of Rat kidney inner medullary homogenates showing detection of Aquaporin 3 protein using Rabbit Anti-Aquaporin 3 Polyclonal Antibody (ASM10485). Primary Antibody: Rabbit Anti-Aquaporin 3 Polyclonal Antibody (ASM10485) at 1:2000.

### Aquaporin 3 Antibody - Background

Aquaporins selectively conduct water molecules in and out of the cell, while preventing the passage of ions and other solutes. Known as water channels, they are integral membrane pore proteins (1, 2). Aquaporin 3 is found in the basolateral cell membrane of principal collecting duct cells and provide a pathway for water to exit these cells (3). AQP3 gene expression is not regulated

by vasopressin (4).

### **Aquaporin 3 Antibody - References**

1. Gonen T., Walz T. (2006) Q. Rev. Biophys. 39(4): 361-396.
2. Knepper M.A. (1994) Proc Natl. Acad Sci. USA. 91(14): 6255-6258.
3. Sasaki S., Ishibashi K., and Marumo F. (1998) Annu Rev Physiol. 60: 199-220.
4. Dibas A.I., Mia A.J., Yorio T. (1998) Proc Soc Exp Med. 219(3): 183-199.