

**BIM/BOD (IN2) Antibody**  
Catalog # ASM10416**Specification**

---

**BIM/BOD (IN2) Antibody - Product Information**

|                   |                             |
|-------------------|-----------------------------|
| Application       | <b>WB</b>                   |
| Primary Accession | <a href="#">O43521</a>      |
| Other Accession   | <a href="#">NP_619527.1</a> |
| Host              | <b>Rabbit</b>               |
| Reactivity        | <b>Human, Mouse, Rat</b>    |
| Clonality         | <b>Polyclonal</b>           |

**Description**

Rabbit Anti-Human BIM/BOD (IN2) Polyclonal

**Target/Specificity**

Detects ~23kDa.

**Other Names**

BCL2 like protein 11 Antibody, Bcl2 interacting mediator of cell death Antibody, Bcl2 interacting protein Bim Antibody, BCL2 like 11 Antibody, BAM Antibody, BimE1 Antibody, BimL Antibody, BOD Antibody, BIM beta 6 Antibody, BIM Beta7 Antibody, BIM alpha 3 Antibody, BIM alpha4 Antibody, BIM alpha5 Antibody, BIM alpha6 Antibody

**Immunogen**

Internal central amino acids of human Bim

**Purification**

Protein A Purified

Storage **-20°C****Storage Buffer**

PBS, 50% glycerol, 0.09% sodium azide

Shipping Temperature **Blue Ice or 4°C****Certificate of Analysis**

2.5 µg/ml of SPC-164 was sufficient for detection of Bim in 20 µg of K562 cell lysate by colorimetric immunoblot analysis using Goat anti-rabbit IgG:HRP as the secondary antibody.

**Cellular Localization**

Mitochondrion | Endomembrane System

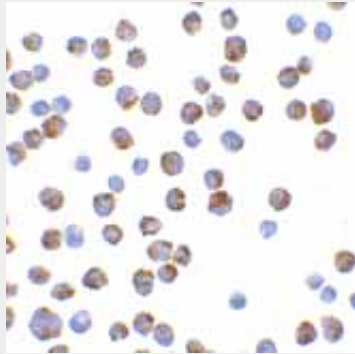
**BIM/BOD (IN2) Antibody - Protocols**

Provided below are standard protocols that you may find useful for product applications.

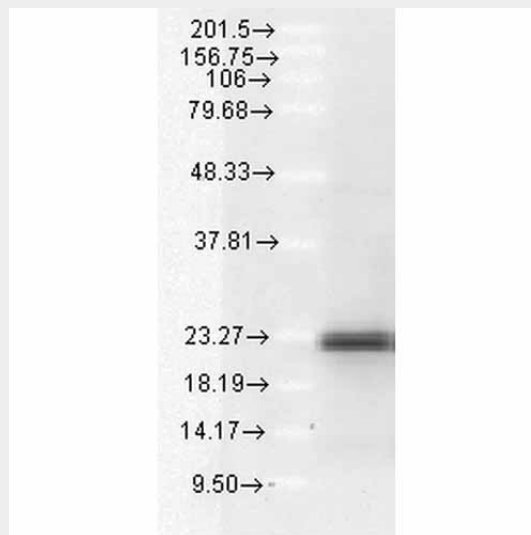
- [Western Blot](#)
- [Blocking Peptides](#)
- [Dot Blot](#)
- [Immunohistochemistry](#)

- [Immunofluorescence](#)
- [Immunoprecipitation](#)
- [Flow Cytometry](#)
- [Cell Culture](#)

### **BIM/BOD (IN2) Antibody - Images**



Immunocytochemistry/Immunofluorescence analysis using Rabbit Anti-BIM Polyclonal Antibody (ASM10416). Tissue: K562 cells. Species: Human. Primary Antibody: Rabbit Anti-BIM Polyclonal Antibody (ASM10416) at 1:100.



Western blot analysis of Human A549 cell lysates showing detection of BIM protein using Rabbit Anti-BIM Polyclonal Antibody (ASM10416). Load: 15  $\mu$ g protein. Block: 1.5% BSA for 30 minutes at RT. Primary Antibody: Rabbit Anti-BIM Polyclonal Antibody (ASM10416) at 1:1000 for 2 hours at RT. Secondary Antibody: Donkey Anti-Rabbit IgG: HRP for 1 hour at RT.

### **BIM/BOD (IN2) Antibody - Background**

Members in the Bcl-2 family are critical regulators of apoptosis by either inhibiting or promoting cell death. Bim/BOD is a group of three splice variants, BimEL, BimL and BimS, with apparent molecular masses of ~23, 16, and 13 kDa, respectively. Bcl-2 homology 3 (BH3) domain is a potent death domain. BH3 domain containing pro-apoptotic proteins, including Bad, Bax, Bid, Bik, and Hrk, form a growing subclass of the Bcl-2 family. A novel BH3 domain containing protein was recently identified and designated Bim or BOD in human, mouse and rat (1,2). Bim/BOD interacts with diverse members in the pro-survival Bcl-2 sub-family including Bcl-2, Bcl-xL and Bcl-w. Bim/BOD induces apoptosis. The messenger RNA of Bim is ubiquitously expressed in multiple tissues and cell lines (1,2).

**BIM/BOD (IN2) Antibody - References**

1. O'Connor L., Strasser A., O'Reilly L.A., et al. (1998) EMBO J. 17:384-395.
2. Hsu S.Y., Lin P., and Hsueh A.J. (1998) Mol. Endocrinol. 12:1432-40.