

VGLUT2 Antibody
VGLUT2 Antibody, Clone S29-29
Catalog # ASM10229

Specification

VGLUT2 Antibody - Product Information

Application	WB
Primary Accession	O9JI12
Other Accession	NP_445879.1
Host	Mouse
Isotype	IgG1
Reactivity	Human, Mouse, Rat
Clonality	Monoclonal

Description

Mouse Anti-Rat VGLUT2 Monoclonal IgG1

Target/Specificity

Detects ~60kDa.

Other Names

Differentiation associated BNPI Antibody, DNPI Antibody, SLC17A6 Antibody, Solute carrier family 17 member 6 Antibody, Vesicular glutamate transporter 2 Antibody, Differentiation associated Na dependent inorganic phosphate cotransporter Antibody, Solute carrier family 17 (Sodium dependent inorganic phosphate cotransporter) member 6 Antibody, Differentiation associated Na(+) dependent inorganic phosphate cotransporter Antibody, Differentiation-associated Na(+)-dependent inorganic phosphate cotransporter Antibody, Sodium dependent inorganic phosphate cotransporter Antibody

Immunogen

Fusion protein amino acids 501-582 (cytoplasmic C-terminus) of rat VGlut2

Purification

Protein G Purified

Storage **-20°C**

Storage Buffer

PBS pH7.4, 50% glycerol, 0.09% sodium azide

Shipping Temperature **Blue Ice or 4°C**

Certificate of Analysis

1 µg/ml of SMC-395 was sufficient for detection of VGLut2 in 20 µg of rat brain lysate by colorimetric immunoblot analysis using goat anti-mouse IgG:HRP as the secondary antibody.

Cellular Localization

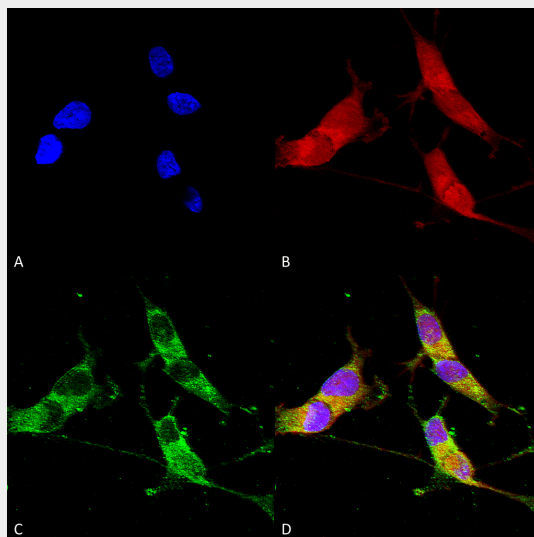
Cytoplasmic Vesicle | Secretory Vesicle | Synaptic Vesicle Membrane | Membrane | Cell Junction | Synapse

VGLUT2 Antibody - Protocols

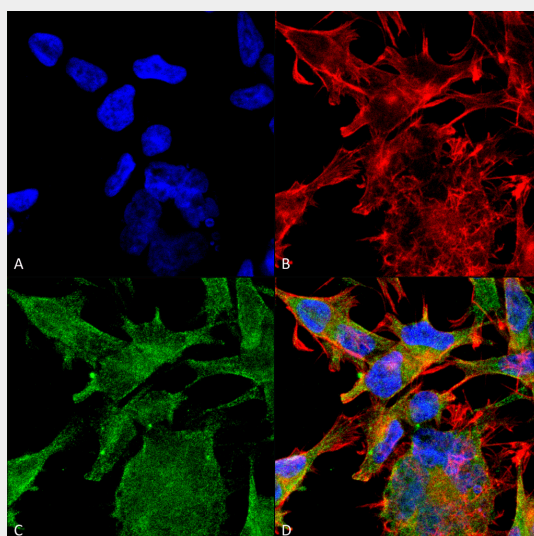
Provided below are standard protocols that you may find useful for product applications.

- [Western Blot](#)
- [Blocking Peptides](#)
- [Dot Blot](#)
- [Immunohistochemistry](#)
- [Immunofluorescence](#)
- [Immunoprecipitation](#)
- [Flow Cytometry](#)
- [Cell Culture](#)

VGLUT2 Antibody - Images

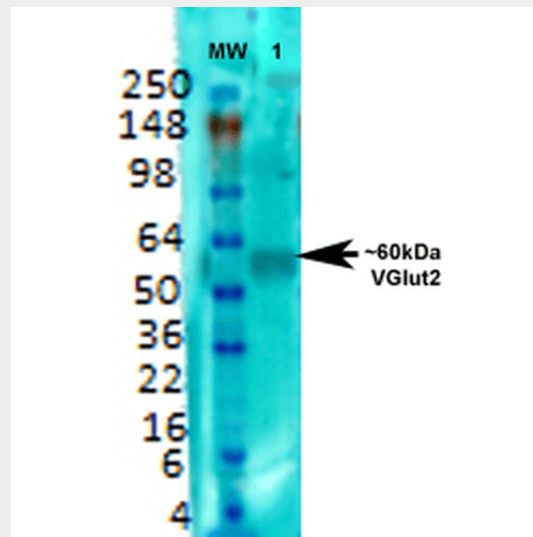


Immunocytochemistry/Immunofluorescence analysis using Mouse Anti-VGLUT2 Monoclonal Antibody, Clone N29/29 (ASM10229). Tissue: Neuroblastoma cells (SH-SY5Y). Species: Human. Fixation: 4% PFA for 15 min. Primary Antibody: Mouse Anti-VGLUT2 Monoclonal Antibody (ASM10229) at 1:50 for overnight at 4°C with slow rocking. Secondary Antibody: AlexaFluor 488 at 1:1000 for 1 hour at RT. Counterstain: Phalloidin-iFluor 647 (red) F-Actin stain; Hoechst (blue) nuclear stain at 1:800, 1.6mM for 20 min at RT. (A) Hoechst (blue) nuclear stain. (B) Phalloidin-iFluor 647 (red) F-Actin stain. (C) VGLUT2 Antibody (D) Composite.



Immunocytochemistry/Immunofluorescence analysis using Mouse Anti-VGLUT2 Monoclonal Antibody, Clone N29/29 (ASM10229). Tissue: Neuroblastoma cell line (SK-N-BE). Species: Human.

Fixation: 4% Formaldehyde for 15 min at RT. Primary Antibody: Mouse Anti-VGLUT2 Monoclonal Antibody (ASM10229) at 1:100 for 60 min at RT. Secondary Antibody: Goat Anti-Mouse ATTO 488 at 1:200 for 60 min at RT. Counterstain: Phalloidin Texas Red F-Actin stain; DAPI (blue) nuclear stain at 1:1000, 1:5000 for 60 min at RT, 5 min at RT. Localization: Cytoplasmic Vesicle, Secretory Vesicle, Synaptic Vesicle Membrane, Membrane, Cell Junction, Synapse. Magnification: 60X. (A) DAPI (blue) nuclear stain. (B) Phalloidin Texas Red F-Actin stain. (C) VGLUT2 Antibody. (D) Composite.



Western Blot analysis of Rat brain membrane lysate showing detection of VGLUT2 protein using Mouse Anti-VGLUT2 Monoclonal Antibody, Clone N29/29 (ASM10229). Primary Antibody: Mouse Anti-VGLUT2 Monoclonal Antibody (ASM10229) at 1:000.

VGLUT2 Antibody - Background

The ATP-dependent, chloride-sensitive vesicular glutamate transporters (VGLUT) include BNPI (VGLUT1), VGLUT2 (DNPI) and VGLUT3. The brain expresses BNPI (brain specific Na⁺-dependent inorganic phosphate (Pi) cotransporter) and VGLUT2 in a complementary fashion. The telencephalic regions express BNPI, whereas the lower brainstem and diencephalic regions express VGLUT2. Rat pinealocytes express both BNPI and VGLUT2. The striatum, hippocampus, cerebral cortex and raphe nuclei express VGLUT3 in a small number of neurons. Pancreatic α and β cells express BNPI and VGLUT2 in response to glucose concentrations. Human VGLUT3 shares a 72% sequence homology with VGLUT2 and BNPI.

VGLUT2 Antibody - References

1. Aihara Y., et al. (2000) *J Neurochem.* 74: 2622-2625.
2. Kaneko T., and Fujiyama F. (2002) *Neurosci Res.* 42: 243-250.
3. Gras C., et al. (2002) *J Neurosci.* 22: 5442-5451.
4. Takamori S., Malherbe P., Broger C., and Jahn R. (2002) *EMBO Rep.* 3: 798-803.
5. Morimoto R., Hayashi M., Yatsushiro S., Otsuka M., Yamamoto A., and Moriyama Y. (2003) *J Neurochem.* 84: 382-391.
6. Bai L., Zhang X., and Ghishan F.K. (2003) *Am. J. Physiol. Gastrointest. Liver Physiol.* 284: G808-814.