

**HSP47 Antibody**  
**HSP47 Antibody, Clone 1C4-1A6**  
**Catalog # ASM10150**

**Specification**

---

**HSP47 Antibody - Product Information**

Application	<b>WB</b>
Primary Accession	<a href="#">P50454.2</a>
Other Accession	<a href="#">NP_001193943</a>
Host	<b>Mouse</b>
Isotype	<b>IgG1 Kappa</b>
Reactivity	<b>Human</b>
Clonality	<b>Monoclonal</b>

**Description**

Mouse Anti-Human HSP47 Monoclonal IgG1 Kappa

**Target/Specificity**

Detects 47kDa.

**Other Names**

SerpinH1 Antibody, Colligin Antibody, Gp46 Antibody, serine proteinase inhibitor Antibody, cysteine proteinase inhibitor Antibody, collagen binding protein Antibody

**Immunogen**

Human HSP47, full length

**Purification**

Protein G Purified

Storage **-20°C**

**Storage Buffer**

PBS pH7.4, 50% glycerol, 0.09% sodium azide

Shipping Temperature **Blue Ice or 4°C**

**Certificate of Analysis**

1 µg/ml of SMC-203 was sufficient for detection of HSP47 in 20 µg of heat shocked HeLa cell lysate by colorimetric immunoblot analysis using Goat anti-mouse IgG:HRP as the secondary antibody.

**Cellular Localization**

Endoplasmic Reticulum | Endoplasmic Reticulum Lumen

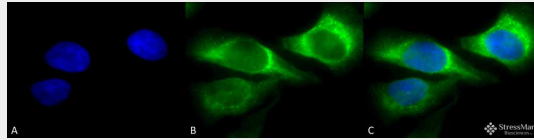
**HSP47 Antibody - Protocols**

Provided below are standard protocols that you may find useful for product applications.

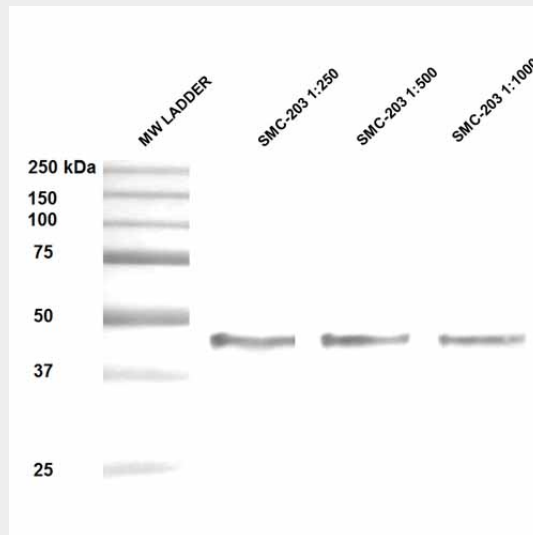
- [Western Blot](#)
- [Blocking Peptides](#)
- [Dot Blot](#)
- [Immunohistochemistry](#)

- [Immunofluorescence](#)
- [Immunoprecipitation](#)
- [Flow Cytometry](#)
- [Cell Culture](#)

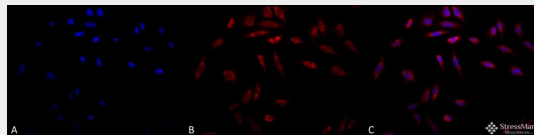
### HSP47 Antibody - Images



Immunocytochemistry/Immunofluorescence analysis using Mouse Anti-Hsp47 Monoclonal Antibody, Clone 1C4-1A6 (ASM10150). Tissue: Heat Shocked HeLa Cells. Species: Human. Fixation: 2% Formaldehyde for 20 min at RT. Primary Antibody: Mouse Anti-Hsp47 Monoclonal Antibody (ASM10150) at 1:100 for 12 hours at 4°C. Secondary Antibody: FITC Goat Anti-Mouse (green) at 1:200 for 2 hours at RT. Counterstain: DAPI (blue) nuclear stain at 1:40000 for 2 hours at RT. Localization: Endoplasmic reticulum lumen. Cytoplasm. Magnification: 100x. (A) DAPI (blue) nuclear stain. (B) Anti-Hsp47 Antibody. (C) Composite.



Western Blot analysis of Human Epithelial cell (A431) lysates showing detection of ~47 kDa Hsp47 protein using Mouse Anti-Hsp47 Monoclonal Antibody, Clone 1C4-1A6 (ASM10150). Lane 1: MW ladder. Lane 2: Anti-Hsp47 (1:250). Lane 3: Anti-Hsp47 (1:500). Lane 4: Anti-Hsp47 (1:1000). Load: 20 µg. Block: 5% milk + TBST for 1 hour at RT. Primary Antibody: Mouse Anti-Hsp47 Monoclonal Antibody (ASM10150) at 1:250 - 1:1000 for 1 hour at RT. Secondary Antibody: HRP Goat Anti-Mouse at 1:50 for 1 hour at RT. Color Development: TMB solution for 10 min at RT. Predicted/Observed Size: ~47 kDa.



Immunocytochemistry/Immunofluorescence analysis using Mouse Anti-Hsp47 Monoclonal Antibody, Clone 1C4-1A6 (ASM10150). Tissue: Heat Shocked HeLa Cells. Species: Human. Fixation: 2% Formaldehyde for 20 min at RT. Primary Antibody: Mouse Anti-Hsp47 Monoclonal Antibody (ASM10150) at 1:100 for 12 hours at 4°C. Secondary Antibody: APC Goat Anti-Mouse (red) at 1:200 for 2 hours at RT. Counterstain: DAPI (blue) nuclear stain at 1:40000 for 2 hours at RT. Localization: Endoplasmic reticulum lumen. Cytoplasm. Magnification: 20x. (A) DAPI (blue)

nuclear stain. (B) Anti-Hsp47 Antibody. (C) Composite.

### **HSP47 Antibody - Background**

HSP47 is a chaperone protein, member of the superfamily of serine proteinase inhibitors. Also known as SERPINH1, a serine proteinase inhibitor. It is a stress protein that resides in the endoplasmic reticulum, has an active role on the intracellular process of folding, assembly and secretion of pro-collagens. Recent studies have shown the association of an increased expression of HSP47 around fibrotic lesions (1).

The identification of a novel biomarker on cell therapies aimed to reduce the progression of fibrotic diseases, could be used potentially as a universal marker, since HSP47 binds a single substrate (2). Type I collagen is fundamental during the healing process after a myocardial infarction. It is critical in the position of collagen-produced cells and the assembly of collagen fibrils (3).

### **HSP47 Antibody - References**

1. Razzaque MS., Taguchi T., (1999) *Histol Histopathol.* 14 (4): 1999-212.
2. Taguchi T., et al. (2011) *Acta Histochem Cytochem.* 44(2):35-41.
3. Nong Z., et al. (2011) *Am J Pathol.* 197(5): 2189-96.