

Trap1 Antibody
TRAP1 Antibody, Clone Trap1-6
Catalog # ASM10141**Specification**

Trap1 Antibody - Product Information

Application	WB
Primary Accession	O12931
Other Accession	NP_057376.2
Host	Mouse
Isotype	IgG2a Kappa
Reactivity	Human
Clonality	Monoclonal

Description

Mouse Anti-Human Trap1 Monoclonal IgG2a Kappa

Target/Specificity

Detects ~75kDa.

Other Names

Heat shock protein 75 Antibody, Heat shock protein 75 kDa Antibody, Heat shock protein 75 kDa mitochondrial Antibody, HSP 75 Antibody, HSP 90L Antibody, HSP75 Antibody, HSP90L Antibody, mitochondrial Antibody, TNF receptor associated protein 1 Antibody, TNFR associated protein 1 Antibody, TNFR-associated protein 1 Antibody, TRAP 1 Antibody, TRAP-1 Antibody, Trap1 Antibody, TRAP1_HUMAN Antibody, Tumor necrosis factor receptor associated protein Antibody, Tumor necrosis factor type 1 receptor associated protein Antibody, Tumor necrosis factor type 1 receptor-associated protein Antibody

Immunogen

Purified recombinant TRAP1

Purification

Protein G Purified

Storage**-20°C****Storage Buffer**

PBS pH7.4, 50% glycerol, 0.09% sodium azide

Shipping Temperature**Blue Ice or 4°C****Certificate of Analysis**

1 µg/ml of SMC-193 was sufficient for detection of Trap-1/HSP75 in 20 µg of Hela Cell lysate by ECL immunoblot analysis using Goat anti-mouse IgG:HRP as the secondary antibody.

Cellular Localization

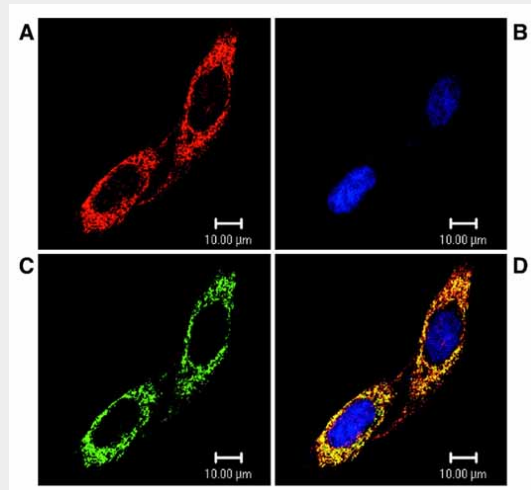
Mitochondrion

Trap1 Antibody - Protocols

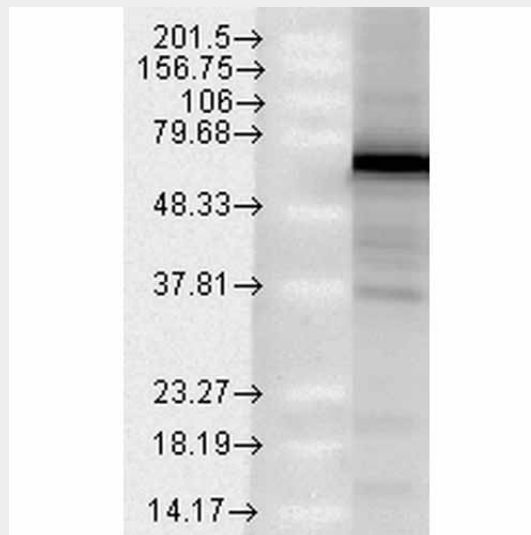
Provided below are standard protocols that you may find useful for product applications.

- [Western Blot](#)
- [Blocking Peptides](#)
- [Dot Blot](#)
- [Immunohistochemistry](#)
- [Immunofluorescence](#)
- [Immunoprecipitation](#)
- [Flow Cytometry](#)
- [Cell Culture](#)

Trap1 Antibody - Images



Immunocytochemistry/Immunofluorescence analysis using Mouse Anti-Trap1 Monoclonal Antibody, Clone Trap1-6 (ASM10141). Tissue: PC3M cells. Species: Human. Primary Antibody: Mouse Anti-Trap1 Monoclonal Antibody (ASM10141) at 1:1000. Secondary Antibody: FITC Goat Anti-Mouse (green). Counterstain: Mitotracker (red) mitochondria stain. DAPI (blue) nuclear stain.



Western Blot analysis of Human Heat Shocked HeLa cell lysates showing detection of Trap1 protein using Mouse Anti-Trap1 Monoclonal Antibody, Clone Trap1-6 (ASM10141). Load: 15 μg. Block: 1.5% BSA for 30 minutes at RT. Primary Antibody: Mouse Anti-Trap1 Monoclonal Antibody (ASM10141) at 1:1000 for 2 hours at RT. Secondary Antibody: Sheep Anti-Mouse IgG: HRP for 1 hour at RT.

Trap1 Antibody - Background

The 90 kDa heat shock protein (HSP90) family of proteins that play an important physiological role. HSP90 is involved in numerous cellular processes but is best known for its association with signal transduction machinery. A recently cloned homolog of HSP90 is the tumor necrosis factor receptor-associated protein (TRAP1). Like HSP90, TRAP1 is found to be associated with numerous proteins involved in diverse actions (1, 2). Immunofluorescence data has shown TRAP1 to be localized in the mitochondria of mammalian cells. This observation and the fact that TRAP1 is shown to have a mitochondrial targeting pre-sequence strongly implicates TRAP1 as a mitochondrial matrix protein (3).

Trap1 Antibody - References

1. Felts S.J., et al. (2000) J Biol Chem. 275(5): 3305-3312.
2. Costantino E., et al. (2009) Cancer Lett. 279(1): 39-46.
3. Cechetto J.D., Gupta R.S. (2000) Exp Cell Res. 260(1): 30-39.